

Science-Based Approaches and Tools for Targeting Chesapeake Resources



Scott Phillips, John Wolf, and Ken Hyer
USGS



LGAC Meeting
June 2022



Targeting Resources: Benefits to People, Wildlife, and Habitats

Current Approach

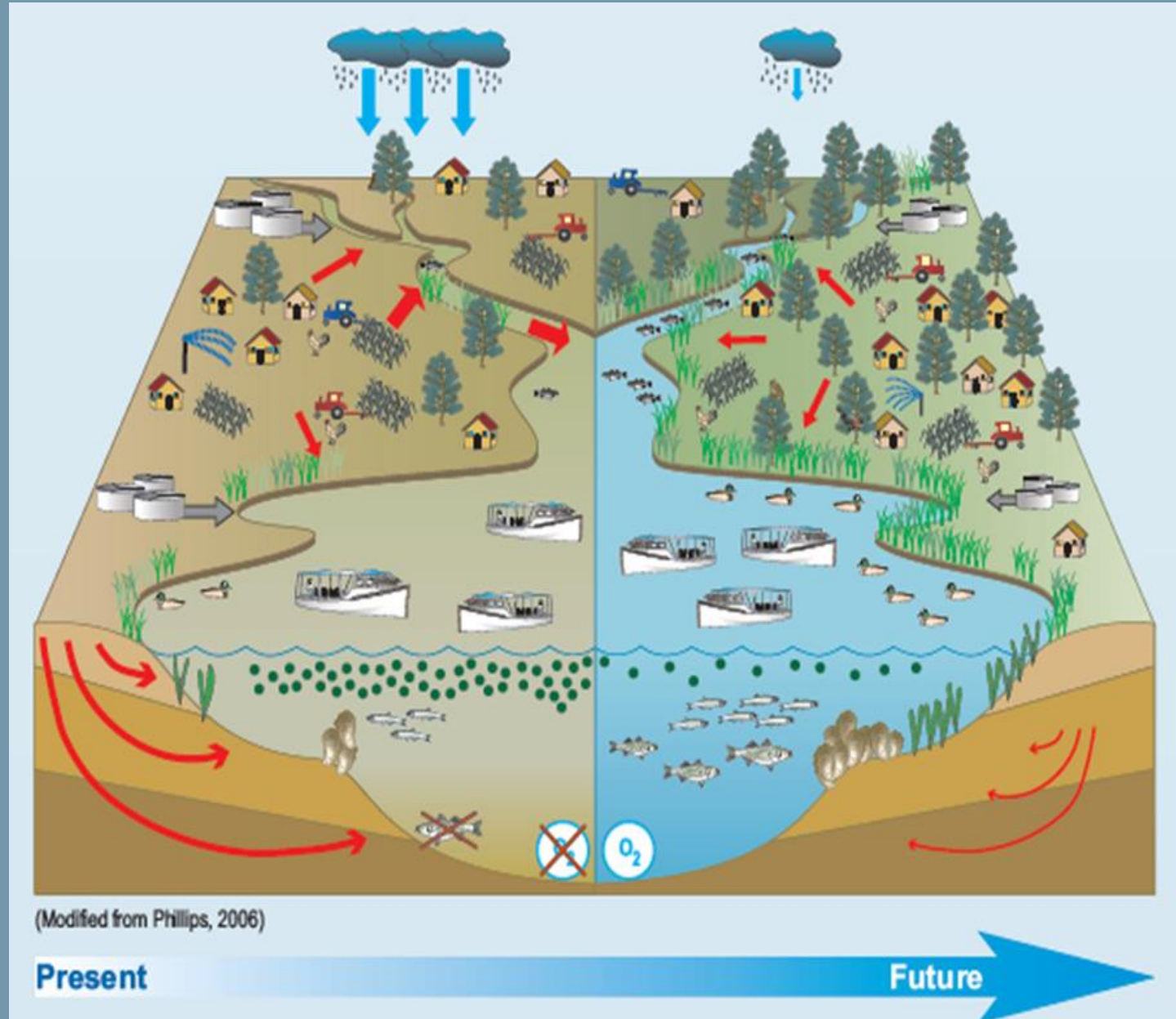
- Nutrient and sediment reduction
- TMDL: behind schedule for 2025
- WQ standards: slow improvements

Increase emphasis on people, wildlife, and habitats

- More return on WQ investments
- Achieve multiple CBP outcomes
- Promote local benefits

Targeting

- Places
- Programs
- Web Hub

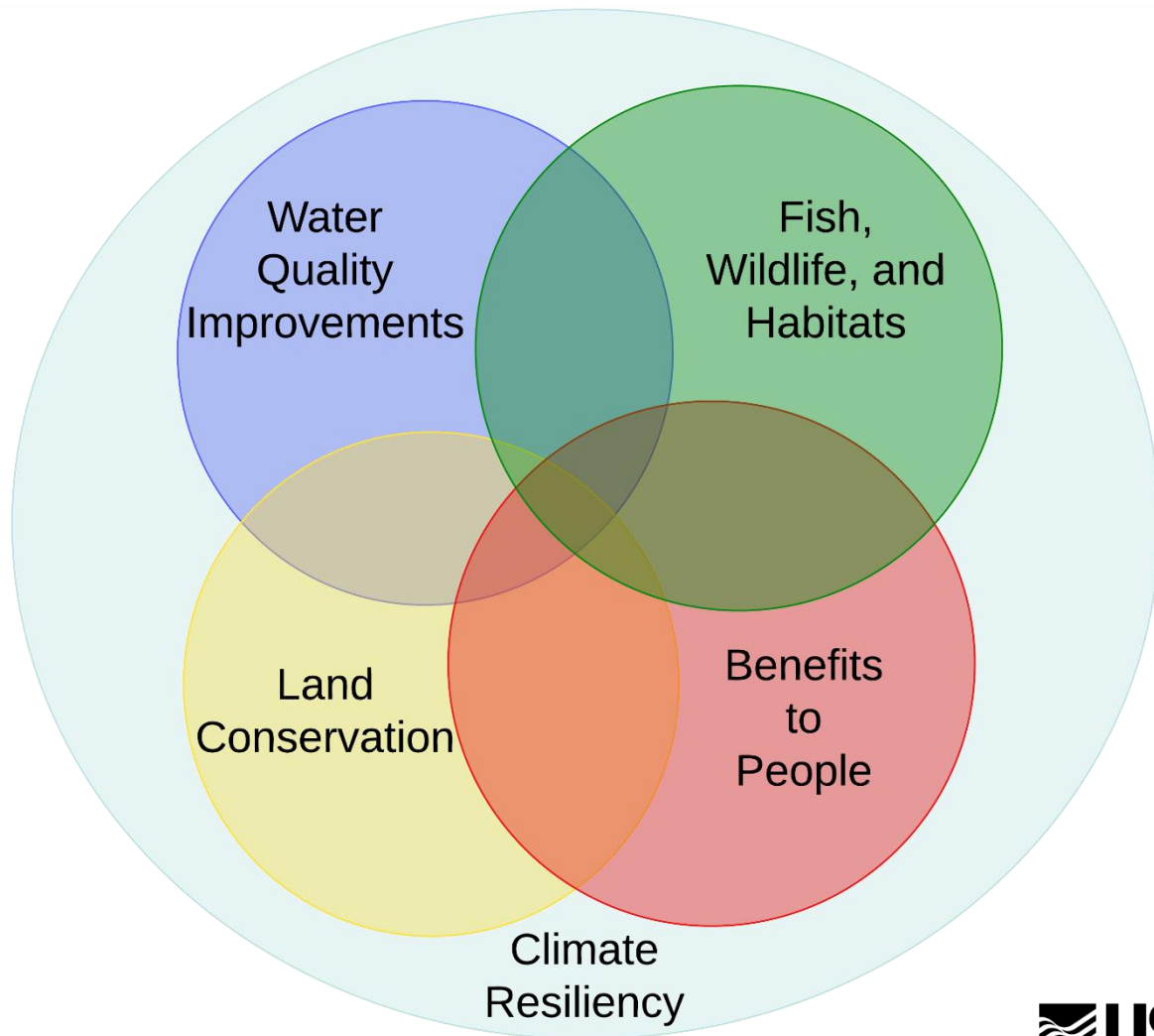


Now is the Time for Targeting Resources

- Accelerate progress to meet 2025 deadlines:
 - Water-quality practices
 - Lagging CBP outcomes
 - More emphases on climate resiliency and diversity
- Funding Opportunities
 - \$1.2B federal and state funding
 - Infrastructure Law: 5 years of increased federal funding
 - State programs
 - NGOs and private capital
- Growing interest from stakeholders
 - Federal and state agencies, CBC, local governments, NGOs
 - Expand their tools



Science Approach for Targeting Resources

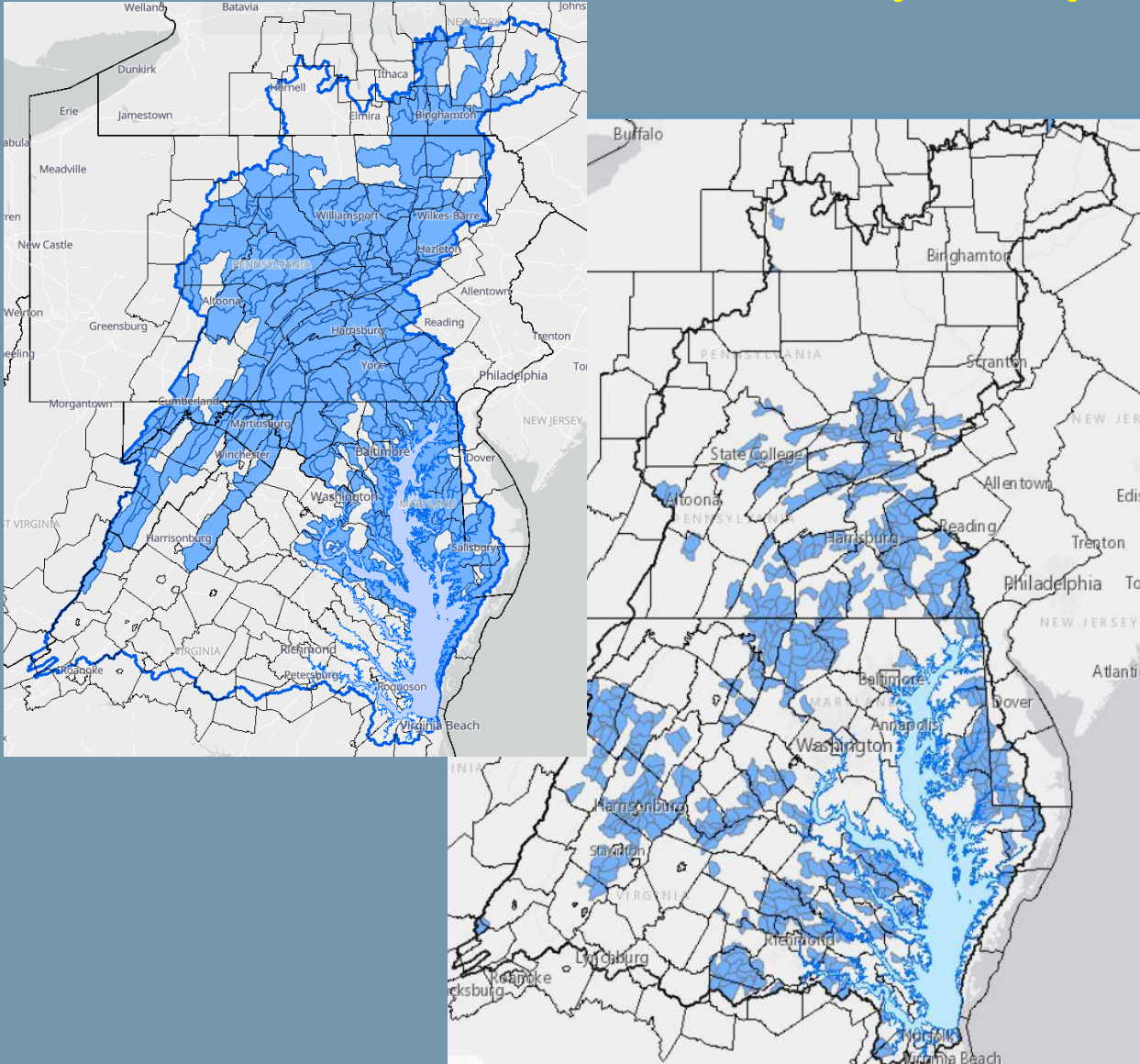


- Organize around topics:
 - Water-quality improvements
 - Fish, wildlife, and habitat
 - Land conservation
 - Benefits to people
 - Improve climate resiliency
- Strive for multiple benefits
- Build from existing tools & stakeholder programs
- USGS, EPA, Chesapeake Conservancy, & NOAA

Need

- Accelerate implementation
- Tidal waters improvements
- Local WQ benefits
- Address other CBP outcomes
- Increase climate resiliency and DEIJ

Water-Quality Improvements



Existing Tools

- Most effective basins
- Ag priority watersheds
- Watershed dashboard
- CAST

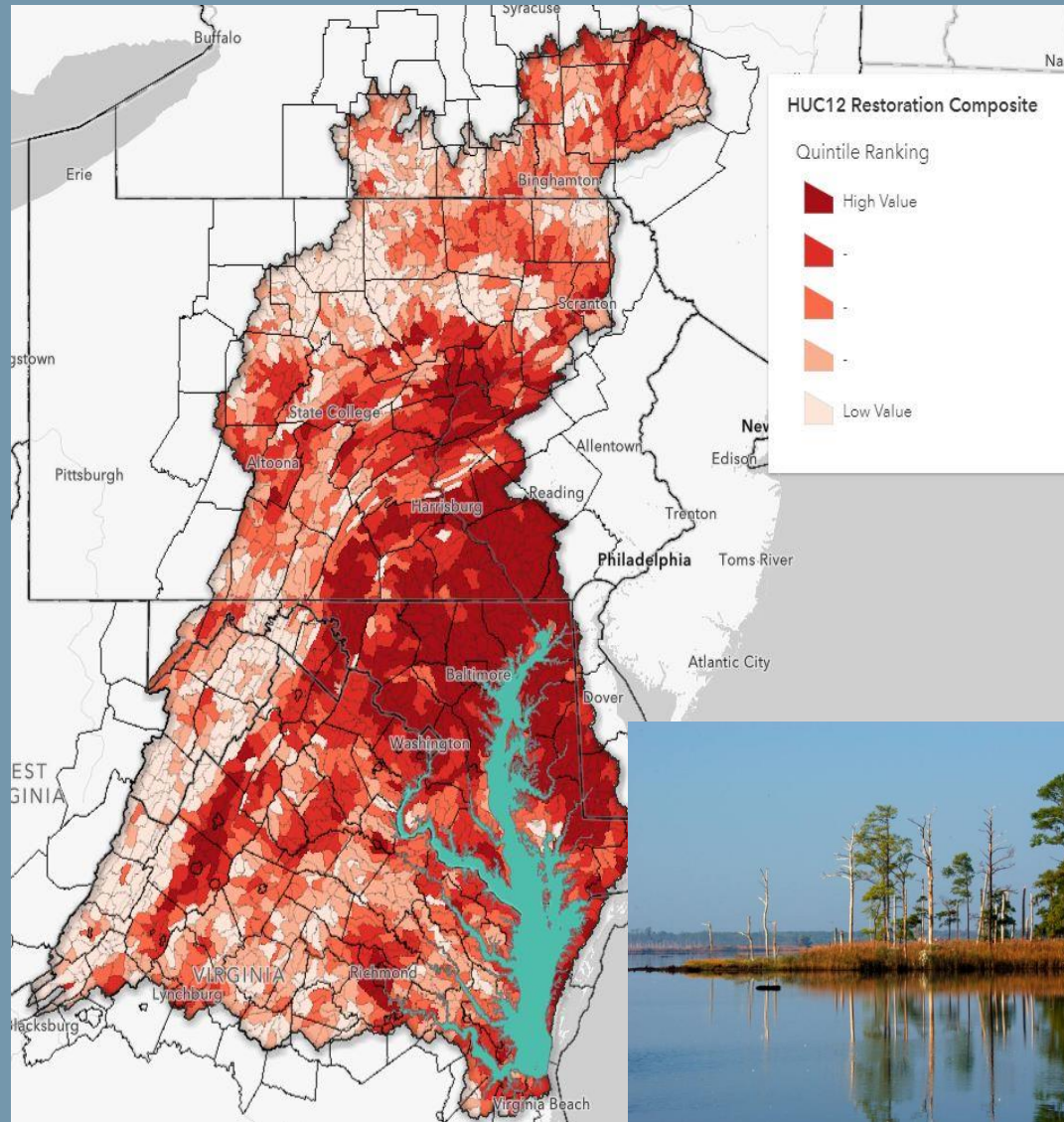
Opportunities

- Local WQ improvement on ag lands
- Tidal waters for fisheries
- Ecosystem services of BMPs
- Benefit other CBP outcomes

Fish, Wildlife, and Habitat

Needs

- Accelerate buffers and wetlands
- Connect WQ, habitat, and fisheries
- More habitat information



Existing Tools

- NFWF tools
- Cross-Outcome Mapping

Opportunities

- Enhanced information
 - Watershed conditions
 - Vulnerability of coasts



Chesapeake WILD and other grant programs

Land Conservation

Need

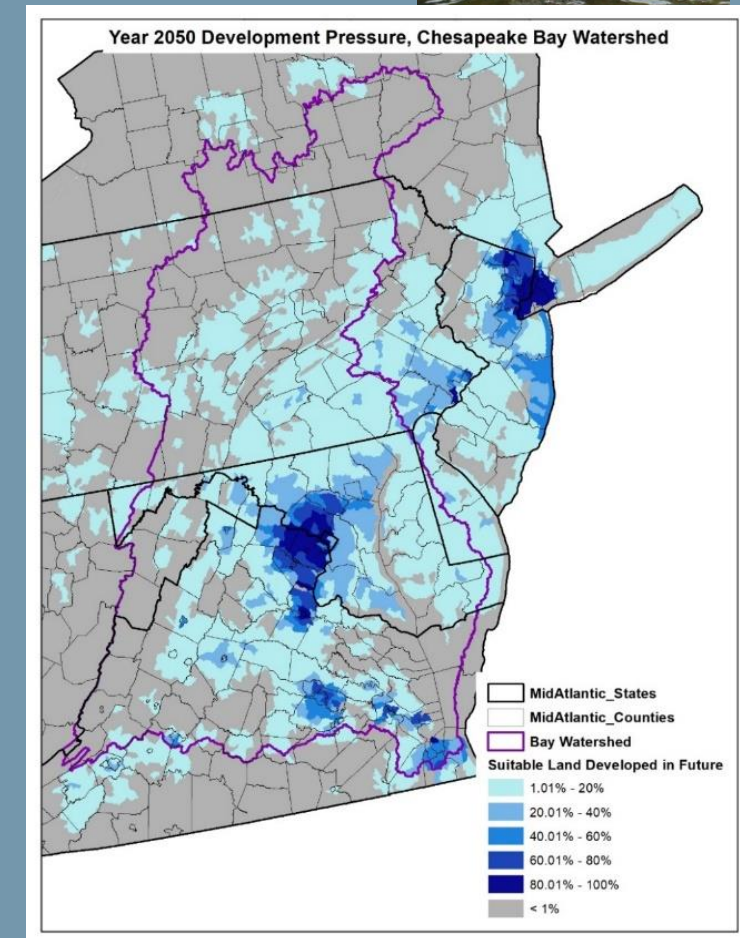
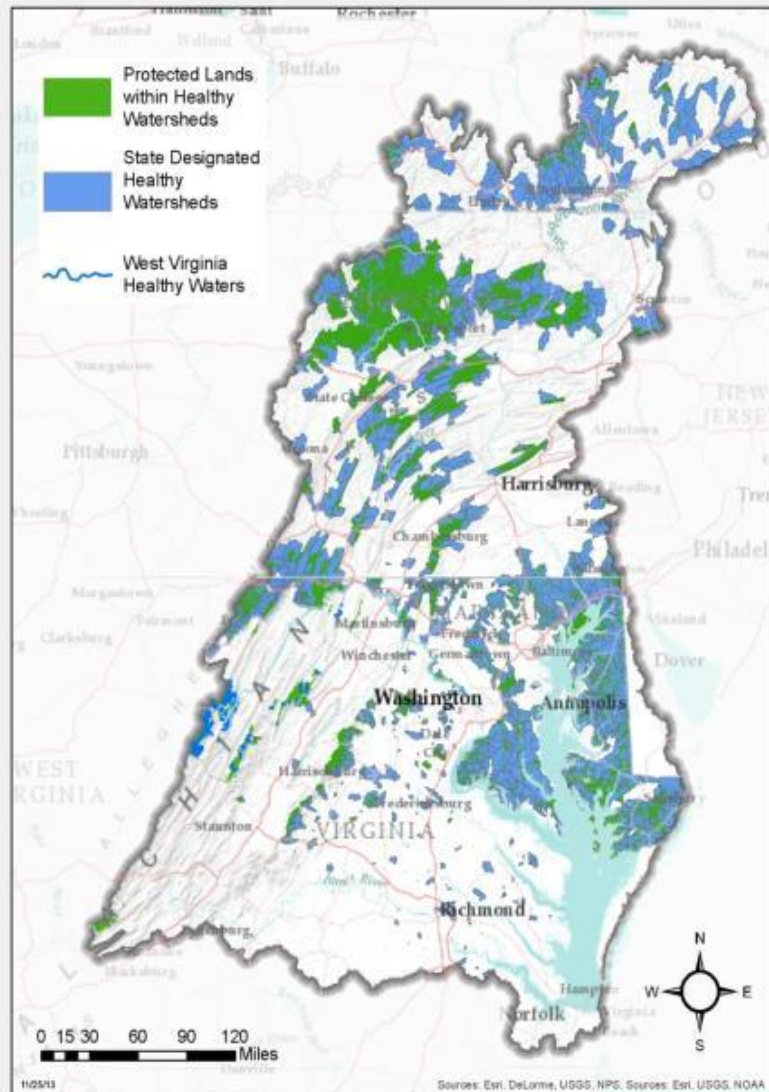
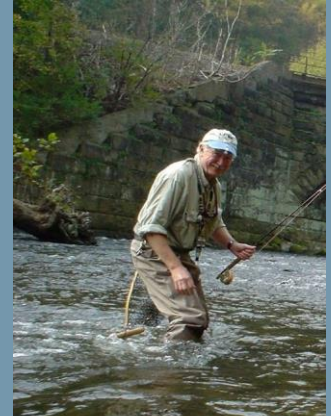
- Increase land protection
- Support local decisions

Existing Tools

- CCP Conservation Atlas
- Healthy Watershed Assessment
- Land-change model

Opportunities

- High-resolution land data
- Forecast vulnerability to development and climate



Benefits to People

Need

- Increase stewardship & public access
- Focus on underserved communities
- Benefits to local govts

Existing Tools

- Conservation Atlas
- Chesapeake Diversity Dashboard

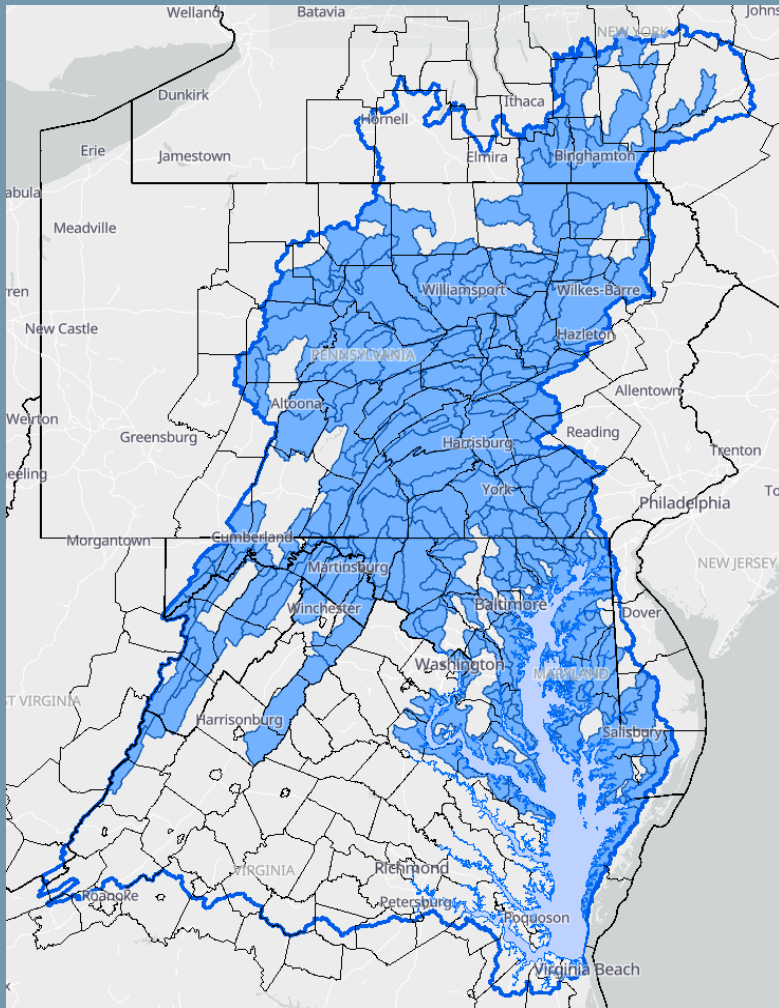
Opportunities

- Climate resiliency
- Programs for multiple benefits

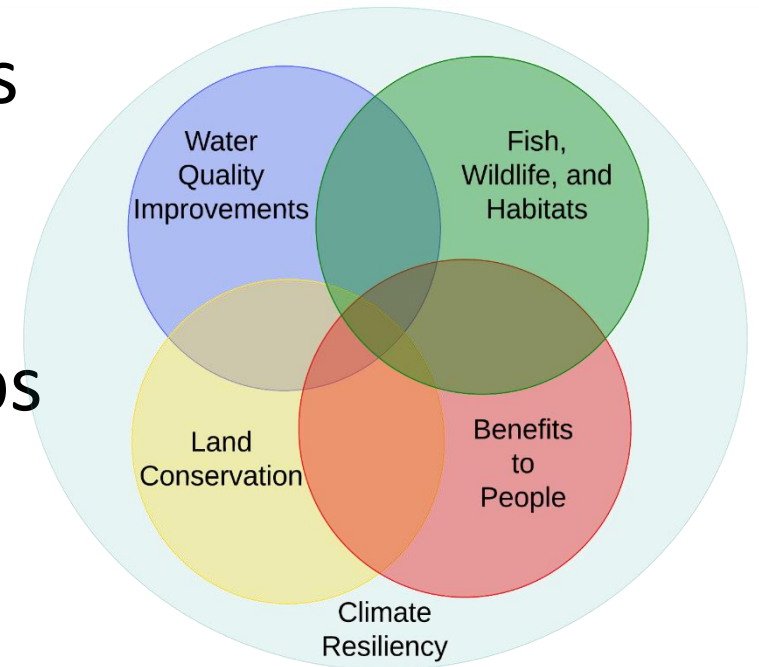


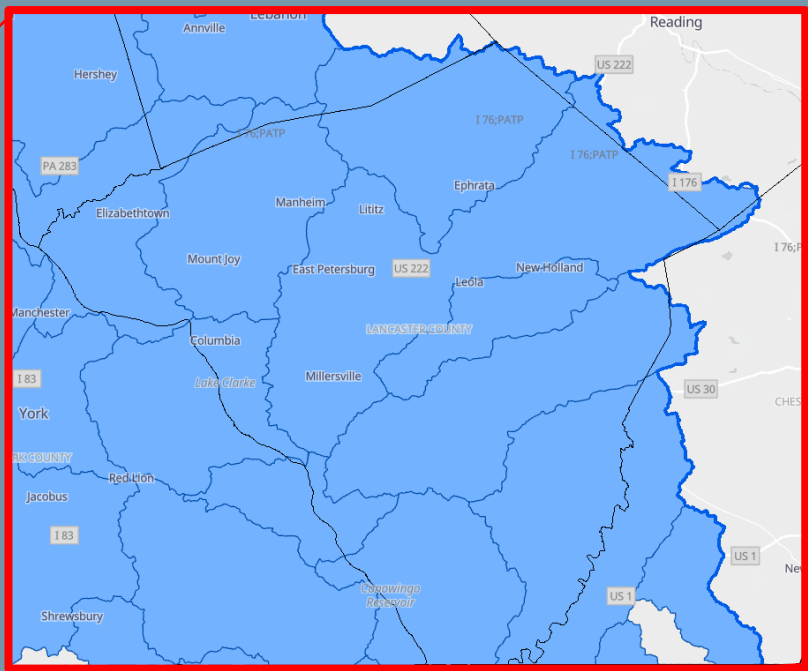
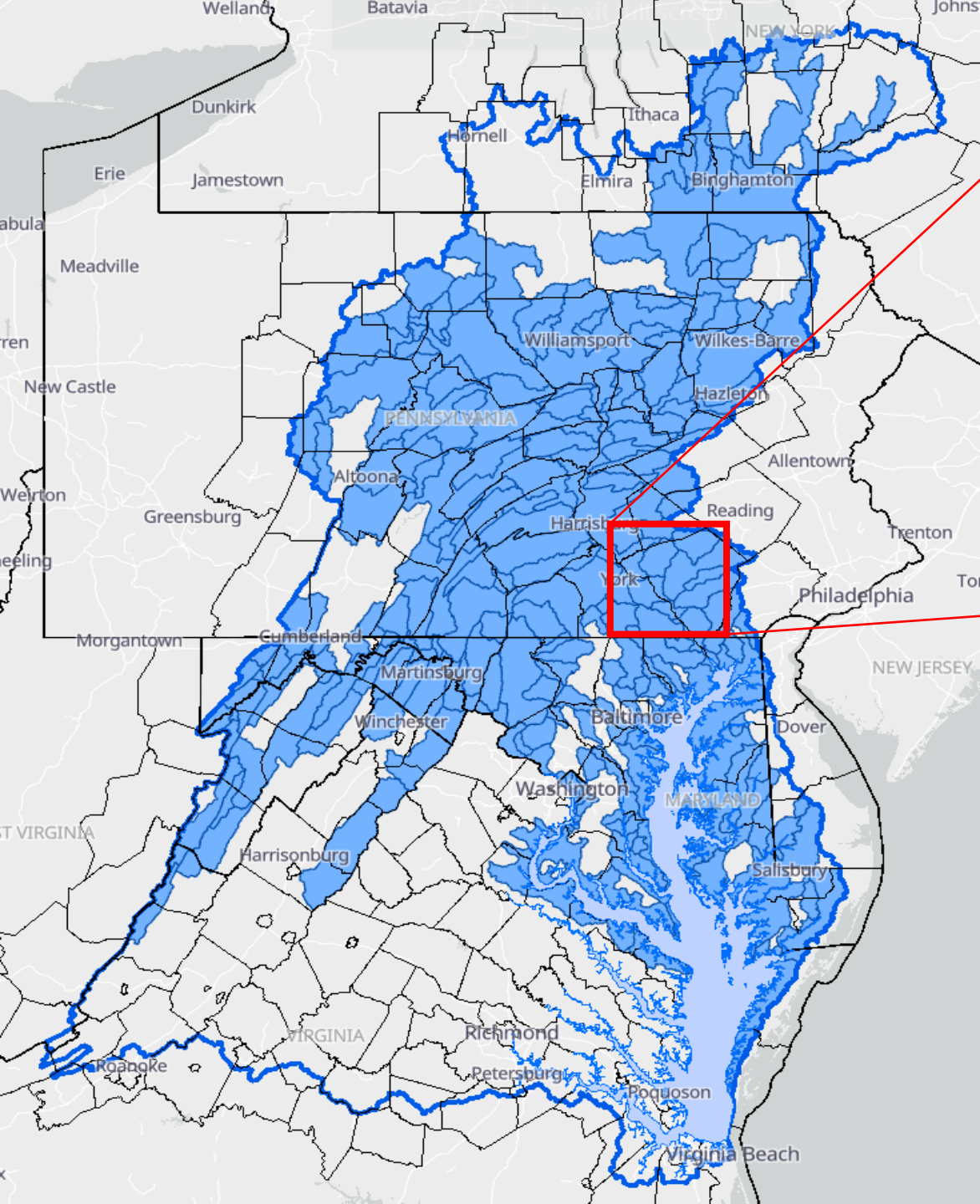
Management Question:

How can additional CBP outcomes for habitats and people be achieved in the Most Effective Basins?



- Example Application: Lancaster County
- Multiple outcomes
- Tools & integrating maps
- Programs



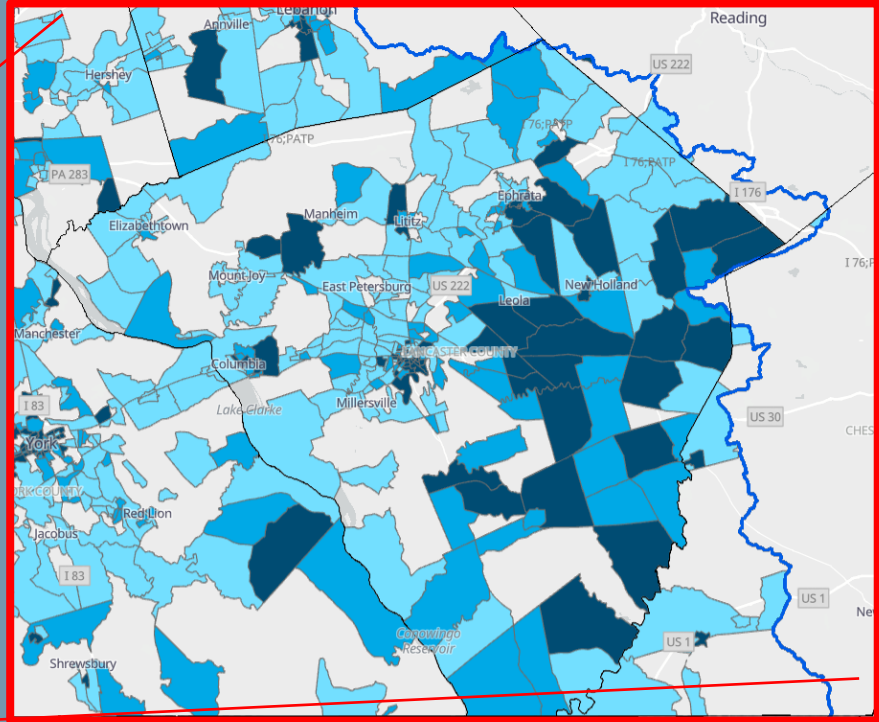
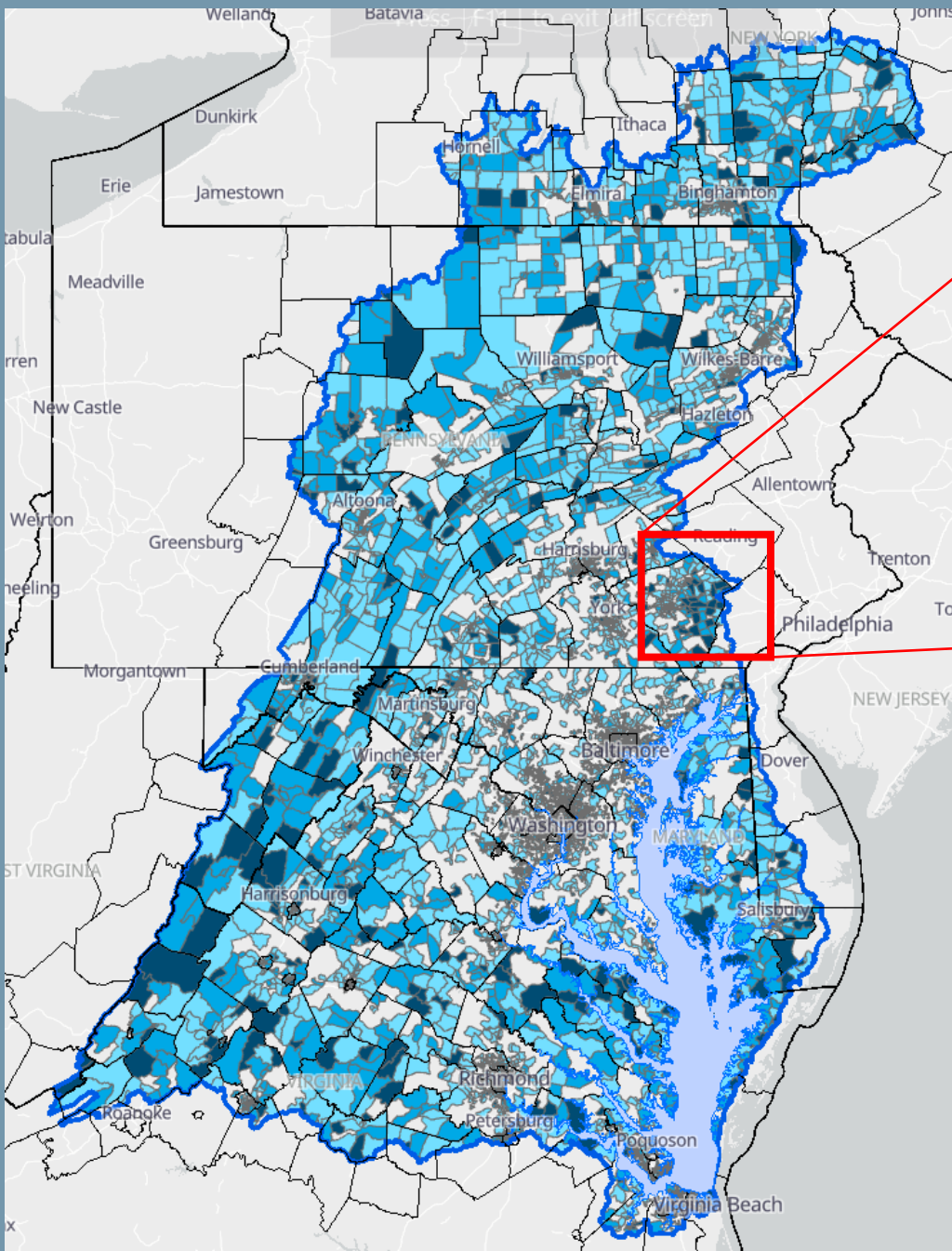


2 CBP Outcomes

- Bay TMDL & Standards Attainment

Tool: Most Effective Basin Map

Programs: EPA CBP Grants & State Programs

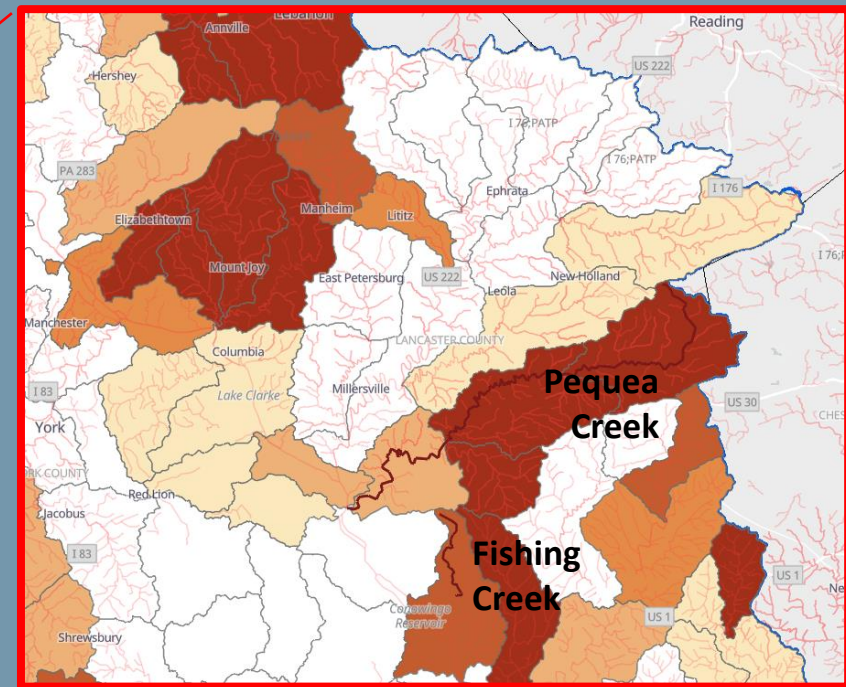
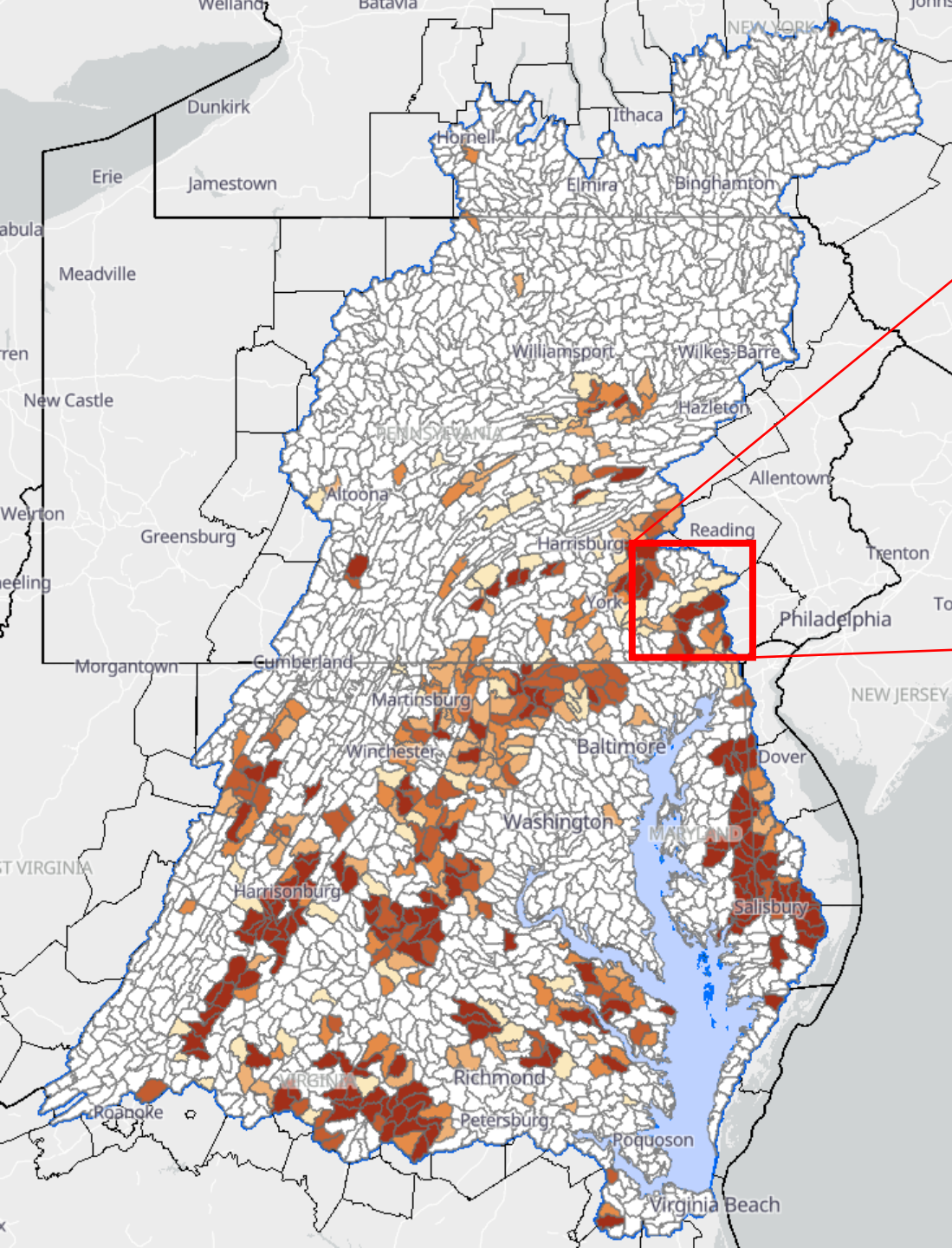


3 CBP Outcomes

- Bay TMDL & Standards Attainment
- *Diversity*

Tools: MEB + *Disadvantaged communities*

Programs: EPA, States, +EPA Grant for *Disadvantaged Communities*

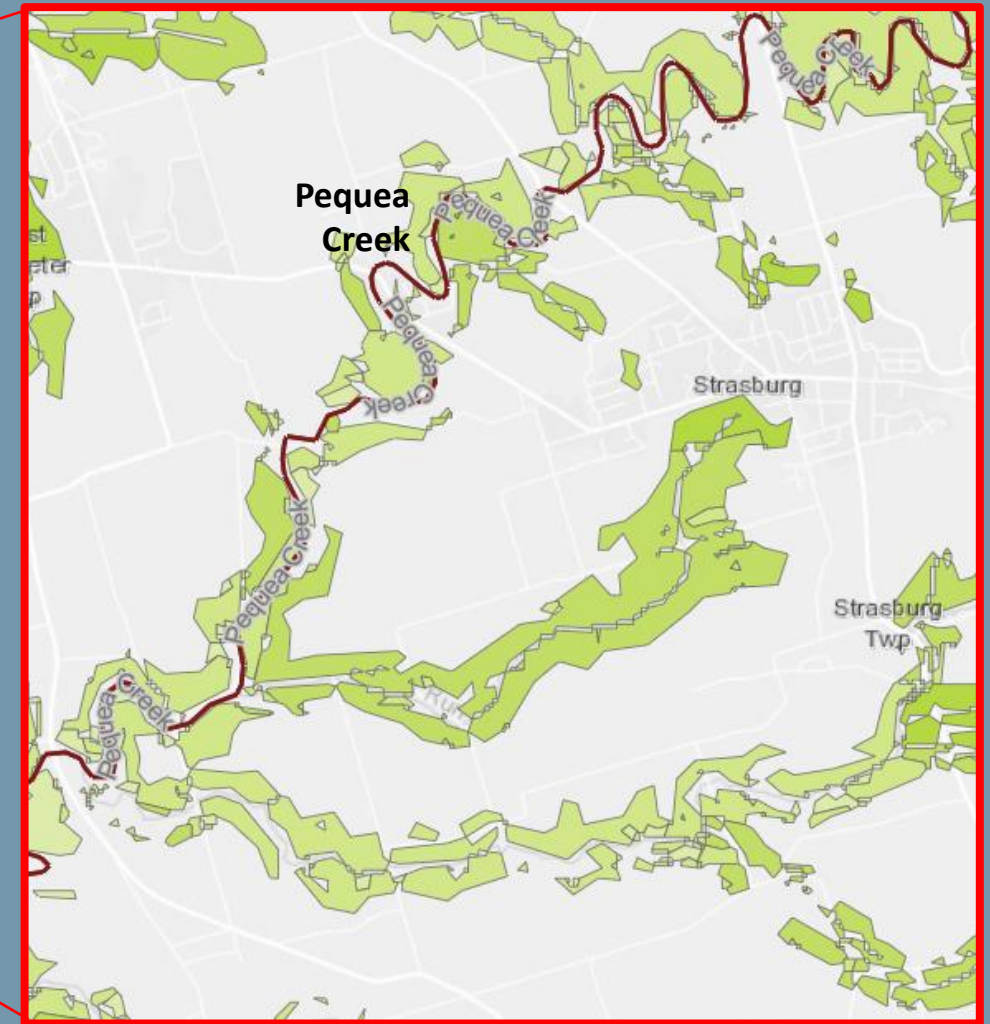
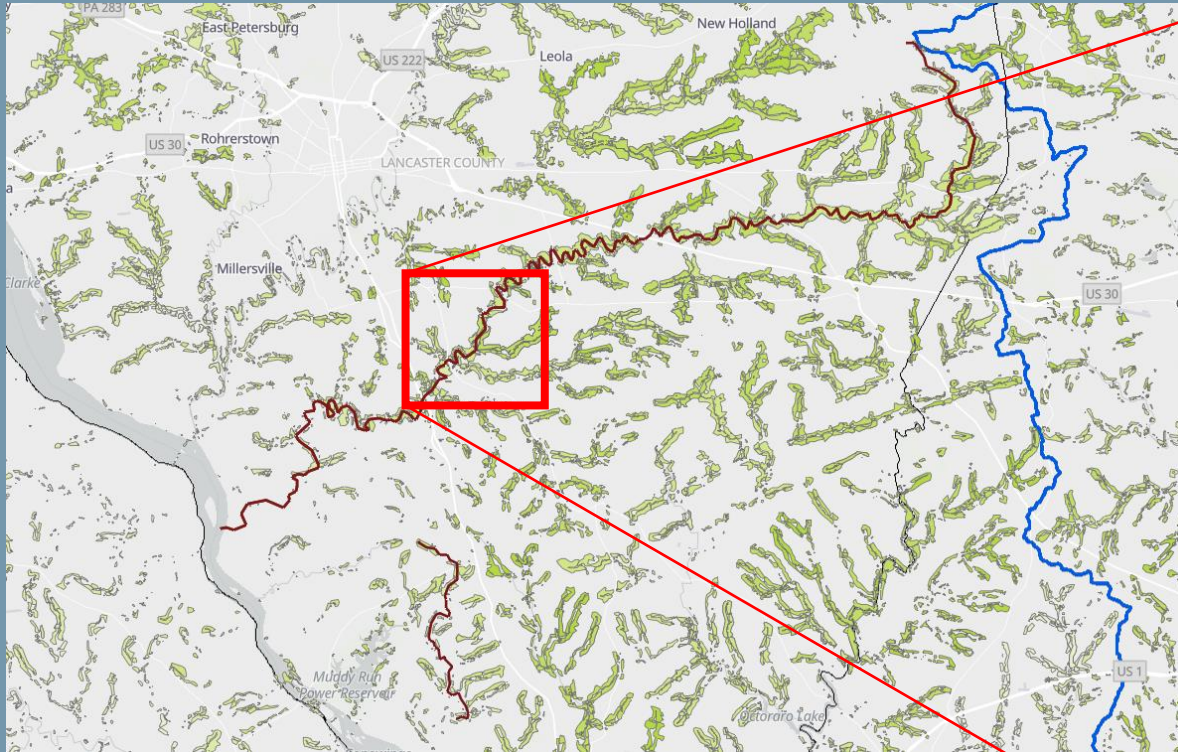


4 CBP Outcomes

- Bay TMDL & Standards Attainment
- Diversity
- *Stream condition/local waters*

Tools: + *Ag Priority Watersheds*

Programs: – EPA, States + *NRCS Programs*



5 CBP Outcomes

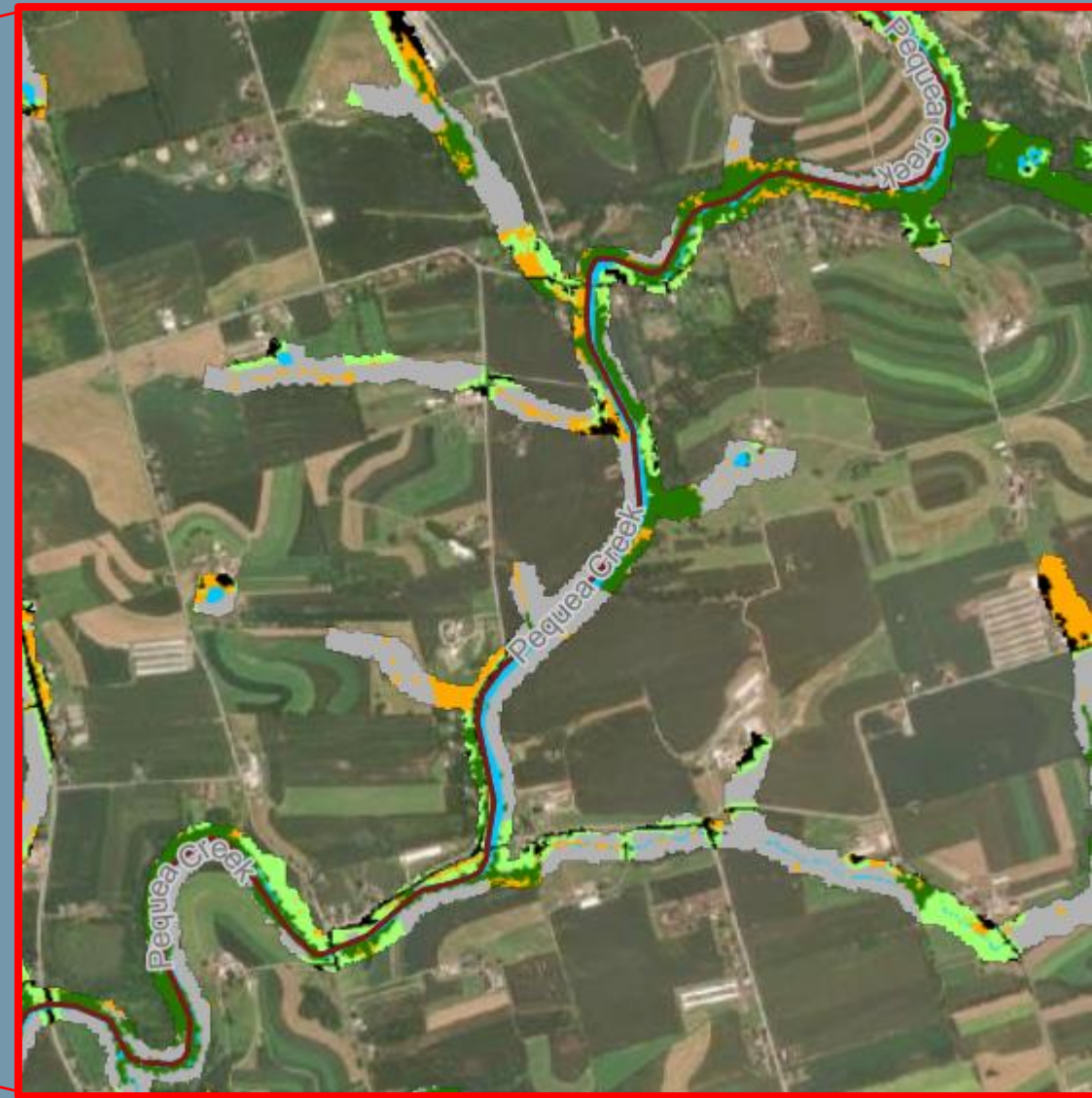
- Bay TMDL & Standards Attainment
- Diversity
- Stream condition
- *Forest buffers*

Tools: + *Forest buffers*

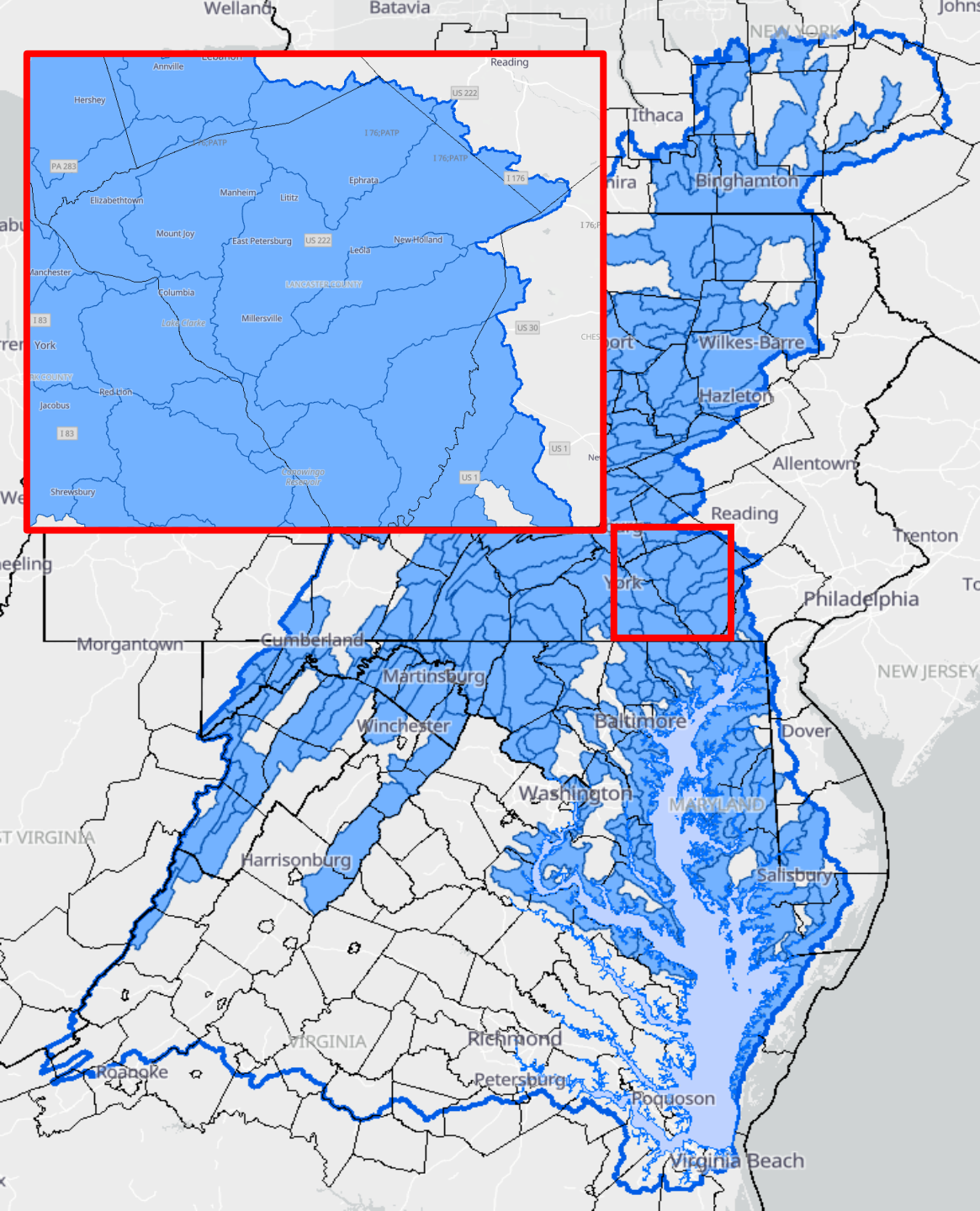
Program: – EPA, States, NRCS,
+ *local programs*



Current land cover:
30 meters



New High-Resolution
Land Data



Lancaster Opportunities

CBP Outcomes: Multiple benefits for WQ, Habitat, and People

Opportunities

Demonstrate how resources can be targeted through multiple programs

- *What other outcomes would you like considered?*
- *What other Programs could be included?*
- *What other information would help?*

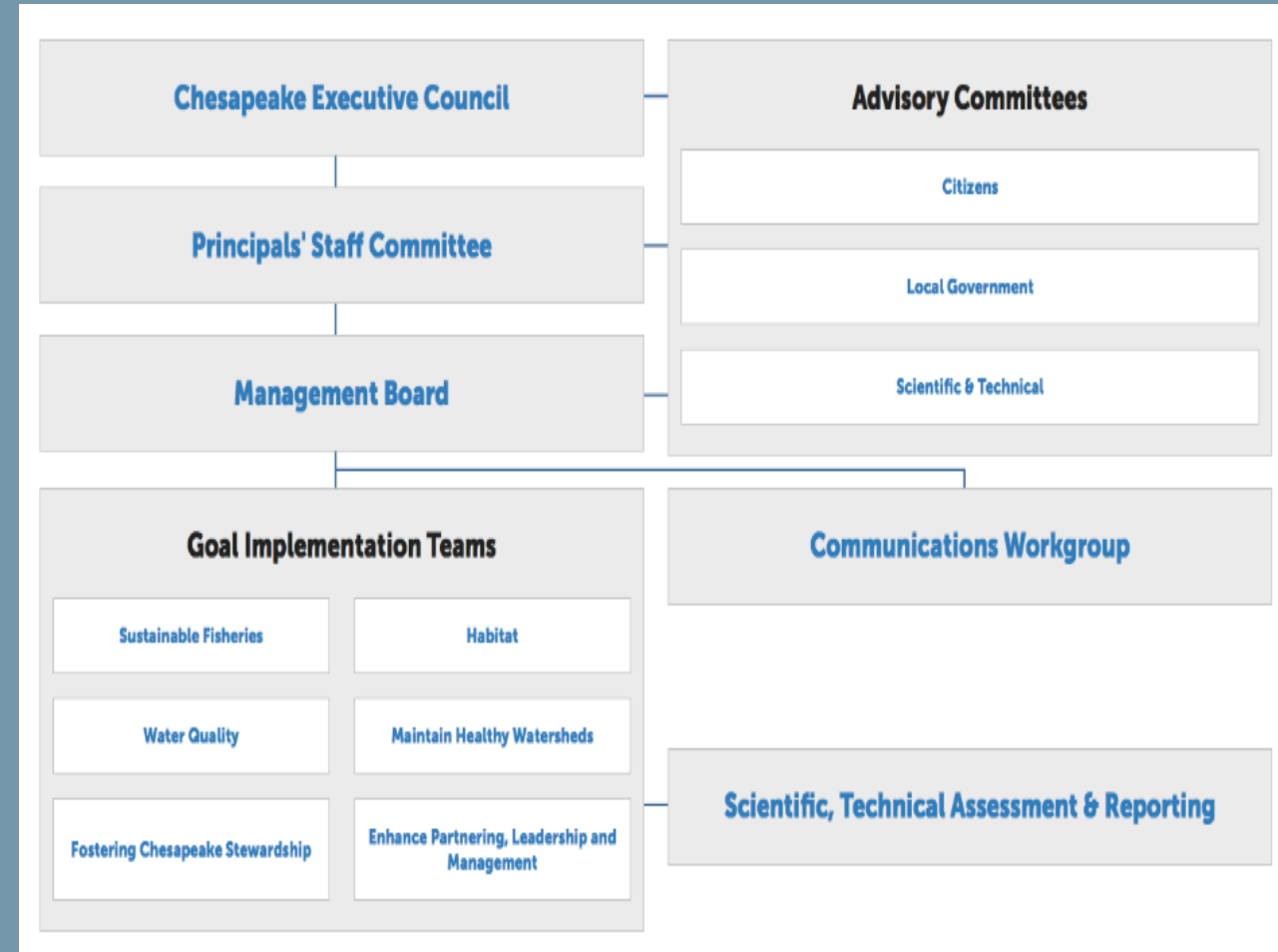
Next Steps for Targeting Effort and Discussion



Chesapeake Bay Program

Science. Restoration. Partnership.

- **CBP interaction**
 - GITs: stakeholder interaction
 - MB and PSC: Agencies involved in funding and polices
 - NGOs and local governments
- **Short-term actions**
 - Web Hub
 - Promote use of existing tools
 - Ecosystem services for selected BMPs
- **Longer-term action**
 - Enhance tools with new land use data
 - Connections between tools
 - Provide stakeholder support
 - Would require more resources





Contacts and More Information



Chesapeake Bay Program

Science. Restoration. Partnership.

Contacts

- John Wolf, USGS and CBP GIT Leader jwolf@chesapeakebay.net
- Scott Phillips, USGS Chesapeake Bay Coordinator
swphilli@usgs.gov
- Ken Hyer, USGS CB Associate Coordinator kenhyer@usgs.gov

- Targeting Chesapeake Resources to Achieve Multiple Outcomes and Local Benefits

[approaches for targeting cbp resources latest updated april 28 2022.pdf \(chesapeakebay.net\)](#)

- Web Hub [Targeting \(chesapeakebay.net\)](#)

