

CBP Meeting Nov. 15, 2022

- ▶ The Williamsport, Pa TOGI project
- ▶ Presented by Dr Mel Zimmerman; Director Lycoming College Clean Water Institute and Steering Committee member

Targeted Outreach for Green Infrastructure (TOGI) in Vulnerable Areas

Restore America's
Estuaries - Coastal &
Estuarine Summit

December 2022



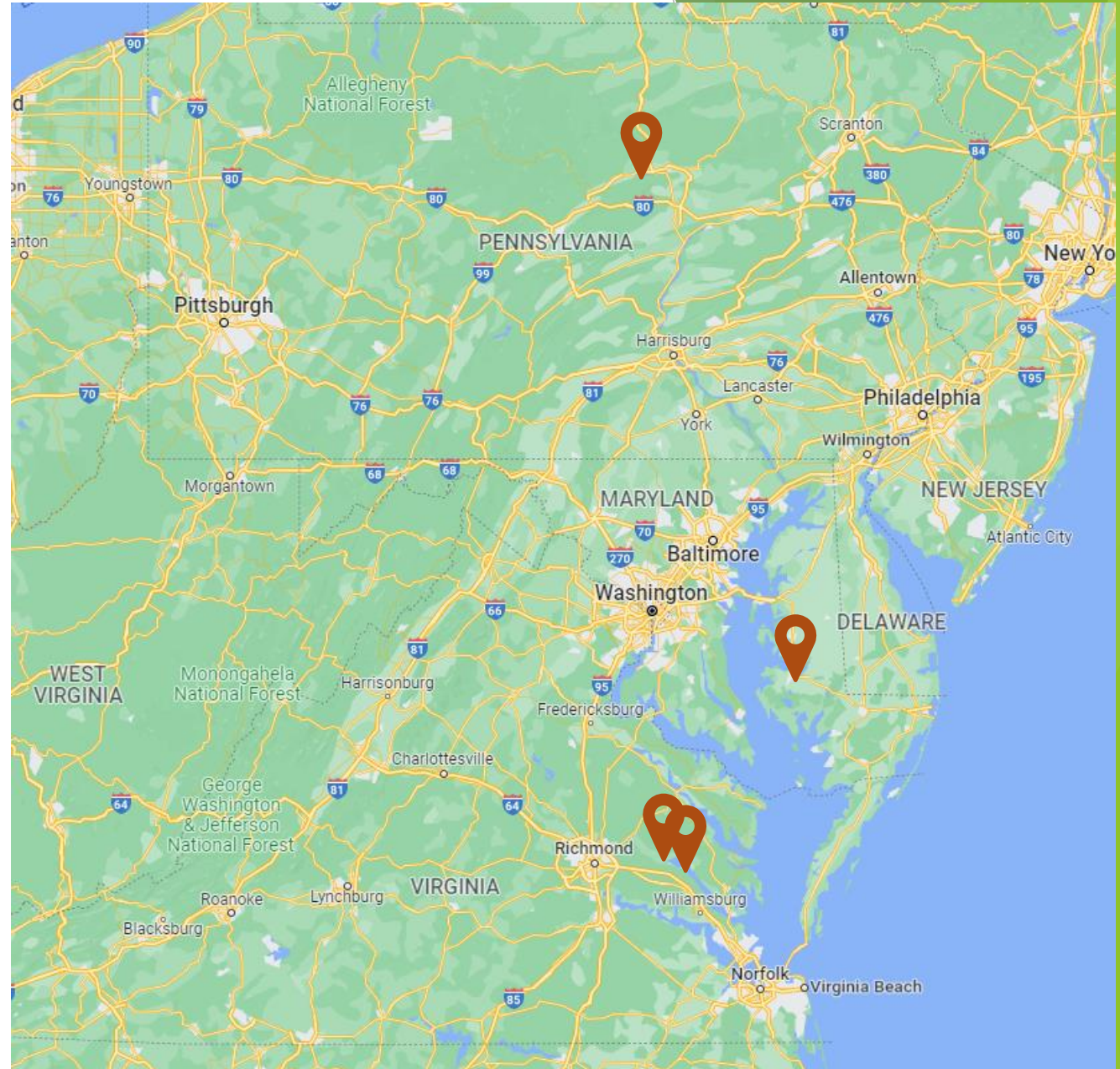
Chesapeake Bay Program
Science. Restoration. Partnership.

Targeted Outreach For Green Infrastructure - Overview

- Project funded by EPA through the Chesapeake Bay Program Habitat Goal Implementation Team. Emphasis is to provide green infrastructure that also benefits habitat priorities for the Bay Program.
- Focus on a range of diverse communities at risk from impacts of weather extremes and climate change affects, including communities that have faced environmental injustices.
- Develop green infrastructure concepts and help find funding sources for implementation.

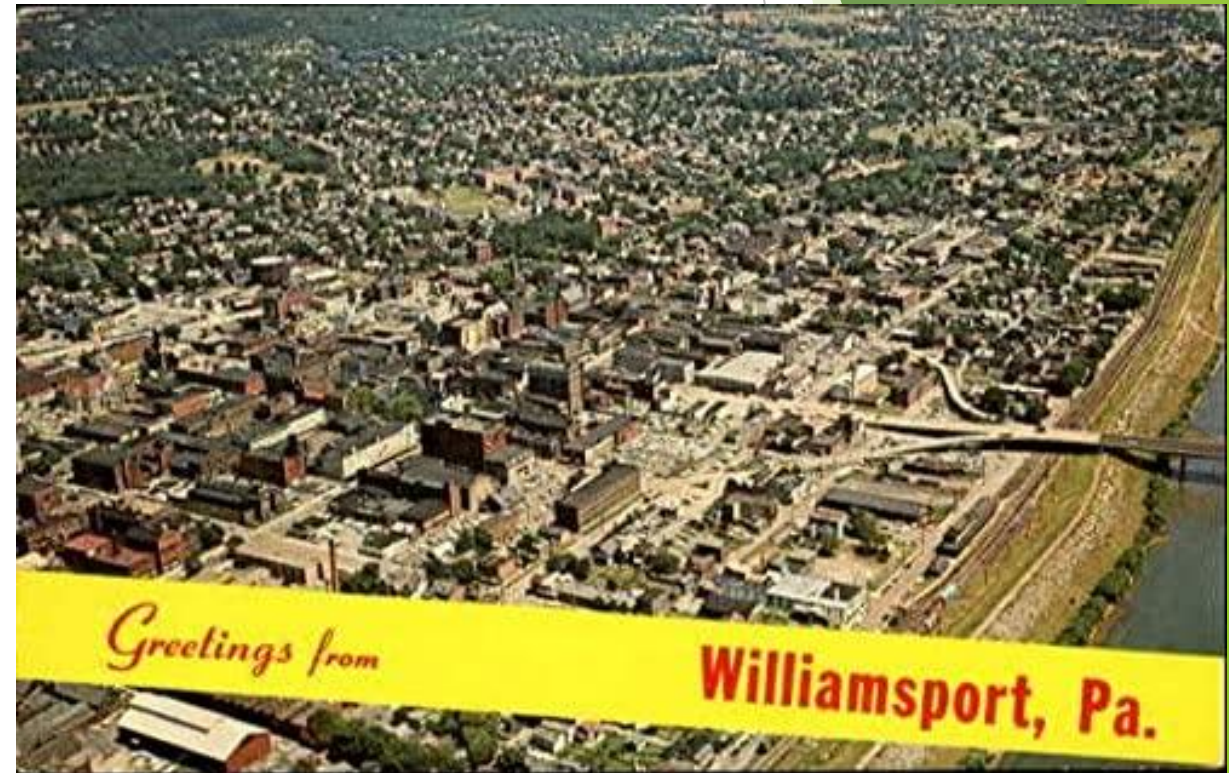
TOGI Communities

- Cambridge, MD
- Williamsport, PA
- Upper Mattaponi Tribe, VA
- Mattaponi Tribe, VA



Williamsport, Pa- population 28,000

- 1. Ideal size for a project like this one.**
- 2. Existing contacts within our steering committee**
- 3. An area which historically does not receive significant outside investment**



Site selection by project team 2019-2020; steering Committee organized 2020-2021

TOGI Project Team

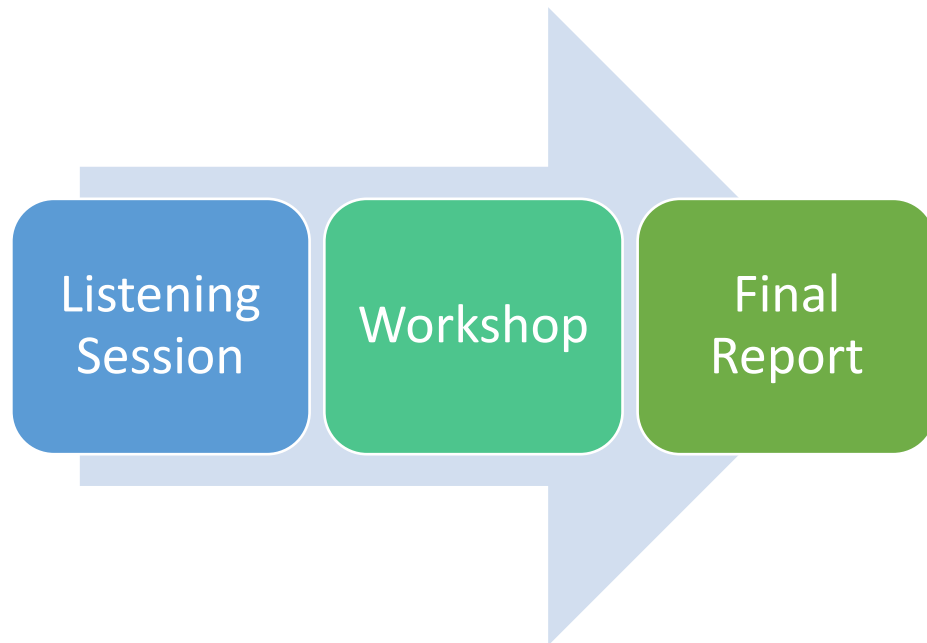
- Chris Guy, U.S. Fish and Wildlife Service & Chesapeake Bay Program
- Briana Yancy, U.S. Environmental Protection Agency
- Katlyn Fuentes, Chesapeake Research Consortium
- Alisa Wilson, Skeo Solutions
- Catherine Brown, Skeo Solutions
- Marissa Sperry, Skeo Solutions

WILLIAMSPORT STEERING COMMITTEE

- Renee Carey, Northcentral Pennsylvania Conservancy
- Stan Carey, University of Pittsburgh Medical Center (UPMC) Community Outreach Specialist
- Billy Clees, Lycoming County
- Wes Fahringer, Pennsylvania Department of Conservation and Natural Resources (PA DCNR)
- Sid Furst, Salvation Army Community Garden
- Kelsey Green, Lycoming County
- Sonja Jahrsdoerfer, United States Fish and Wildlife Service
- Ralph Kisberg, Responsible Drilling Alliance
- Meghan Lehman, Pennsylvania Department of Environmental Protection (PA DEP)
- Alice Trowbridge, Heart of Williamsport
- Scott Williams, Lycoming County
- Lori Yeich, Pennsylvania Department of Conservation and Natural Resources (PA DCNR)
- Mel Zimmerman, Lycoming College Clean Water Institute

Process;

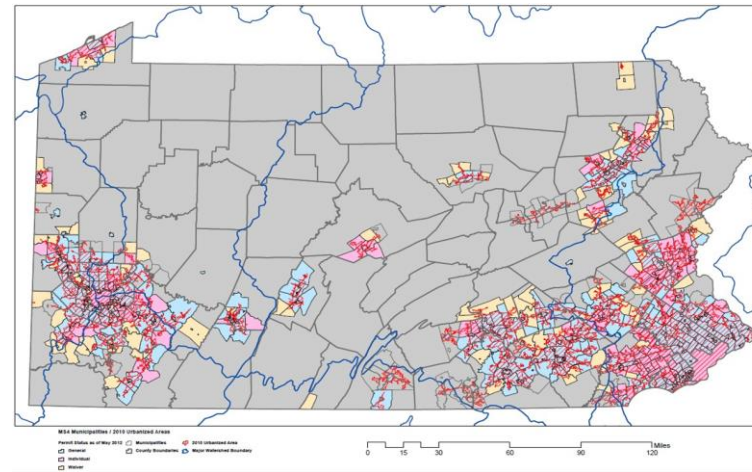
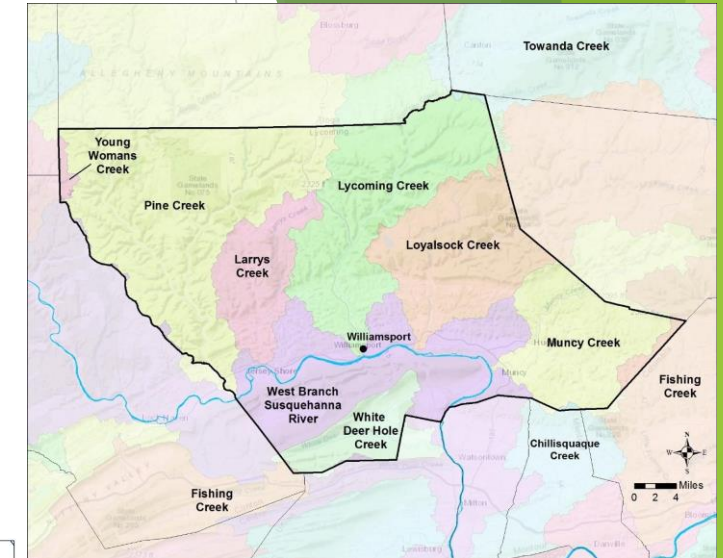
listening session at Lycoming College OCT 2021;Workshop Feb.
2022;Final Report May 2022)



Chris Guy at Listening Session

“Conflicting” programs/considerations during process

- ▶ Change in governance- new mayor 2020
- ▶ Williamsport one of 9 municipalities/burrows under MS4 stormwater initiative
- ▶ Lycoming County completed a County Action Plan (CAP) to address county goals to reduce sediment, nitrogen and phosphorus loads as part of state goals for reduction to Chesapeake Bay by 2025
- ▶ COVID/pandemic protocol guidelines for public meetings



Public/hybrid meeting OCT 26, 2021

Listening Sessions and Workshop

A listening session held on Tuesday, October 26, 2021 included 30 participants from across the community for a discussion about community needs, priorities, challenges, opportunities, relevant initiatives, and potential areas and partners for collaboration. A range of projects were identified including:

- Little League Boulevard Streetscape and Safety Improvements
- Improved Connectivity to Downtown
- Expanded Community Garden and Sensory Parks
- Flanigan Park Stormwater and Landscape Improvements
- Round House Multi-use Field Stormwater Improvements
- Street Tree Plantings

Listening session participants were polled to prioritize projects to focus on during a design workshop held on January 19, 2022. The workshop focused on design concepts for

- ① Expanded community garden and park space on vacant lots owned by University of Pittsburgh Medical Center (UPMC) along Greene Street and Kauppe Place, and
- ② Little League Boulevard streetscape enhancements and improved connectivity to downtown.

INVITED STAKEHOLDERS

Many community leaders and organizations shared input about the community's needs, priorities and resources to guide the project. The following people were invited to participate in the listening sessions and design workshop.

- Alice Trowbridge, Heart of Williamsport
- Andrew Leidich, Susquehanna State Park
- Angelique Labadie-Cihanowyz, Sojourner Truth Ministries
- Bill O'Connell, Brandon Park Commission
- Billy Dayton, Firetree Place
- Carey Entz-Rine, Lycoming County Conservation District
- Chris Kemmerer, DCNR PA State Parks
- Connie Robinson, Bethel A.M.E. Church
- Corinne Stammel, Lycoming Habitat for Humanity
- David Banks, City Council
- Dawn Linn, YWCA Williamsport
- Drew Leidich, Susquehanna State Park
- Eric Ryder, Williamsport Manor
- Eric Smithgall, Williamsport Water and Sewer Authority
- Wendy Walter, Williamsport Water and Sewer Authority
- Drew Zimmerman, Williamsport Water and Sewer Authority
- Father David Bechtell, St. Joseph Worker's Parish
- Jackie Oliva-Strus, River Valley Health and Dental Center
- Jared Fencil, Assistant Regional Manager
- Jenny Hull, Family Promise Center
- Jo Jo Potts, Community Advocate
- John Breakeall, PA DEP
- Kelsey Green, Lycoming County
- Billy Clees, Lycoming County
- Scott Williams, Lycoming County
- Kendra Park, American Rescue Workers
- Laura Templeton, Salvation Army
- Lori Yeich, PA DCNR
- Wes Fahringer, PA DCNR
- Megan Lehman, PA DEP
- Mel Zimmerman, Lycoming College Clean Water Institute
- Merilyn Severson, Lycoming County Housing Authority
- Mike Davis, Williamsport YMCA
- Mike Strunk, Hiawatha Paddlewheel Boat Concession
- Nicole Miller, Transitional Living Center
- Pastor Marwin Reeves, Christ Community Worship Center
- Pastor Washington, Antioch Baptist Church
- Rachele A. Abbott, STEP, Inc.
- Ralph Kisberg, Responsible Drilling Alliance
- Renee Carey, Northcentral Pennsylvania Conservancy
- Ron Frick, Lycoming County United Way
- Sid Furst, Salvation Army Community Garden
- Sonja Jahrsdoerfer, U.S. Fish and Wildlife Service
- Stan Carey, UPMC Community Outreach
- Tim Mahoney, Lycoming Health Improvement Coalition
- Todd Wright, Hiawatha Paddlewheel Boat Concession
- Travis Berg, Central Pennsylvania Food Bank
- Valerie Fessler, American Rescue Workers

Williamsport, PA

- ↳ Listening Session held on October 26, 2021
- ↳ Expanded community garden and park space on vacant lots and Little League Boulevard with improved connectivity to downtown selected as focus areas.
- ↳ Design Workshop held on January 19, 2022



Project 1 expand community garden on property of UPMC Hospital (current garden organized by Salvation Army- Sid Furst coordinator and member of Steering Committee)



Williamsport, PA – Concept Design- UPMC

Green Infrastructure Strategies

- ↙ Conservation landscaping including native plantings, pollinator gardens and edible landscapes
- ↙ Lawn to meadow areas with low mow maintenance
- ↙ Urban tree canopy including street trees and urban forests
- ↙ Pervious pavement to replace existing parking and establish new parking
- ↙ Rainwater storage including rain barrels or cisterns
- ↙ Bioretention areas or rain gardens with planted swales along streets, buildings and parking



Williamsport, PA – Concept Design

Community Amenities

- ↙ Lawn Gathering Area
- ↙ Pollinator Habitat/Edible Landscapes
- ↙ Sensory/Healing Garden
- ↙ Community Garden
- ↙ Children's Play Area
- ↙ Contemplative Garden



Williamsport, PA – Concept Design for Little League Boulevard

The listening session helped to establish goals and needs for the Little League Boulevard corridor including:

- ↳ traffic calming
- ↳ Crosswalks
- ↳ bike lanes
- ↳ greening with street trees
- ↳ green stormwater infrastructure to manage runoff
- ↳ safer and easier connection to community amenities (such as Hepburn Plaza and downtown).
- ↳ street enhancement and beautification, including replacing the fencing with natural barrier where appropriate



Little League BLVD; wide, few trees , sidewalk only on one side, lots of chain-linked fences



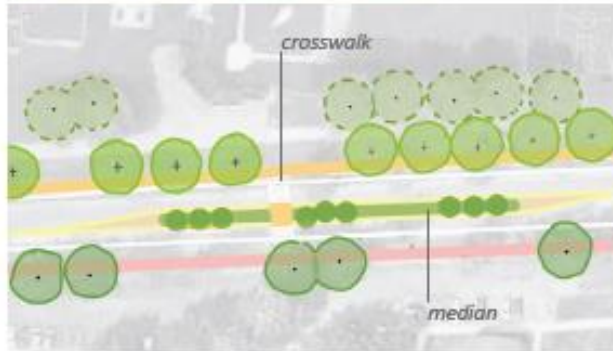
Williamsport, PA – Concept Design



The concept design for Little League Boulevard includes street trees north of the sidewalk, midblock crossings to slow traffic and manage stormwater, new sidewalks on south side of the street, bike lanes and fence removal alternatives.

Williamsport, PA – Concept Design

① Firetree Place Midblock Crossing



View of existing conditions near Firetree Place on Little League Boulevard

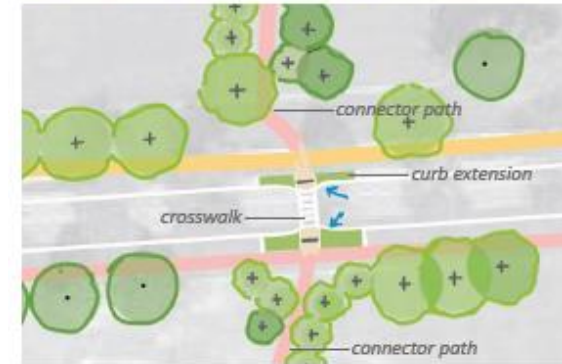


Example of proposed mid-block crossing

Proposed features:

- Planted median to slow traffic and provide safe space for pedestrians
- Median to capture and infiltrate stormwater
- Crosswalk and flashing lights to improve pedestrian safety
- Plant new trees to replace trees along sidewalk

② Locust Street Midblock Crossing and Connector



View of existing conditions near Round House Field



Proposed connection along Round House Field to Locust Street



Example of curb extension with integrated sidewalk connection and bioswale

Proposed features:

- Curb extension (or bumpout) with integrated sidewalk connection and bioswale* at midblock
- New sidewalk along fence line with plantings
- Extended walking paths north and south of Little League Boulevard to connect to Locust Street
- Plant new trees for shade and wayfinding along new sidewalk and connecting path

*aligns with existing street storm drains for connection to existing drainage network

Williamsport, PA – Concept Design

③ Center Street Midblock Crossing and Connector



Proposed features:

- Add traffic calming curb extension (or bumpout) with crosswalk and sidewalk connection
- Consider integrating green infrastructure by including a curb cut inlet and bioswale in curb extension
- Extended sidewalk to connect Center Street to Lycoming Street
- Plant street trees and shrubs along new sidewalk



Example of proposed mid-block crossing



Proposed connection to Center Street and Lycoming Street

④ Hepburn Plaza Intersection



Proposed features:

- Extend curb to create shorter crosswalk distance and improve pedestrian safety
- Plant street trees for shade and natural buffer between properties and sidewalk



View of existing conditions at intersection of Little League Boulevard and Hepburn Street



Proposed curb extension and sidewalk to shorten crosswalk

Natural Fencing Options

Currently, Little League Boulevard has chain link fencing on both sides from Campbell Street to Heburn Street. The chain link fencing may only be necessary in specific areas, such as playgrounds and residential yards, and some sections could be replaced with natural materials or alternative barriers.

Natural buffers or barriers along Little League Boulevard could include street trees, boulders, evergreen hedges and plantings. Increasing planting areas can provide more pervious surfaces to catch and filter stormwater, create urban habitat areas, and enhance streetscapes.

There is an inequity throughout the city with regards to where the trees have been planted. Lower income neighborhoods tend to have less trees. Increasing shade trees can reduce heat island effects, manage stormwater, increase habitat and contribute to beautification efforts in the community.

The plan below proposes areas for fence removal and replacement to improve the streetscape and pedestrian experience.



The concept plan proposes areas for fence removal and replacement with alternative buffer materials.

① FireTree Place

- Install fencing for safety.
- Plant trees and shrubs for shade and beautification.

② Timberland Apartments

- Retain existing fencing to comply with operations requirements.
- Reduce fencing to areas where access restriction is needed.
- Install boulders and screening plants in areas where access or sightlines need to be limited.



① Round House Field

- Fencing needed for safety
- Trees and other plantings could be added to provide shade and beautification.

② Memorial Townhouses

- Fencing needed for safety around playground and residential backyards.
- Trees and other plantings could be added to provide shade and beautification.

③ Senior and Elderly Housing

- Reduce fencing to areas where access restriction is needed.

④ Housing Along South Little League Boulevard

- Consider reducing fencing to areas where access restriction is needed.
- Trees and other plantings could be added to provide shade and beautification.

Alternative Fencing Illustration

The illustration below shows how a combination of shade trees, hedge row, and boulders to prevent vehicular access can achieve safety, access and neighborhood beautification goals.



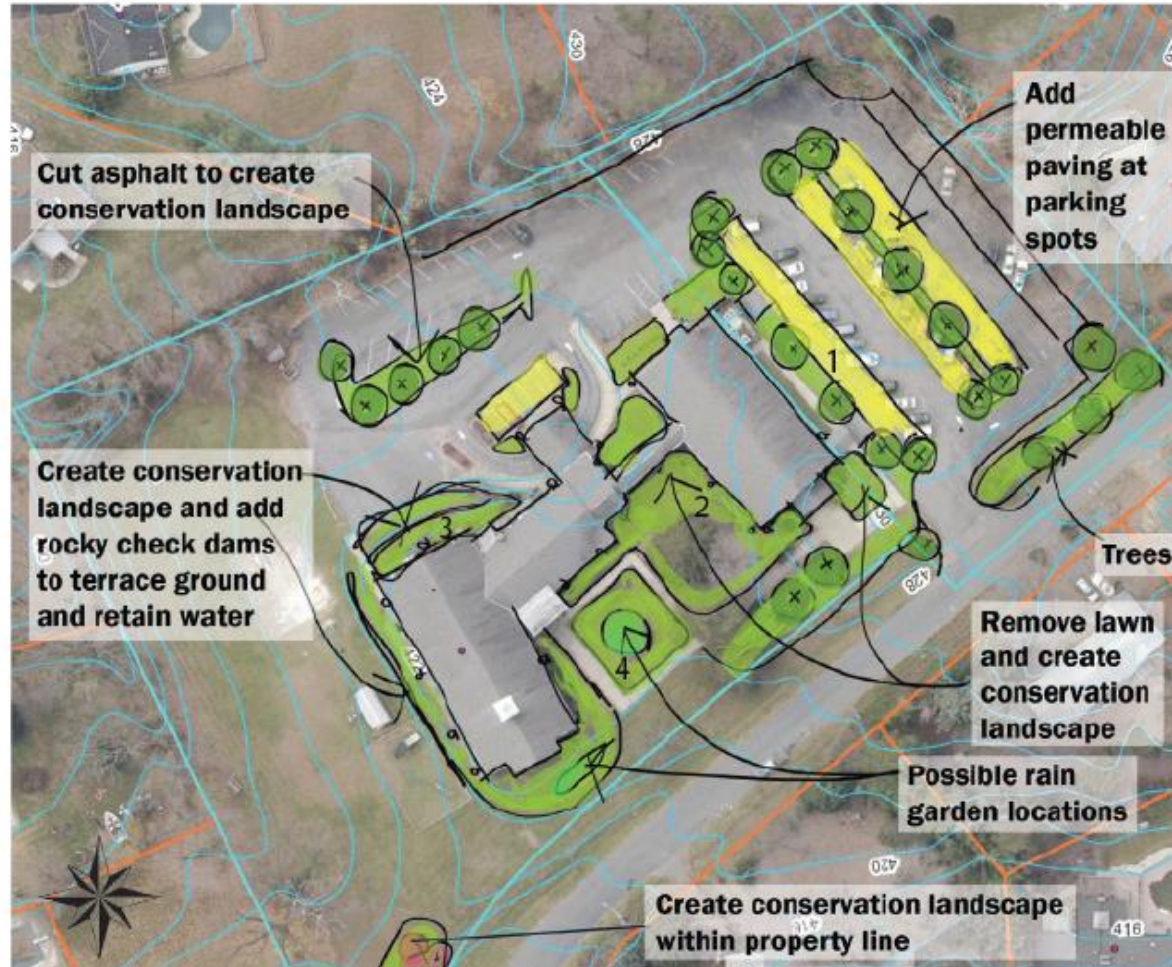
Existing



Illustrative rendering of alternative fencing options

Parking Lot Retrofits

The existing parking lots at the apartment complexes, churches and businesses provide an opportunity to improve stormwater management. The diagram below illustrates how an existing church parking lot could be retrofitted to include features for improved stormwater management, additional shade trees to reduce urban heat and planting areas that reduce mowing requirements and support urban habitat.



Williamsport, PA

- ↳ The community garden gained a lot of traction with support from University of Pittsburgh Medical Center (UPMC)
- ↳ The other concept design for Little League Blvd still needs more support from the City of Williamsport to move forward



Laura Templeton of the Salvation Army unveils the newest plans for the Red Shield Community Garden. C. Pauling / NCPA



Sid Furst and Rickie Lee (leaning against the lawnmower). The men have been friends throughout the years, tending to the community garden. Lee, too, is a staple at the site, watering, weeding, mowing, and harvesting every day. C. Pauling

Next steps

Community Engagement

The TOGI pilot project and initial designs are intended to be a springboard for a full community planning process and a means to organize partners to support efforts to secure funding for implementation, through grants and other resources. The Williamsport Steering Committee and community stakeholders underscored the importance of broader community engagement to refine the concepts as any of the projects move forward. There are a range of ways to reach and engage residents, especially those living in this area. Examples of community engagement opportunities include the following:

- Coordinate with existing community organizations on community outreach to involve residents in planning and volunteer opportunities, such as planting and maintenance.
- Work with local faith-based organizations to engage congregations in planning, implementation and volunteer opportunities.
- Pursue sponsorship and partnership opportunities, such as interest in job training opportunities through the Pennsylvania Recreation and Parks Society.
- Work with Pennsylvania DCNR on green infrastructure in parks and green space along Little League Boulevard.
- Work with educators and schools around environmental aspects and practices for all ages, this could include demonstration features.
- Hold community events or pop-up events to raise awareness and build support for the park project.
- Convene property owners along Little League Boulevard to discuss a strategic fencing plan.



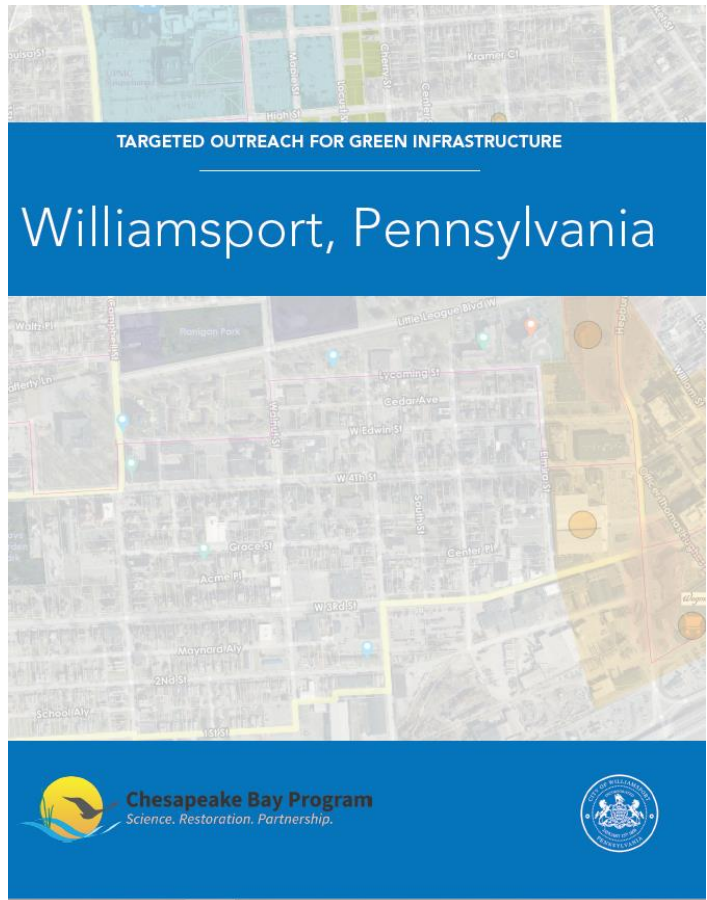
Next Steps 2

Next Steps

The concept plans can be used to support grant applications and serve as a catalyst to engage and spark community interest in transforming the vacant lots into a community amenity and improve safety and access along Little League Boulevard. There are a range of funding opportunities that can support moving this project forward.

Participants noted that local champions are needed to seek funding for grant applications and that projects identified during this planning process could be considered as part of the citywide green infrastructure plan that is expected to launch soon. Early implementation of smaller projects could help bolster support for the larger projects and secure additional funding by strengthening partnerships.

FINAL REPORT May 2022



↵ QUESTIONS?
↵ THANK YOU

↵ zimmer@Lycoming.edu