

QUARTERLY PROGRESS MEETING – March 9 2023
Chesapeake Bay Program



Land Use Options Evaluation

Jeff Lerner

*EPA Partnership Programs Branch
Chief with the EPA Office of Wetlands,
Oceans and Watersheds (OWOW)*

*Maintain Healthy Watersheds GIT,
Chair*

Photo: Chesapeake Bay Program; Slides prepared by
Sophie Waterman, CRC and Renee Thompson, USGS

Through the Chesapeake Bay Watershed Agreement, the Chesapeake Bay Program has committed to...



Image: Conservation Innovation Center

Goal: *Land Conservation*

Outcome: *By the end of 2017, with the **direct involvement** of local governments or their representatives, **evaluate policy options, incentives and planning tools** that could assist them in continually improving their capacity to **reduce the rate of conversion of agricultural lands, forests and wetlands** as well as the rate of changing landscapes from more natural lands that soak up pollutants to those that are paved over, hardscaped or **otherwise impervious**.*

A yellow rectangular sign with the words "PUBLIC NOTICE" in bold, black, sans-serif capital letters at the top. Below the title, there is some smaller, illegible text. The sign is planted in a green grassy field. In the background, there is a line of bare trees under a clear sky.

Land Use Options Evaluation - Context

2014 – This outcome was included in the Agreement to provide tools and support to local governments to ensure their capacity to plan for and mitigate land change impact. – source

2014 “Current” condition? – WIP process shed light on the differences between CBP land use and local-scale information

Why this Outcome? – This outcome responds to public comments related to the need to address the extent and impact of land use change (the Land Use Workgroup and the Water Quality GIT were instrumental in this outcome)



What is our Outlook and Recent Progress?

35

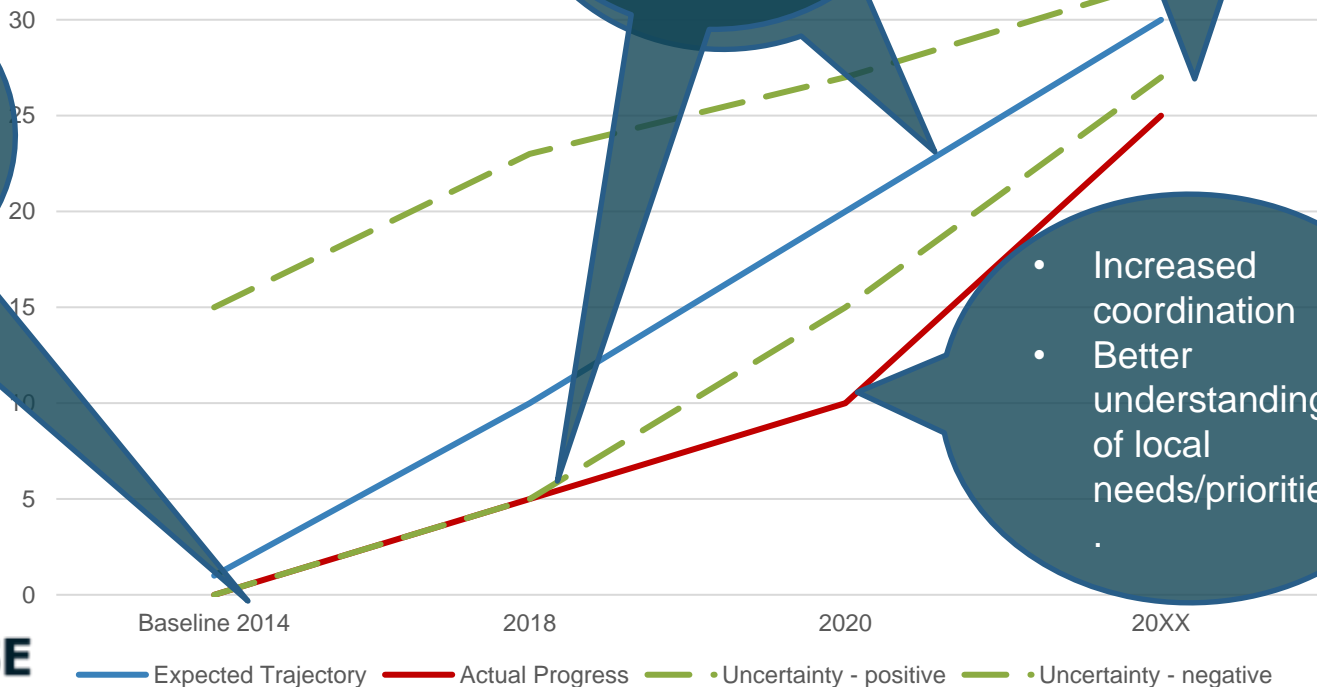
Need:

- Local land use data
- Increase capacity to reduce conversion

- High resolution land use/land cover
- Developed resources

- Tie pieces together
- Did we meet needs??

- Increased coordination
- Better understanding of local needs/priorities





Learn

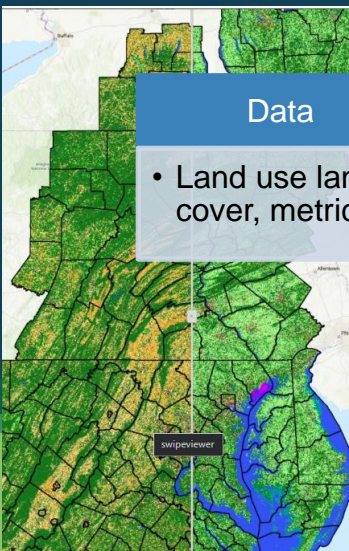
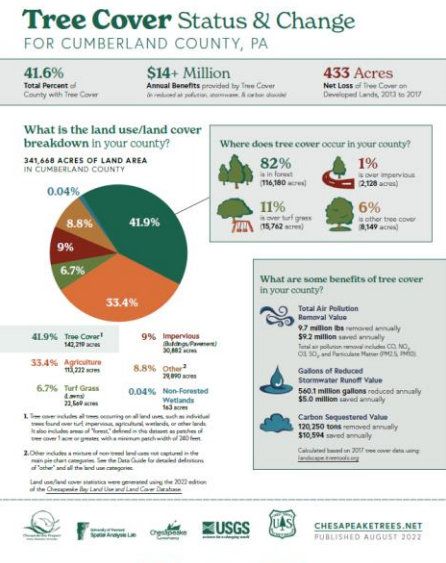
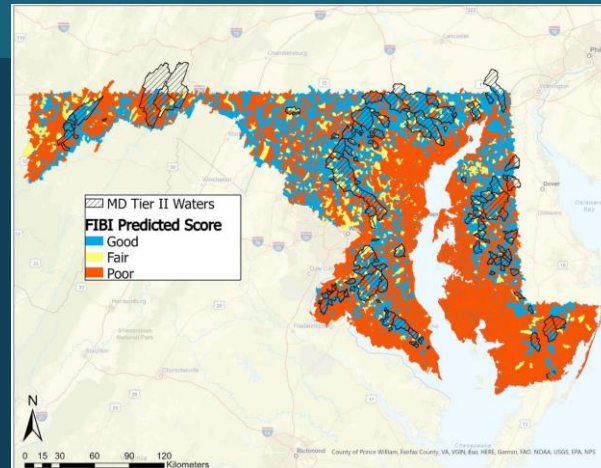
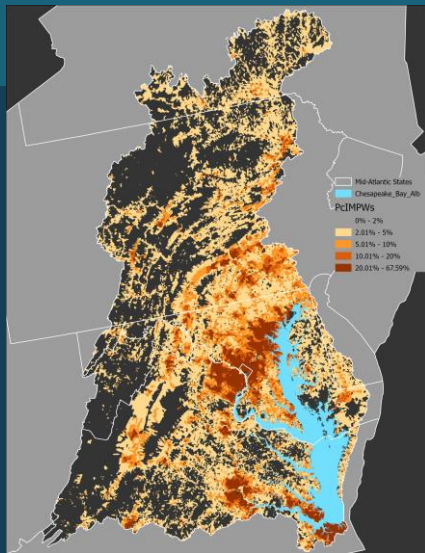
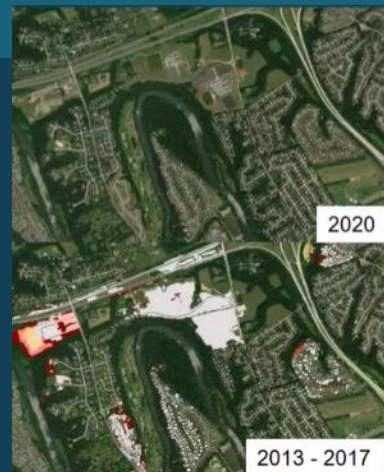
What have we learned in the last two years?



Successes and Challenges

What have we learned?

- We are dependent on the collaboration and participation of related outcomes and workgroups, as well as their work/products
- 2-way input and direct involvement of locals requires a sustained pathway of mutual listening and learning.
- This outcome is qualitative there remains a need to understand if our efforts are helping to reduce the rate of land conversion
- Population growth and vulnerability of high value healthy watersheds and habitats to conversion (impervious surfaces), remain priority factors affecting our ability to achieve our outcomes.



Data

- Land use land cover, metrics

Tools

- Maps, viewers

Projects

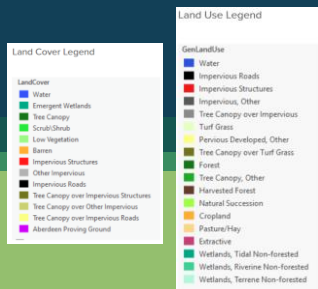
- GIT funding

Presentations

- Conferences and workshops

Communications

- Fact sheets, storymaps

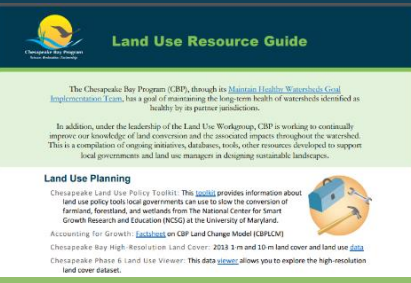


Land Policy & Conservation

Additional Resources

Land Policy & Conservation Background:
[Chesapeake Bay Program Land Conservation Goal](#)
[Chesapeake Bay TMDL and Land Policy BMPs Overview](#)
[Land Policy BMPs Frequently Asked Questions](#)

Land Policy Implementation:
[Chesapeake Bay Trust Conservation Land Use Policy Toolkit](#)





On the Horizon

Scientific, Fiscal and Policy-related developments

Scientific:

- Additional analysis of High-resolution land cover and related metrics (1m, 10m) and change products
- LCMAP – Analysis and distillation
- Evolving communication/outreach plan

Fiscal:

- A new or extended Cooperative Agreement to monitor land use change through 2034.



On the Horizon

Scientific, Fiscal and Policy-related developments

Policy:

- Better incorporate DEIJ and Climate considerations.
- Integrate climate and DEIJ metrics
- Population growth and land use change need to remain in focus beyond 2025

Communication, Translation and Engagement:

- Translate, format, package and flow information through to trusted sources.
- How to effectively engage locals directly (New GIT funding will help to address)



Adapt

How does all of this impact our work?



Based on what we learned, we plan to ...

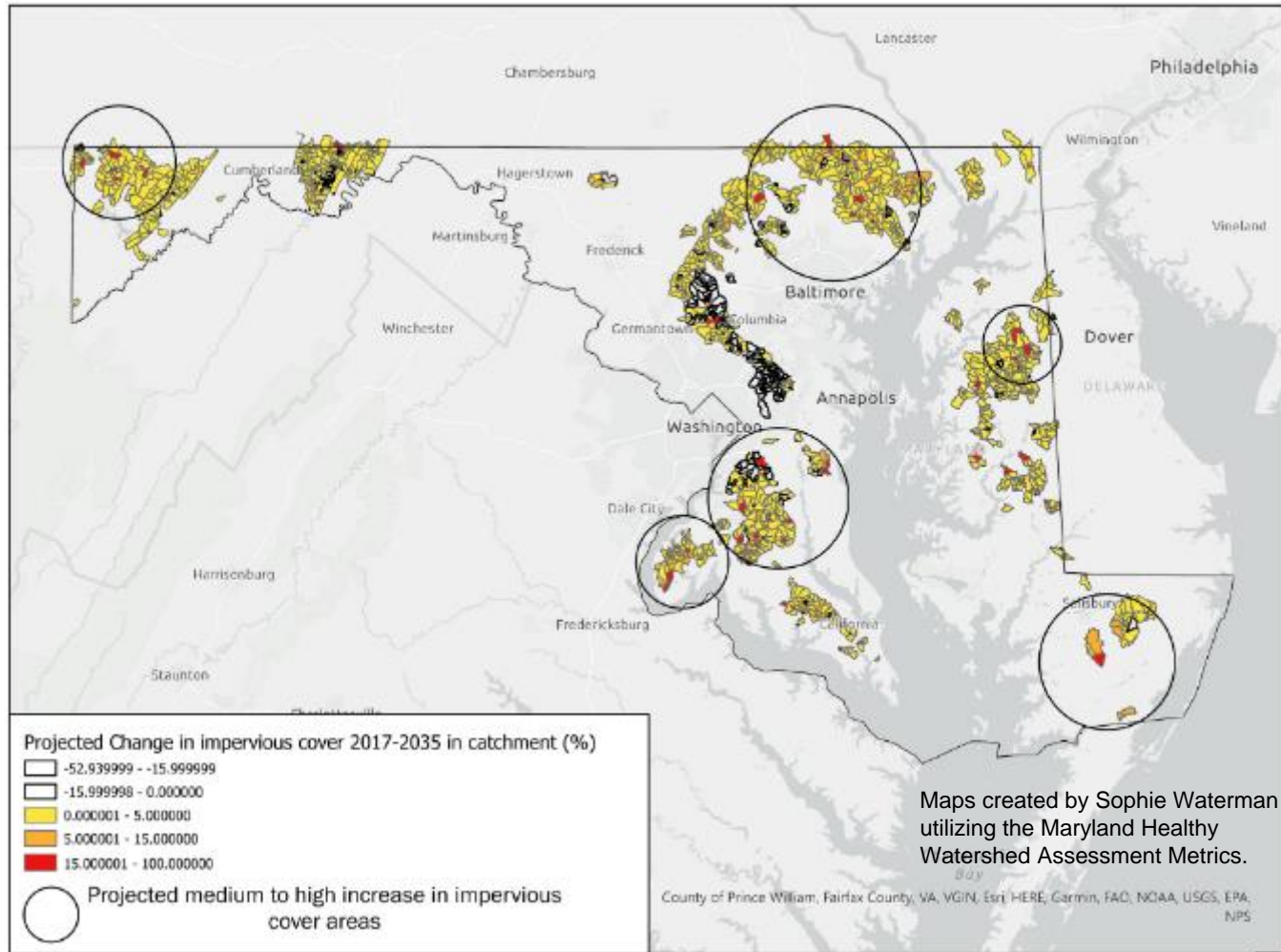
Coordination and Communication:

- Work with relevant CBP groups (Local Government Advisory Committee, Local Leadership Workgroup, Healthy Watersheds GIT, and Forestry Workgroup)
- Community Response to Land Use Change in cooperation with Rachel Felver and others (GIT Funding 2023)
- Coordination with Strategic Engagement Team (SET)

Management Strategy evolution:

- Move to integrate the management strategies for the Land Use Methods and Metrics Outcome and Land Use Options Evaluation Outcome.

Projected Change in Impervious Cover in Maryland Tier II Watersheds





Equitable and inclusive restoration ...

- Diversity, Equity, Inclusion and Justice (DEIJ) and climate considerations are not well accounted for in the LUOE Outcome.
- Need for assessments to be completed to determine how underserved communities would be helped or hindered by sources related to policies, incentives and planning tools to reduce land conversion
- Evolve to support a broader array of local uses of the data
- Supporting flood, hazard mitigation, climate resiliency planning

A large, stylized, light blue letter 'F' is positioned on the left side of the slide. The background is a dark blue vertical band, and the overall slide has a teal header and a light green footer.

Fill the Gap

*How can the Management Board
help achieve the Outcome?*



Filling the Gap

- **BECAUSE** of the need for translation of data and resources and the shared relationship of the land use outcomes,
- **Over the next 2 years, we PLAN to...**combine the land use outcome management approaches and partner with others at CBP to expand our capacity to meet local needs and engage with them...
- **BUT** – to fill the gap –



Filling the Gap – “Ask”

- Advise the USEPA that continued monitoring of high-res land use change through 2034 is needed to support the achievement of multiple outcomes and the Phase 7 model.
- Support the integration of the management strategies for the Land Use Methods and Metrics Outcome and Land Use Options Evaluation Outcome.
- Promote active use of these data, tools and resources by jurisdictions and locals

Convey the urgency of habitat and living resource loss as a result of population increase and land use decisions happening recently and in the near term.

QUARTERLY PROGRESS MEETING

Chesapeake Bay Program



**See you again Summer '23 for
the Healthy Watersheds Cohort!**

Discussion

