

Choptank simulation domain and grid

Richard Tian

Modeling Quarterly Review

10/05/2022

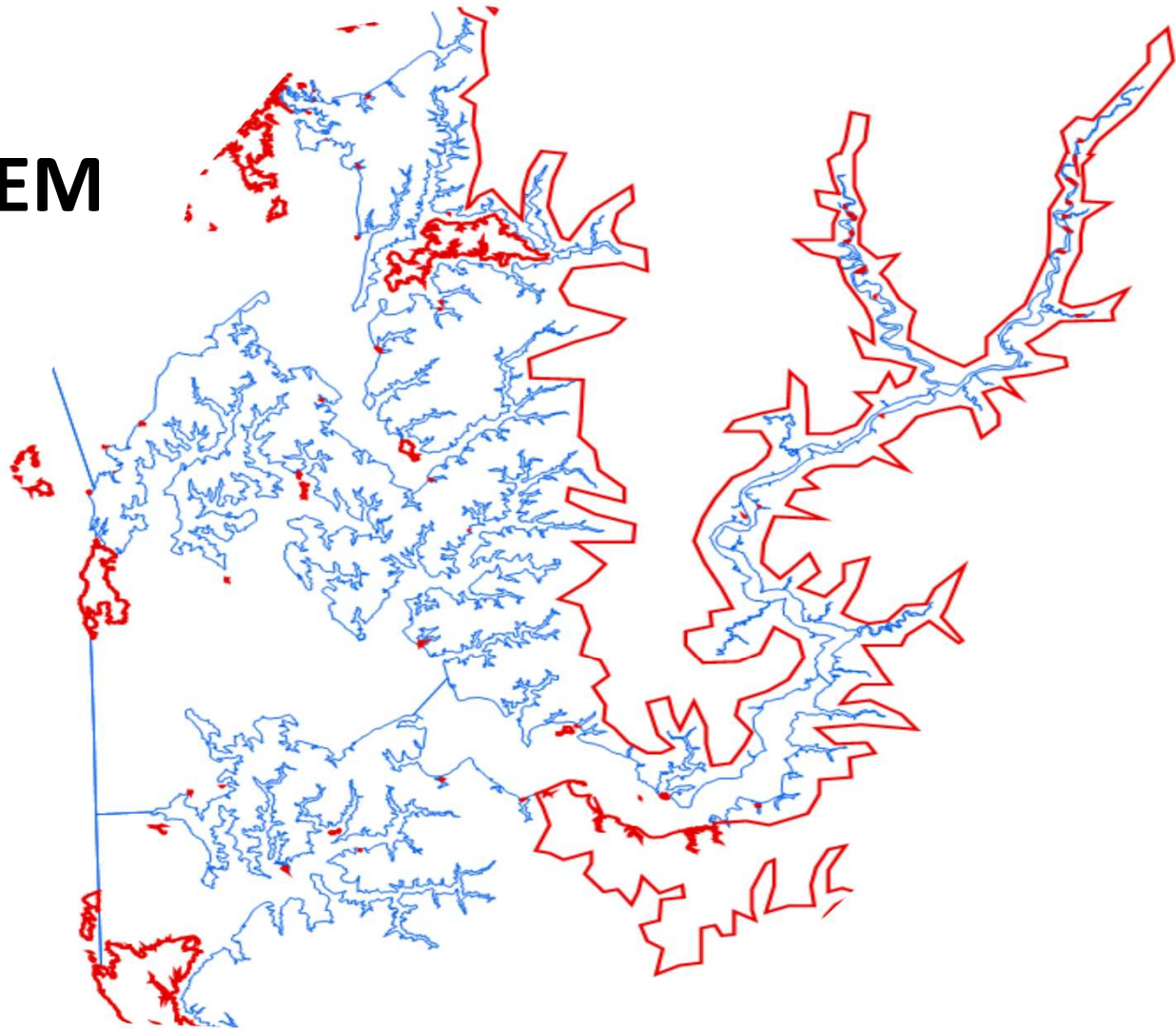
Annapolis

Choptank



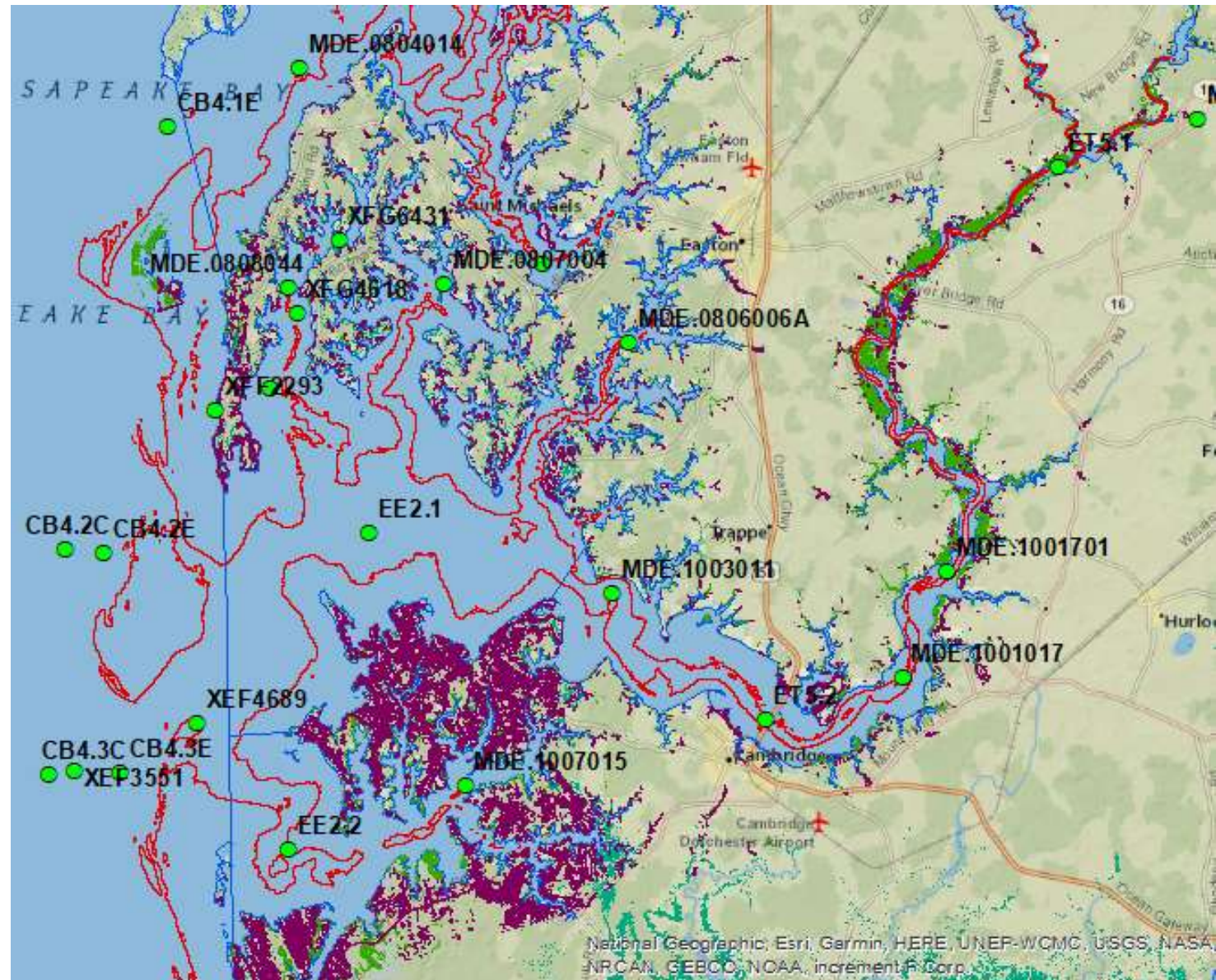
Blue: Coastline

Red: 3 meters DEM



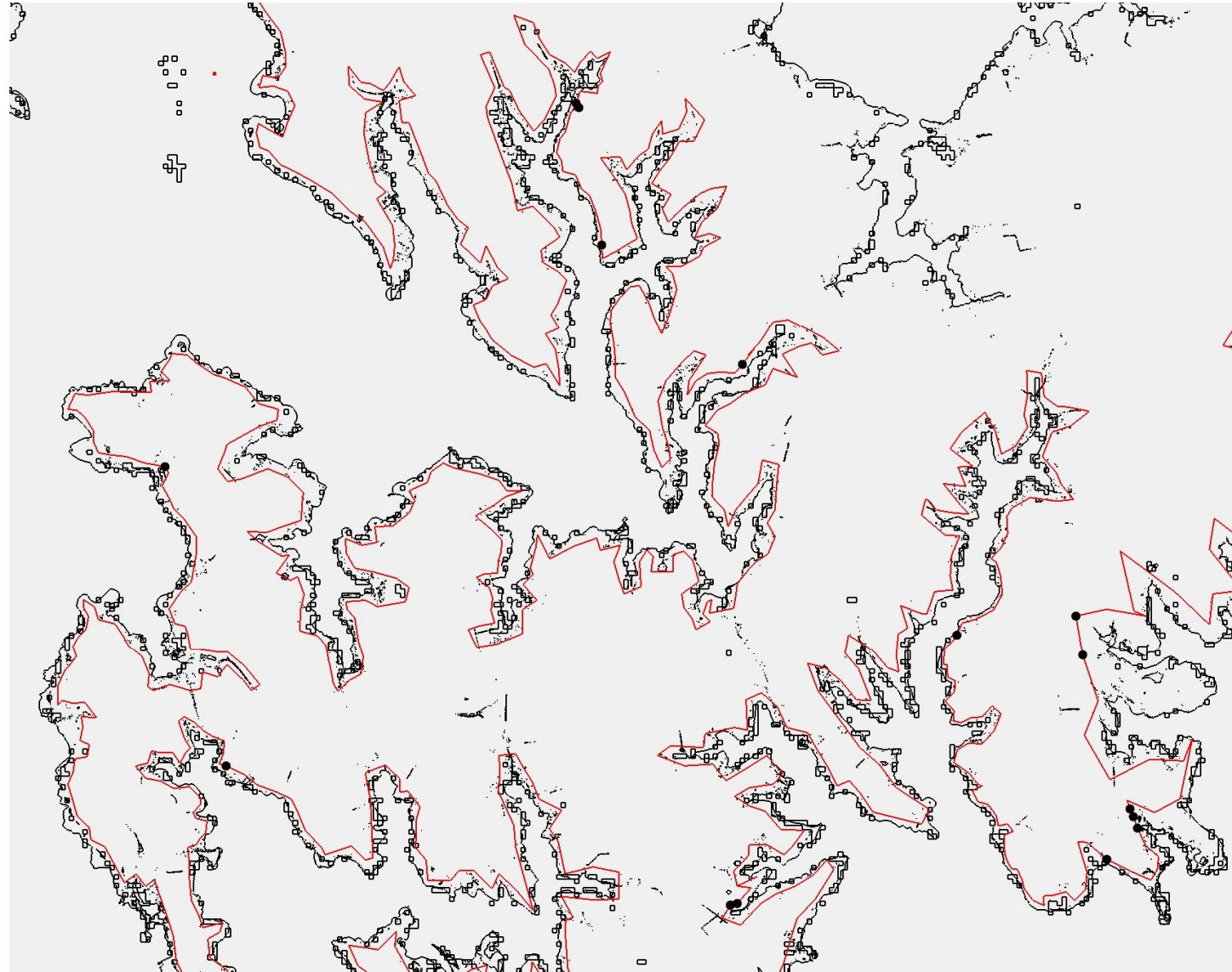
Information

- 5-m bathymetry
- Current coastline
- 1-m DEM
- Current tidal wetland
- 50cm slr wetland
- Monitoring stations



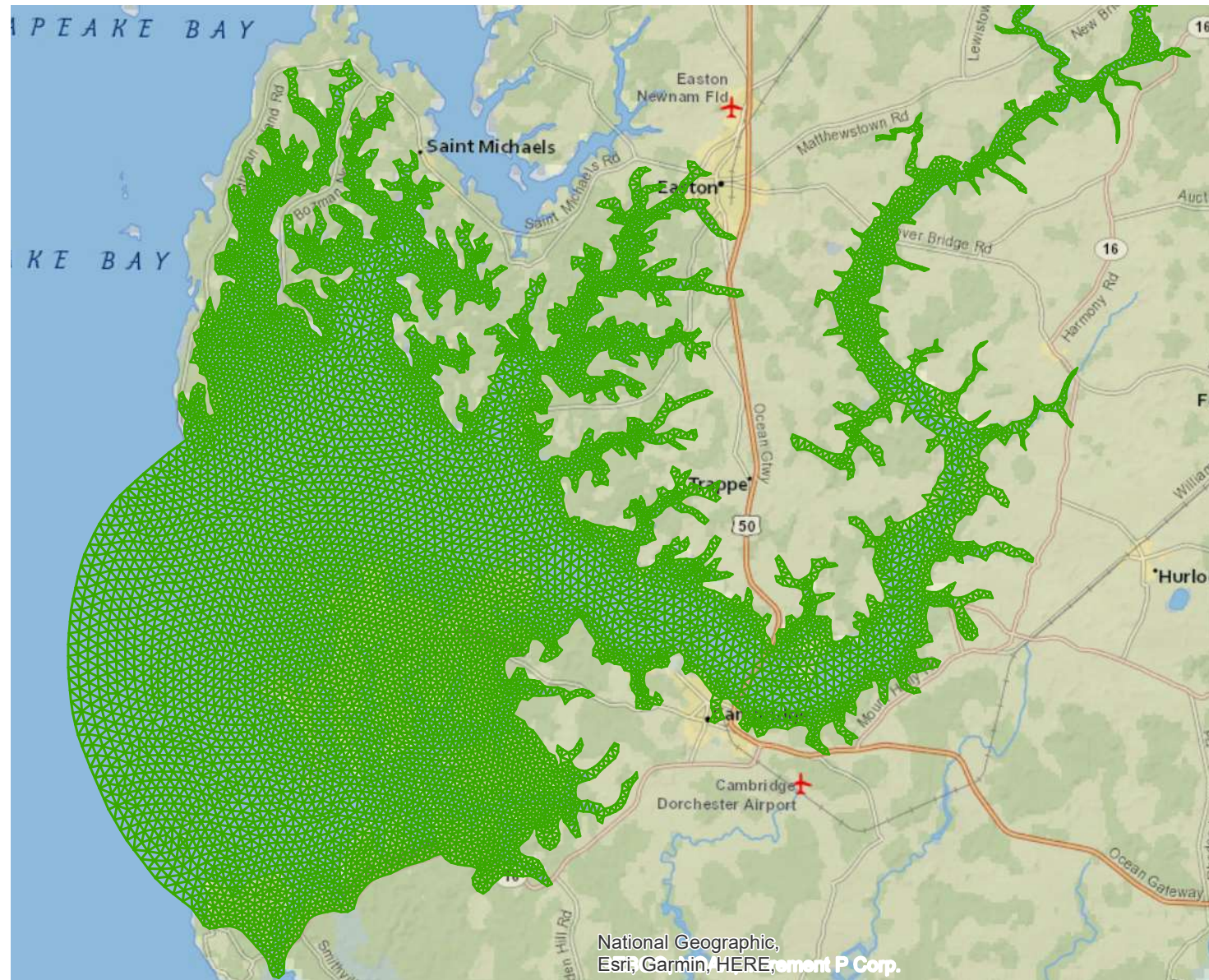
Zoom at the lower estuary

- Houses everywhere
- Inside the simulation domain
- Shoreline hardening?

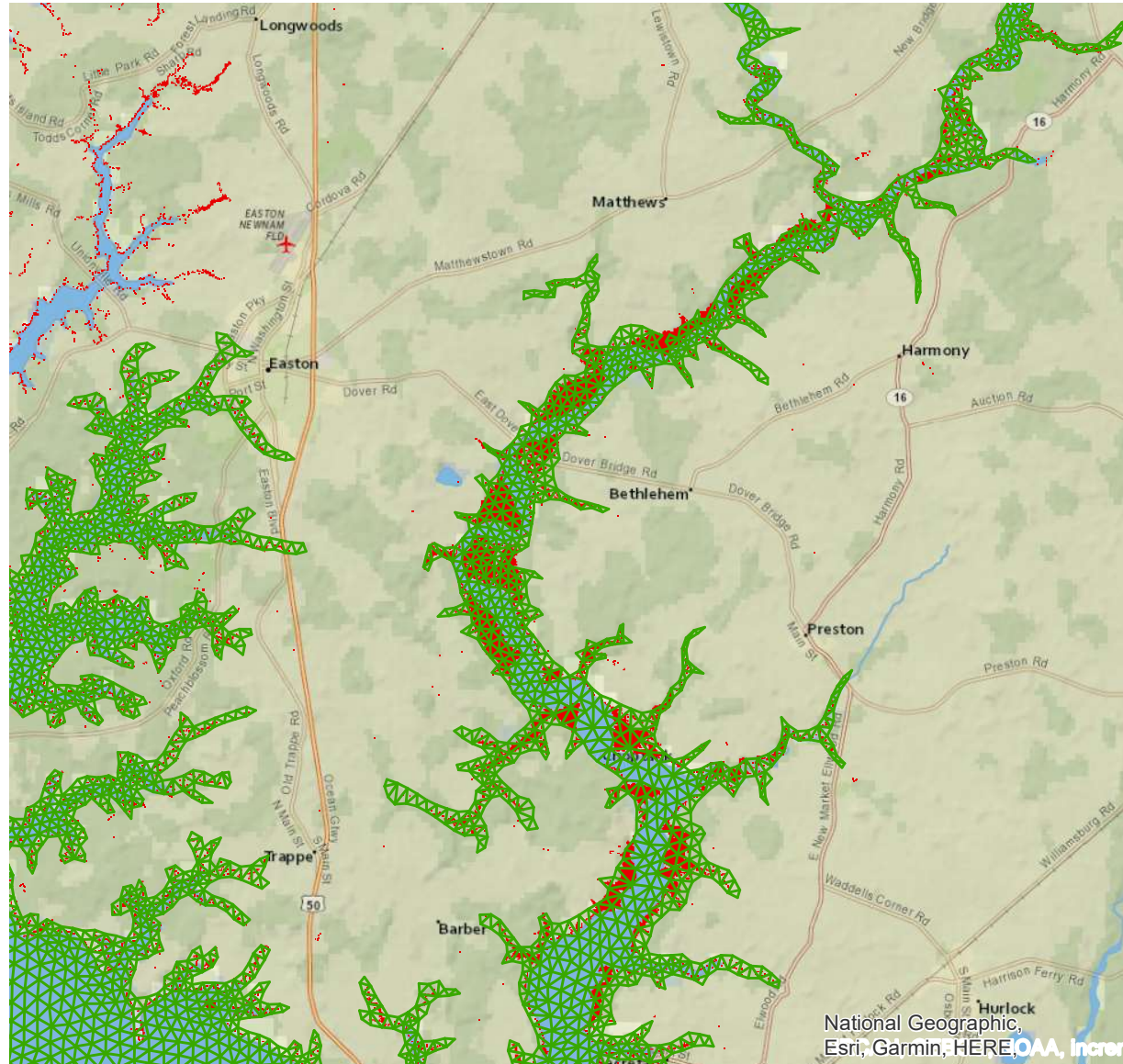


Choptank simulation grid

- 100m upper estuary
- 200m lower estuary
- 300 open boundary?
- 15829 cells
- 9394 nodes

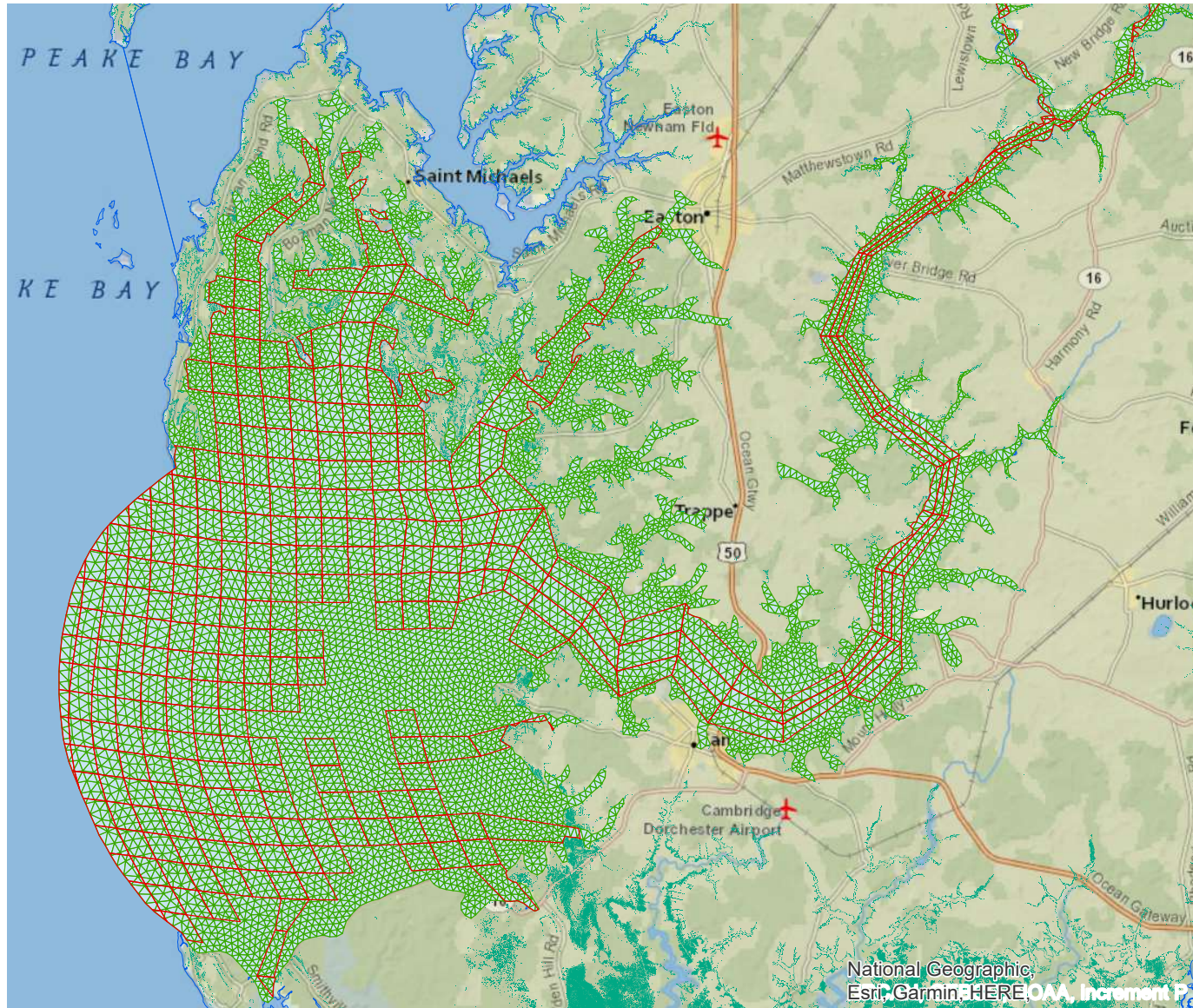


Tidal wetland covered



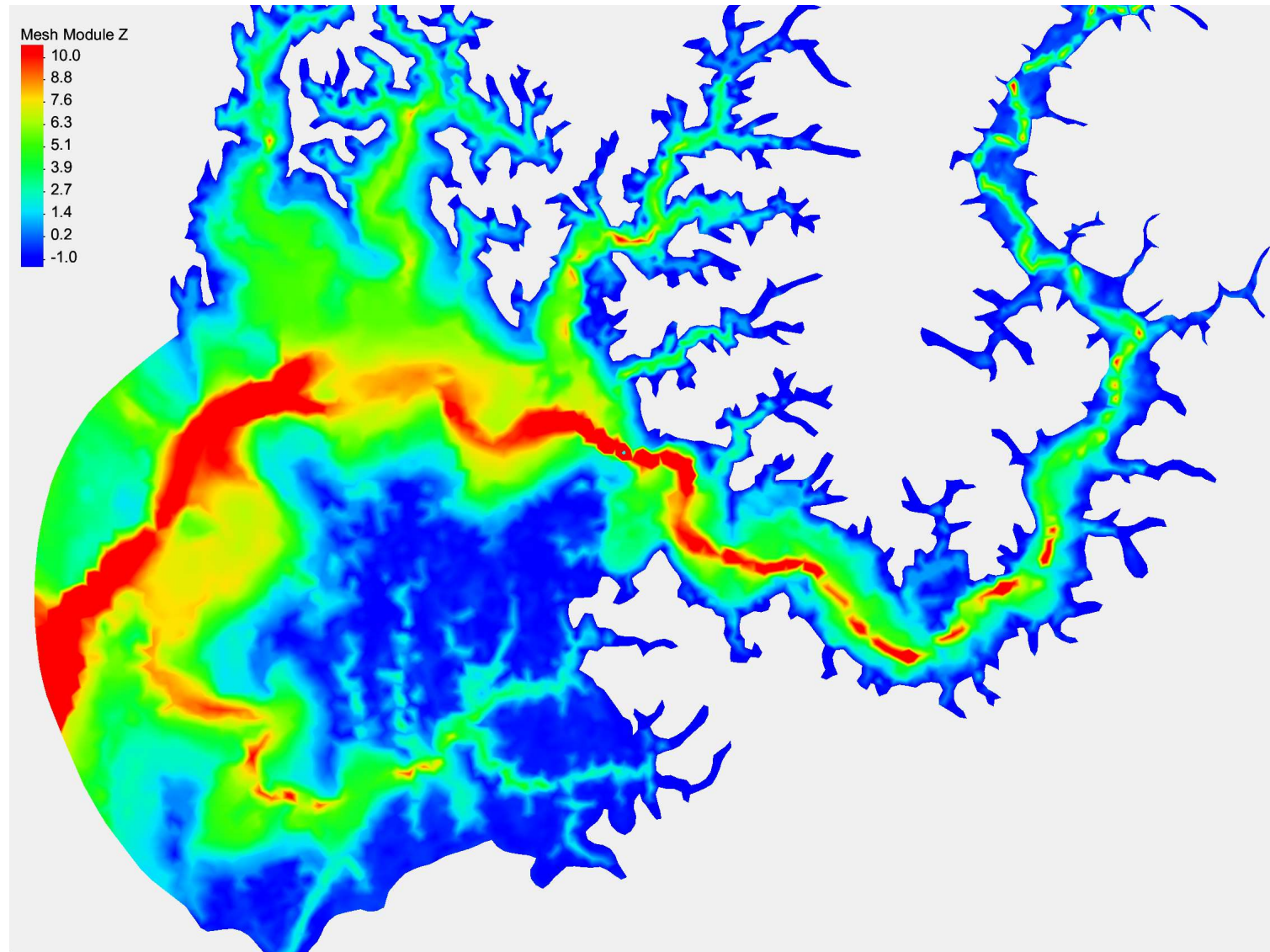
Comparison with CH3D grid

9394 nodes
15829 cells
329 CH3D cell



Bathymetry

- USGS CoNED
- Nearest neighbor
- Up to 26 m
- Question:
What's the typical water depth for tidal wetland?
(google said 50 cm).



Loading points

- 135 CH3D loading cells

