



Black Duck Outcome

*Ben Lewis, VA DGIF
Black Duck Action Team Lead*

Through the Chesapeake Bay Watershed Agreement, the Chesapeake Bay Program has committed to...



Goal: Vital Habitats Goal

Outcome: *By 2025, restore, enhance, and preserve wetland habitats that support a wintering population of 100,000 black ducks, a species representative of the health of the tidal marshes across the watershed.*

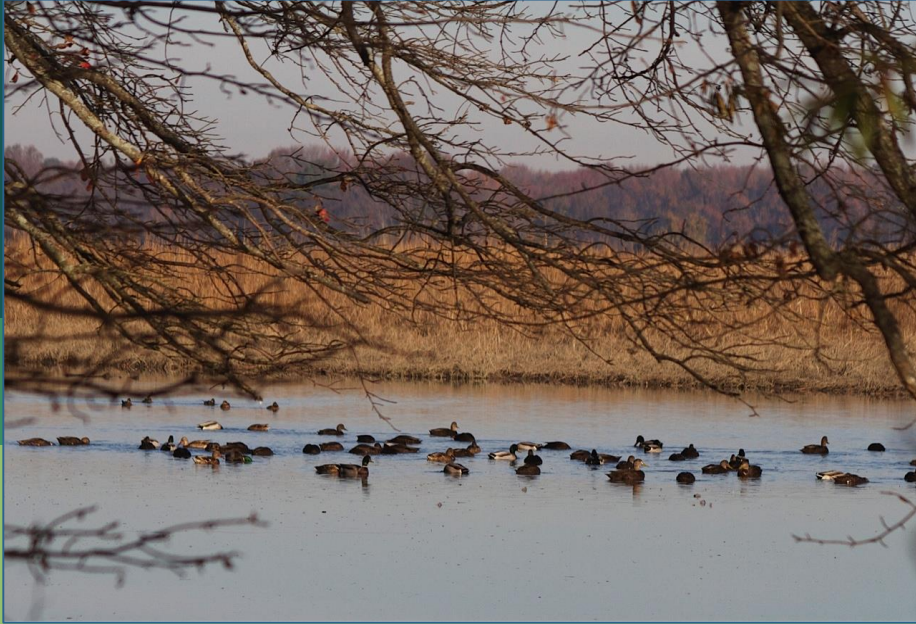
Baseline and Current Condition

- NAWMP Continental Population Goal of 640,000 Black Ducks
- Estimated that the CB watershed could support 100,000
- Mid-Winter Survey
- 2007-2009: 37,158 Black Ducks
- 2009-2011: 47,269 Black Ducks





What We Want



- Adopt habitat based Black Duck Outcome indicator using bioenergetics model/DST
- Continued Partner Participation

1

Setting the Stage:

What are our assumptions?



Logic Behind Our Outcome

Following the Decision Framework:

Factors

- Habitat Degradation
- Scientific Research
- Technical Understanding / Implementation

Current Efforts and Gaps

- Habitat Conservation
- Technical Assistance
- Scientific Research
- Carrying Capacity and Bioenergetics Modeling

Management Approaches

- Habitat Restoration
- Habitat Enhancement and Management
- Habitat Protection
- Other Conservation Actions Benefiting Waterfowl Habitat

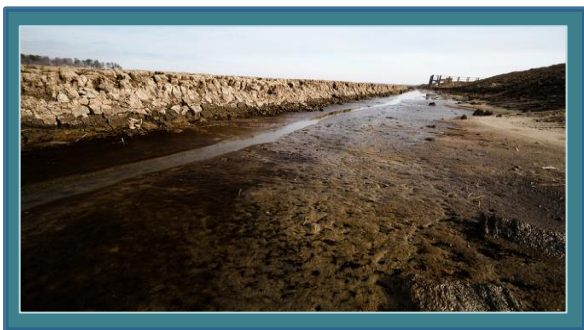
2

Progress:

Are we doing what we said we would do?

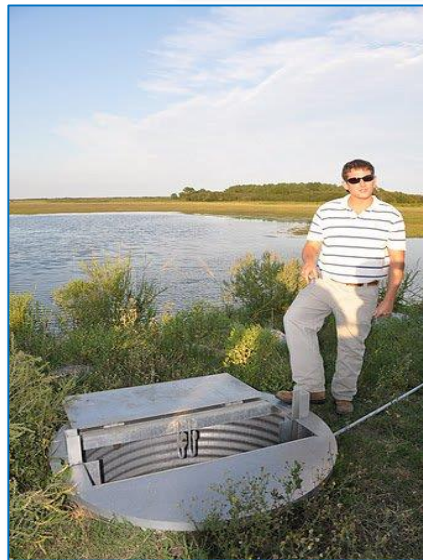


What is our progress?



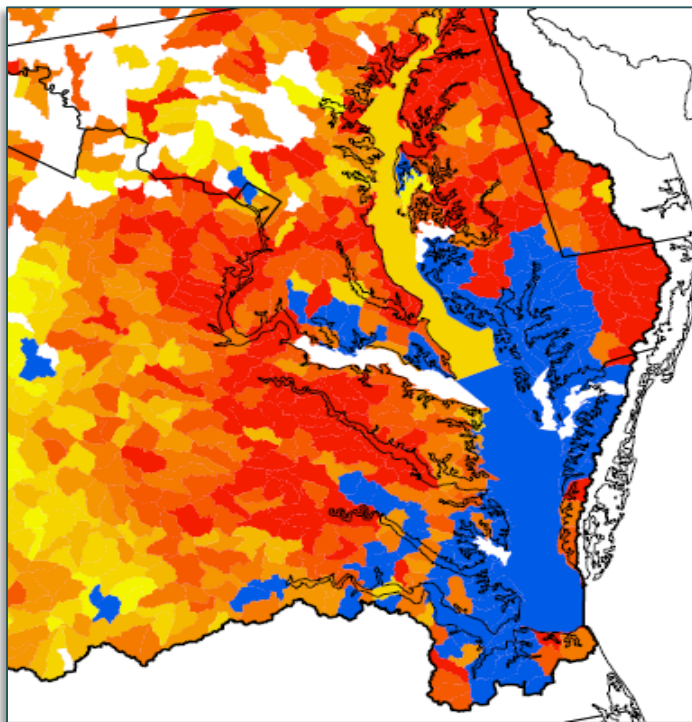
Supporting Restoration, Enhancement, and Conservation Work

- NGO's
- States/Jurisdictions
- Federal Agencies





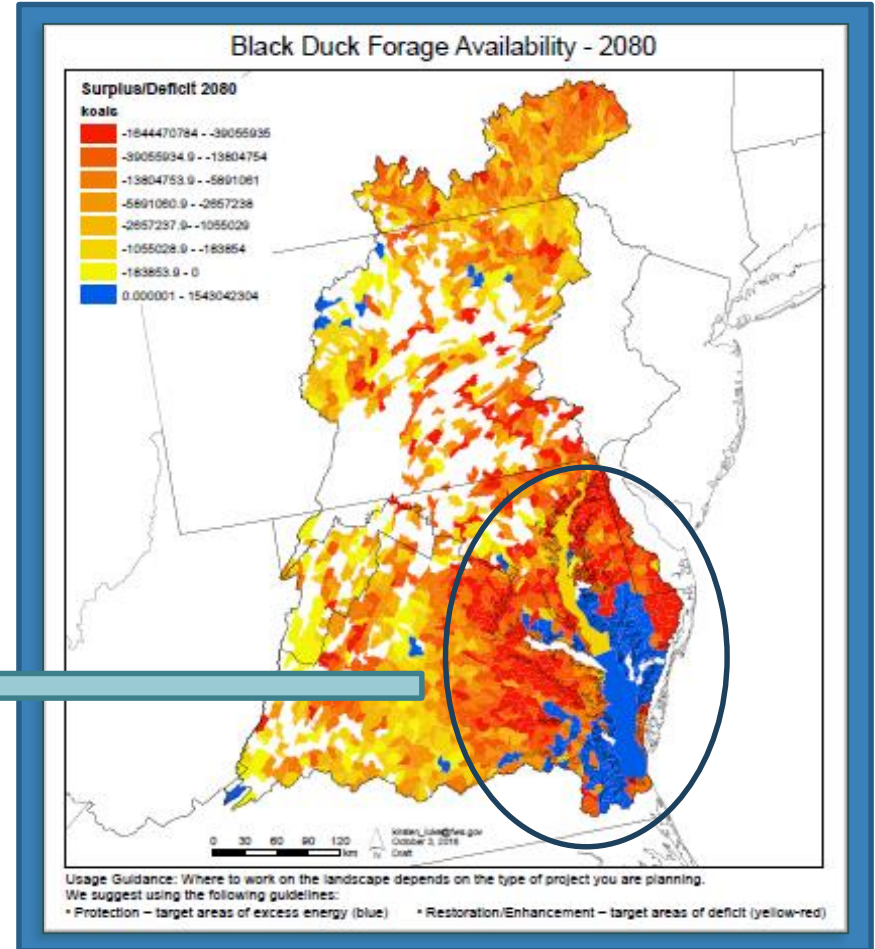
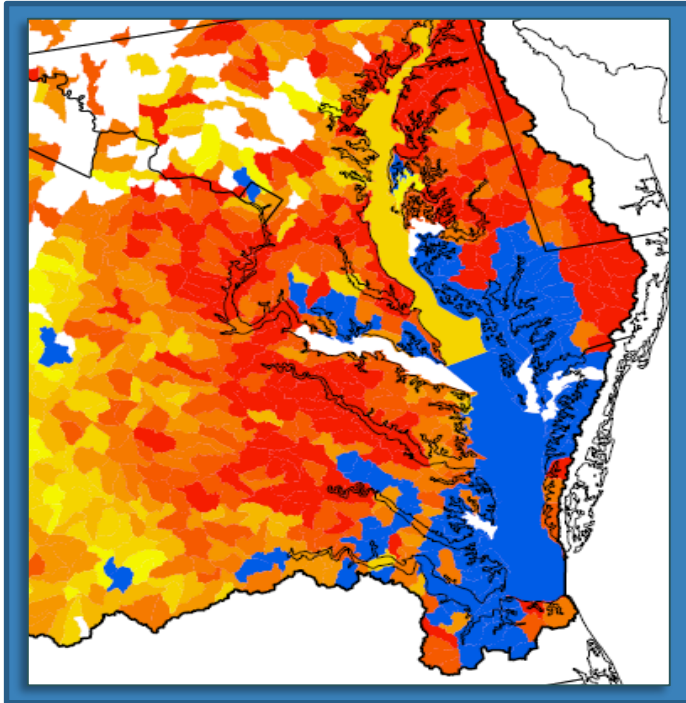
What is our progress?



Bioenergetics model and Black Duck habitat needs under future landscape condition maps complete.



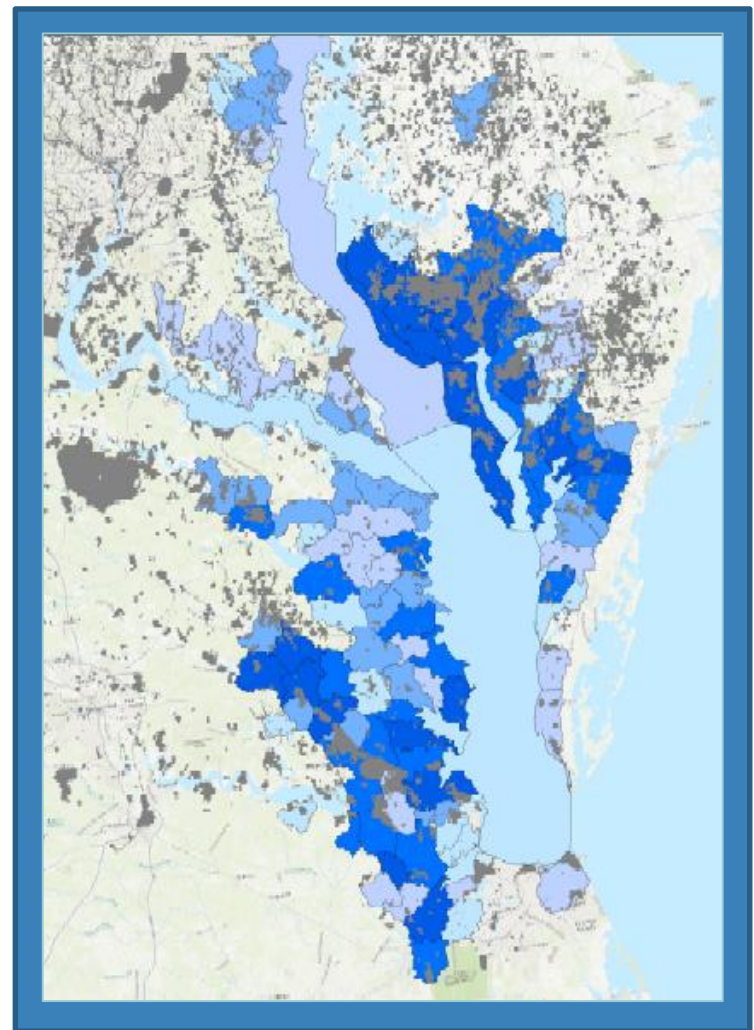
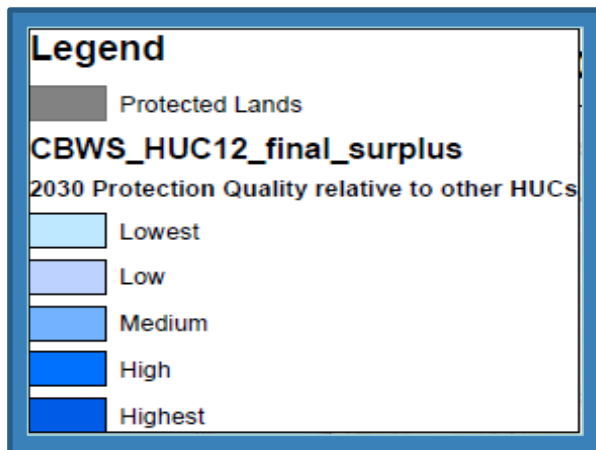
Black Duck Habitat Needs Under Future Landscape Conditions





Are we on track?

Surplus HUC12s and Protected Lands

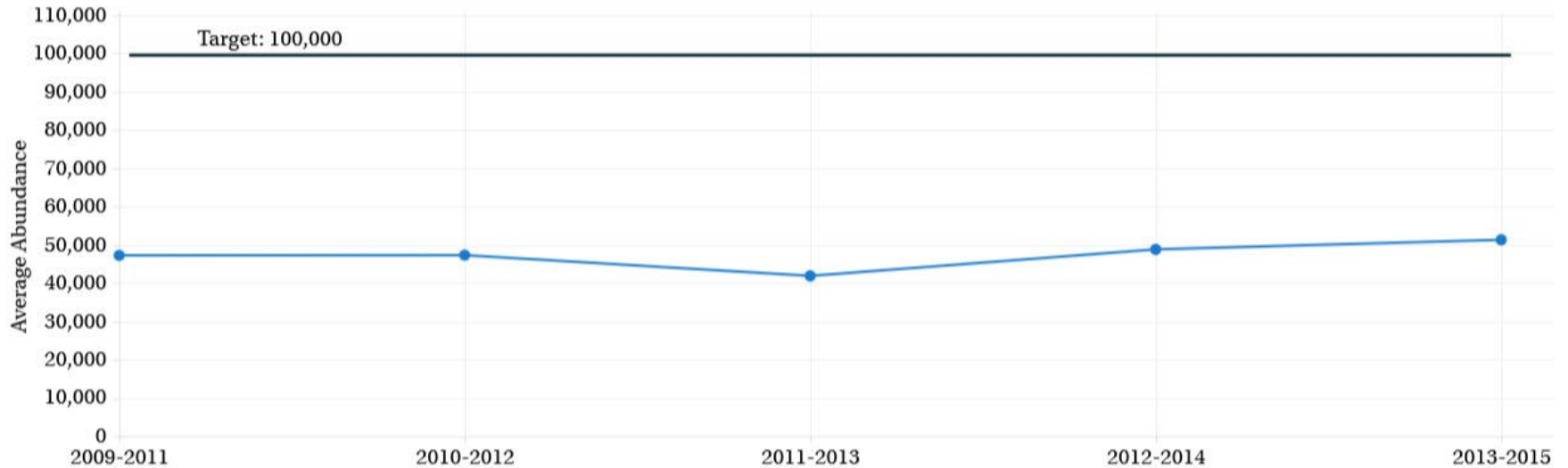




Are we on track?

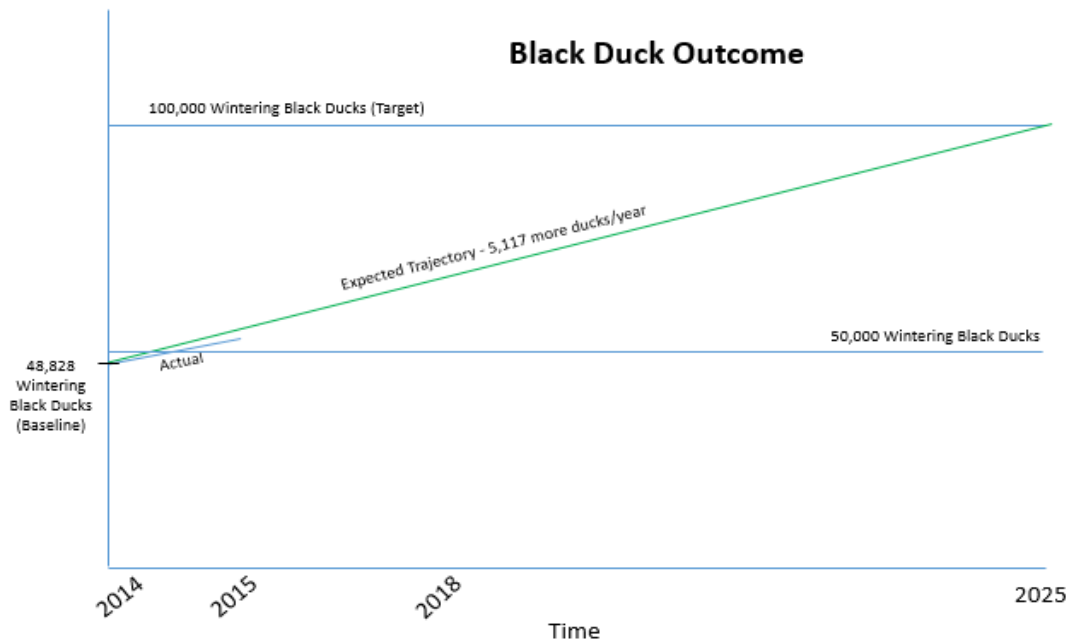
Wintering Black Ducks in the Chesapeake Bay Watershed (2009-2015)

Average black duck abundance as observed during the U.S. Fish and Wildlife Service Mid-winter Waterfowl Survey.





Are we on track?



Indicator Status

- As of 2015, the Black Duck Outcome stands at 51% of it's 100,000 bird goal.
- CBP has not received Chesapeake Bay Watershed population data since 2015 as USFWS no longer maintains survey data.

A habitat based indicator would be more reflective of true outcome progress.



Are we on track?



- Adopt habitat based Black Duck Outcome indicator using bioenergetics model/DST

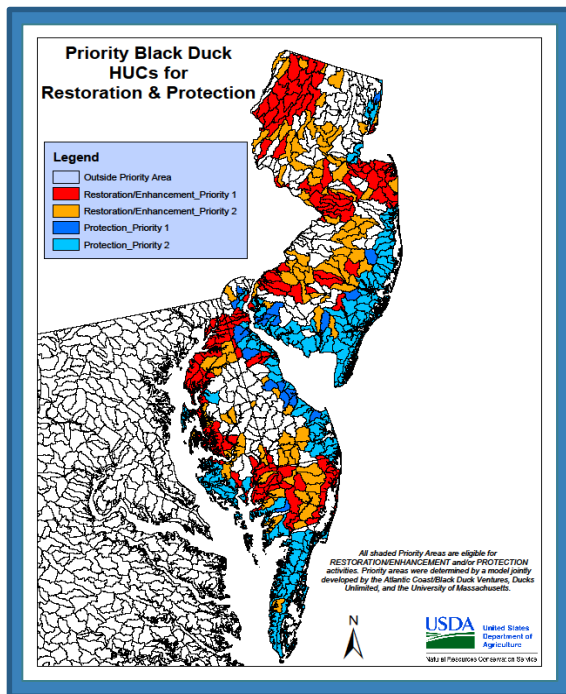


DEPARTMENT OF
**GAME & INLAND
FISHERIES**
CONSERVE. CONNECT. PROTECT.

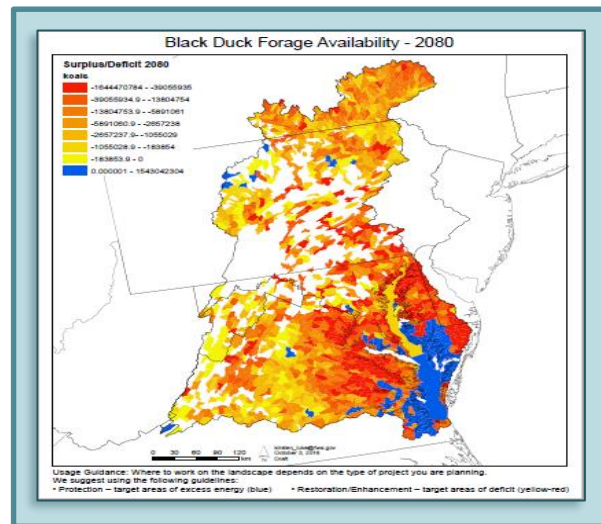




Analysis



Discussion Question 2: Which actions were most critical in progress thus far?



Completion of the bioenergetics model and map outputs.



Analysis

Discussion Question 3: Which actions will be the most critical to your progress in the future? Why?



Using the DST maps to determine the best locations for restoration, enhancement, and management of habitat for black ducks.



Determining Acreage Component to Black Duck outcome. I.e. how many acres of habitat would we need to reach our goal

3

Challenges:

Are our actions having the expected effect?



Challenges



Determining Acreage Goals for Outcome



Getting the DST Map in Applicable Format



Conservation Partner buy in of DST



Funding

4

Adaptations:

How should we adapt?



**Based on what we've
learned, we plan to...**



Incorporate Acreage Component to the Black Duck Outcome



Adopt new habitat based Black Duck Outcome indicator using bioenergetics model/DST



Develop a priority list of HUC12s/state for conservation and restoration (25th Percentile Map)



Improve coordination with partners and local agencies

Agreement Goals and Outcomes



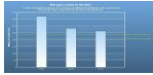
Sustainable Fisheries

- Blue Crab Abundance
- Blue Crab Management
- Oyster
- Forage Fish
- Fish Habitat



Vital Habitats Goal

- Wetlands
- Black Duck
- Stream Health
- Brook Trout
- Fish Passage
- Submerged Aquatic Vegetation (SAV)
- Forest Buffer
- Tree Canopy



Water Quality Goal

- 2017 Watershed Implementation Plans (WIP)
- 2025 WIP
- Water Quality Standards Attainment and Monitoring



Toxic Contaminants Goal

- Toxic Contaminants Research
- Toxic Contaminants Policy and Prevention



Healthy Watersheds Goal

- Healthy Waters



Stewardship Goal

- Citizen Stewardship
- Local Leadership
- Diversity



Land Conservation Goal

- Protected Lands
- Land Use Methods and Metrics Development
- Land Use Options Evaluation



Public Access Goal

- Public Access Site Development



Environmental Literacy Goal

- Student
- Sustainable Schools
- Environmental Literacy Planning



Climate Resiliency Goal

- Monitoring and Assessment
- Adaptation Outcome



What We Want



- Adopt habitat based Black Duck Outcome indicator using bioenergetics model/DST
- Continued Partner Participation

Discussion