

VISUALIZATION OF PHASE 6 MODEL CALIBRATION INPUT DATA

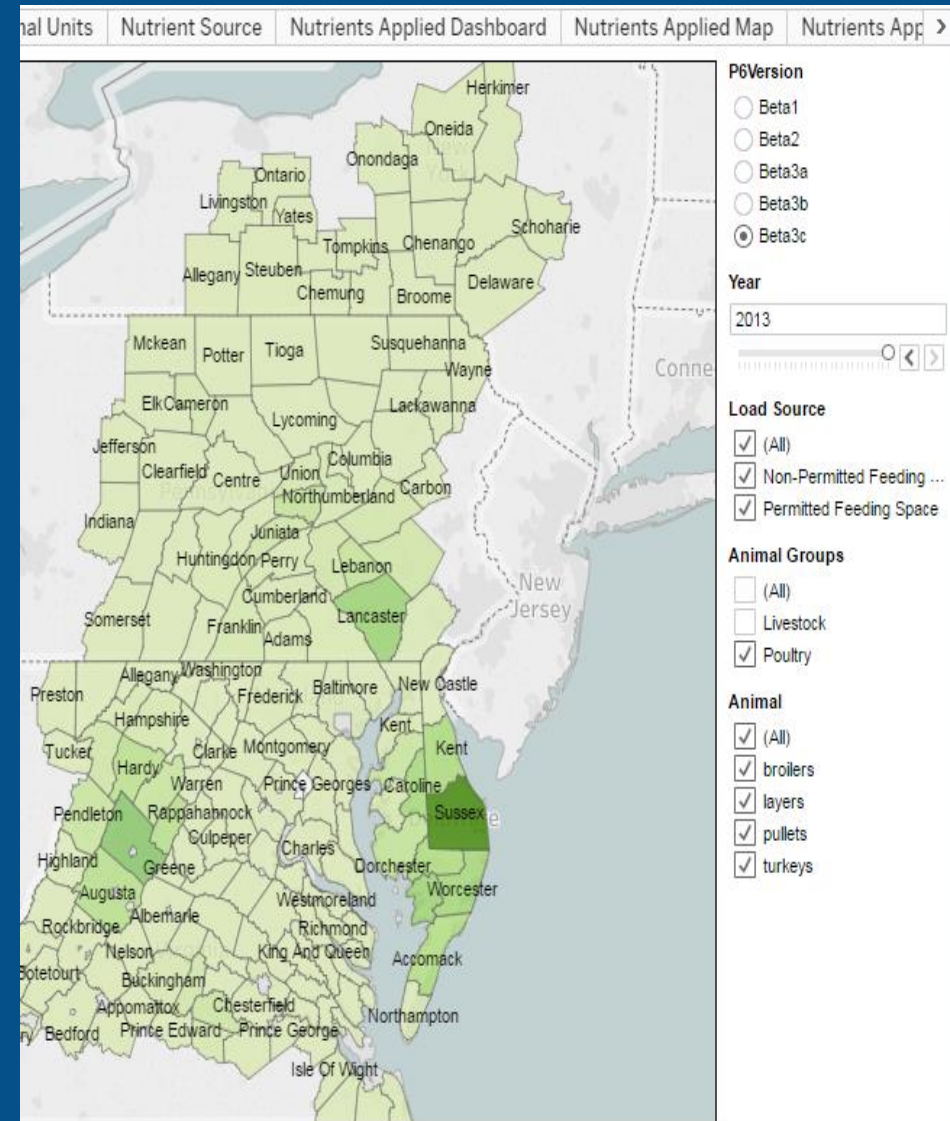
Water Quality Goal Implementation Team

October 24, 2016

Olivia Devereux

REQUEST FOR DATA VISUALIZATION APPLICATION

- The Water Quality Goal Implementation Team requested a tool at its March 14, 2016 meeting
- Purposes:
 - Facilitate partnership review of each beta version
 - Eliminate jurisdictions' duplication of efforts
 - Facilitate local jurisdiction ground-truthing of data by providing easy access to data
- Functionality:
 - Summarize data for each beta version of the Phase 6 calibration to facilitate analyses
 - Filter data to highlight the most important elements
 - Drill down to more detailed information, e.g.: specific land use or animal type or county, state

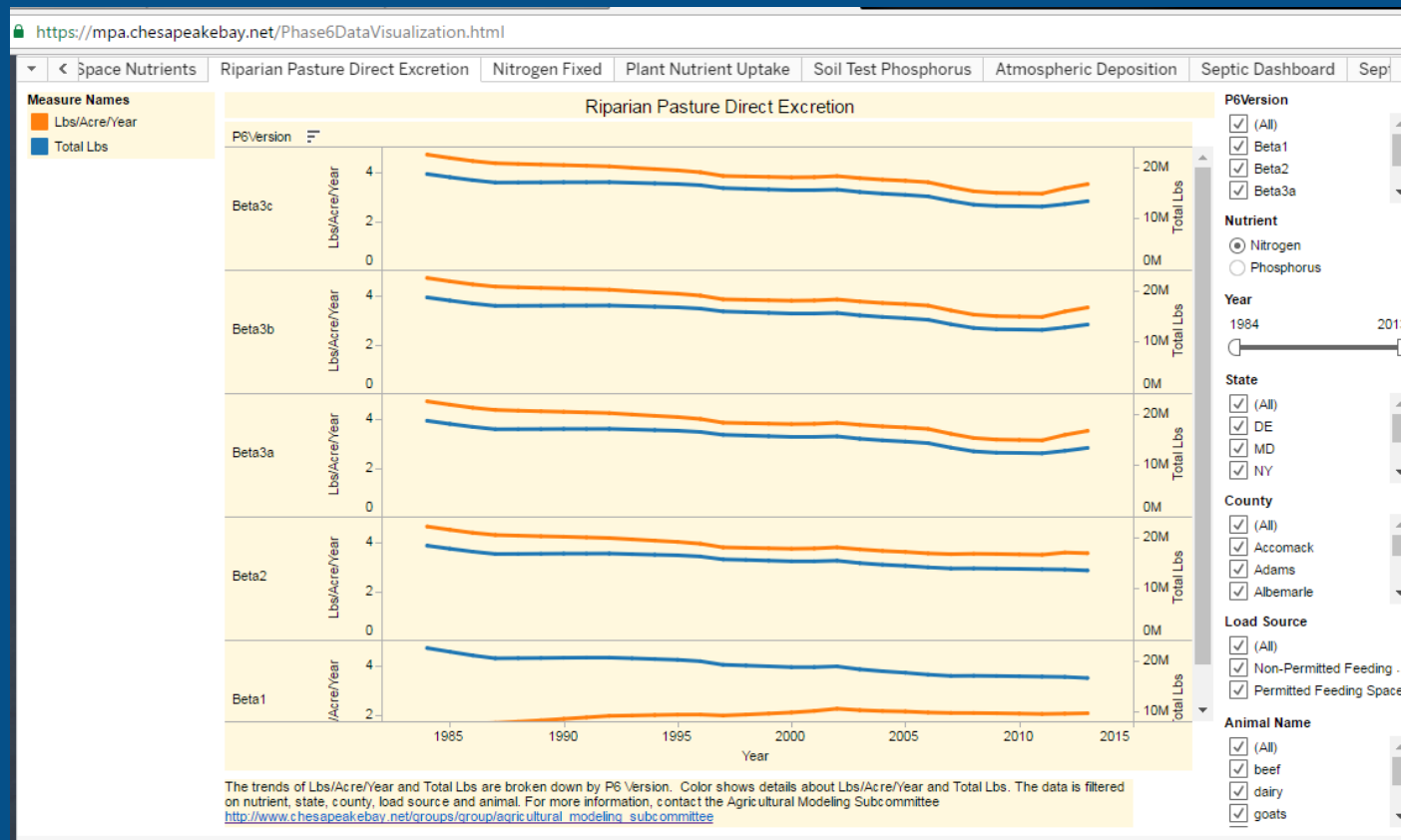


DEVELOPMENT PROCESS

- Advisory group mocked up the data that would be most useful and provided feedback
 - Bill Angstadt, Delaware Maryland Agri-business Association
 - Karl Berger, Metropolitan Washington Council of Governments
 - Chris Brosch, Delaware Department of Agriculture
 - James Davis-Martin, Department of Environmental Quality
 - Clint J. Gill, Delaware Department of Agriculture
 - Lindsey Gordon, Chesapeake Bay Program, CRC
 - Mukhtar Ibrahim, Metropolitan Washington Council of Governments
 - David Montali, West Virginia Department of Environmental Protection
 - Alisha Mulkey, Maryland Department of Agriculture
 - Gregorio Sandi, Maryland Department of the Environment
 - Tanya Spano, Metropolitan Washington Council of Governments
- After multiple iterations, application was launched on July 5, 2015
- Soft launch with notices going out through workgroups as it was relevant to their discussions

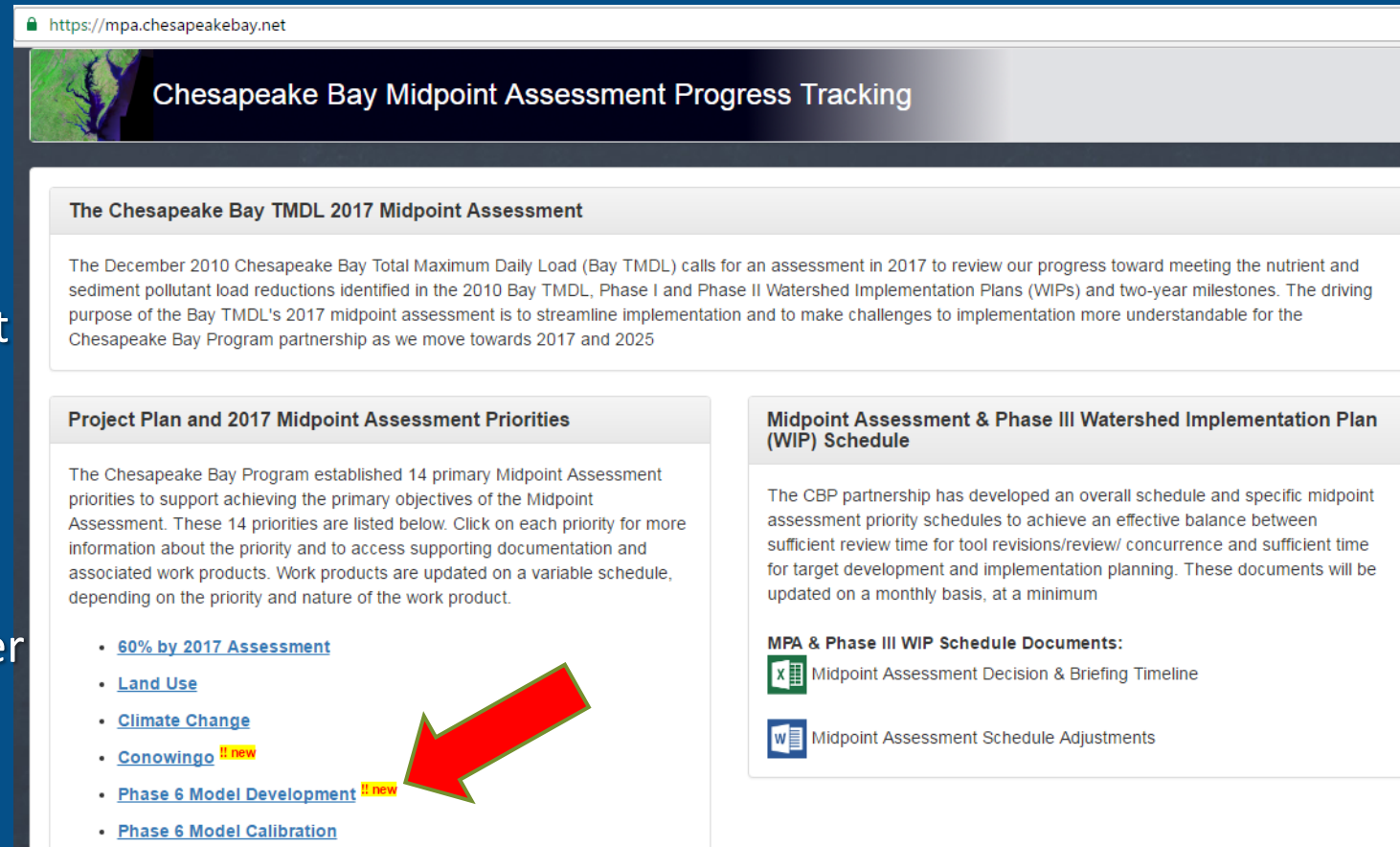
UPDATES AND ENHANCEMENTS

- Updates are made when the new Beta versions are released
- Enhancements are made on a rolling basis in response to comments and requests from users
- Next enhancement is adding model calibration output for the land-river segments



ACCESS

- Anyone can access and use the data visualization application
- Access is available directly from the Midpoint Assessment website under Phase 6 Model Development
- Also available on the Modeling Website under Projects and Resources, Phase 6 Beta Draft Documentation



<https://mpa.chesapeakebay.net>

Chesapeake Bay Midpoint Assessment Progress Tracking

The Chesapeake Bay TMDL 2017 Midpoint Assessment

The December 2010 Chesapeake Bay Total Maximum Daily Load (Bay TMDL) calls for an assessment in 2017 to review our progress toward meeting the nutrient and sediment pollutant load reductions identified in the 2010 Bay TMDL, Phase I and Phase II Watershed Implementation Plans (WIPs) and two-year milestones. The driving purpose of the Bay TMDL's 2017 midpoint assessment is to streamline implementation and to make challenges to implementation more understandable for the Chesapeake Bay Program partnership as we move towards 2017 and 2025

Project Plan and 2017 Midpoint Assessment Priorities

The Chesapeake Bay Program established 14 primary Midpoint Assessment priorities to support achieving the primary objectives of the Midpoint Assessment. These 14 priorities are listed below. Click on each priority for more information about the priority and to access supporting documentation and associated work products. Work products are updated on a variable schedule, depending on the priority and nature of the work product.

- [60% by 2017 Assessment](#)
- [Land Use](#)
- [Climate Change](#)
- [Conowingo](#) !! new
- [Phase 6 Model Development](#) !! new
- [Phase 6 Model Calibration](#)

Midpoint Assessment & Phase III Watershed Implementation Plan (WIP) Schedule

The CBP partnership has developed an overall schedule and specific midpoint assessment priority schedules to achieve an effective balance between sufficient review time for tool revisions/review/ concurrence and sufficient time for target development and implementation planning. These documents will be updated on a monthly basis, at a minimum

MPA & Phase III WIP Schedule Documents:

- [Midpoint Assessment Decision & Briefing Timeline](#)
- [Midpoint Assessment Schedule Adjustments](#)

<https://mpa.chesapeakebay.net/Phase6DataVisualization.html>

DEMONSTRATION

<https://mpa.chesapeakebay.net/Phase6DataVisualization.html>