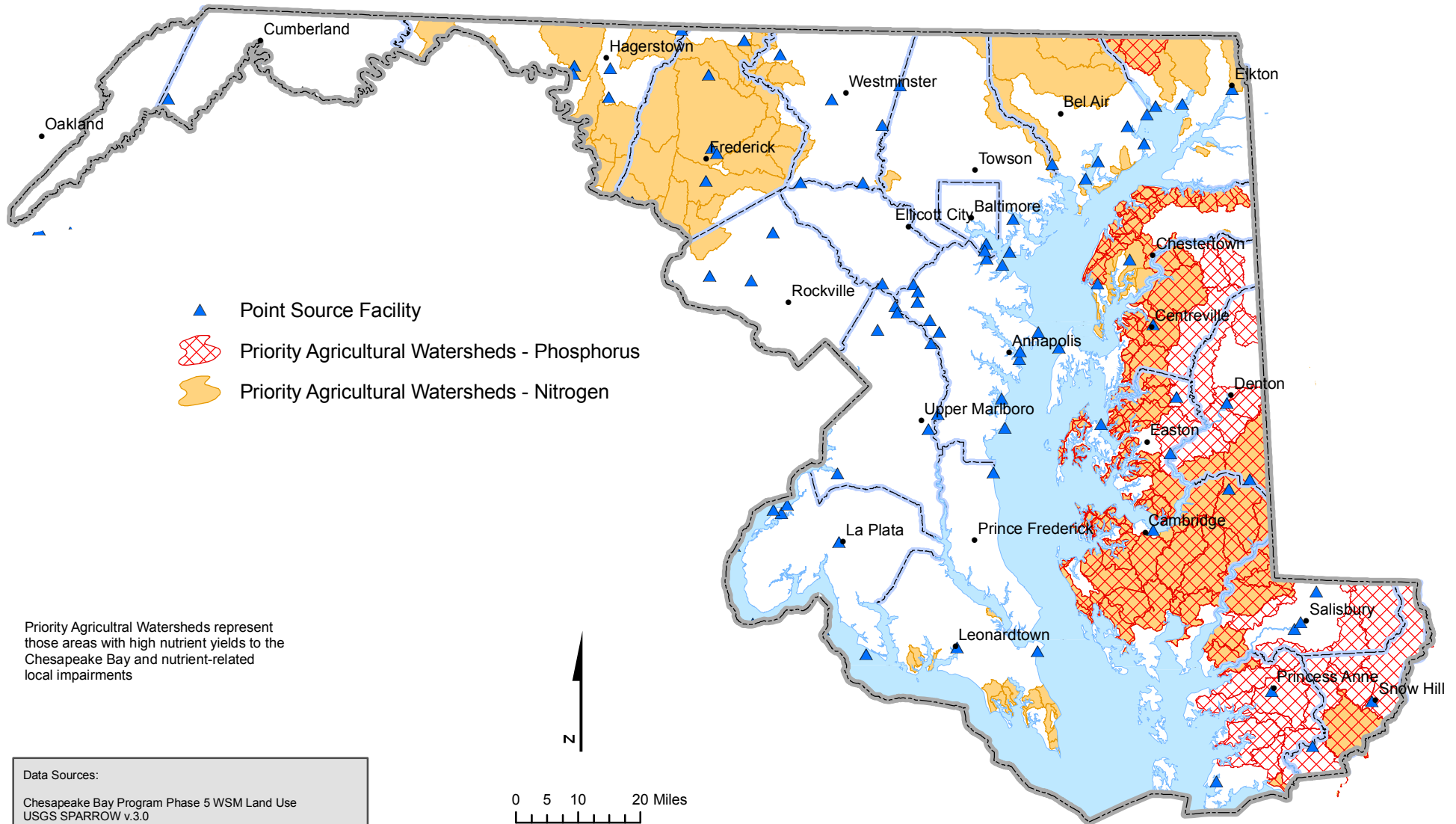


Point Sources and Priority Agricultural Watersheds

Chesapeake Bay Watershed within Maryland



Priority Agricultural Watersheds represent those areas with high nutrient yields to the Chesapeake Bay and nutrient-related local impairments

Data Sources:

Chesapeake Bay Program Phase 5 WSM Land Use
USGS SPARROW v.3.0
State 303d Data provided by State Contacts and EPA Region 3
Chesapeake Bay Program Point Source Data Base

For more information, visit www.chesapeakebay.net
Disclaimer: www.chesapeakebay.net/termsofuse.htm