



## Climate Resiliency Workgroup Meeting Minutes

July 18, 2022

1:30-2:30 PM EST

### Event webpage:

[https://www.chesapeakebay.net/what/event/climate\\_resiliency\\_workgroup\\_meeting\\_july\\_2022](https://www.chesapeakebay.net/what/event/climate_resiliency_workgroup_meeting_july_2022)

*This meeting will be recorded for internal use to assure the accuracy of meeting notes.*

### Action Items:

- For GIT-Funded Marsh Adaptation Project: Connect with Jessica Rodriguez to discuss the format of the Commander's Conference and how that could inform the format of the GIT-Funded Marsh Adaptation workshop
- For future meetings: Request that CRWG members help create connections with technical experts that have researched carbon sequestration of relevant best management practices and can present their findings to the workgroup.

**1:30 PM**      **Welcome and Opening Remarks – Mark Bennett, Chair (USGS) & Julie Reichert-Nguyen, Coordinator**

### Summary and Discussion

Julie welcomed the workgroup and reviewed the objectives for the meeting, which were to better understand the workgroup members' organizational priorities regarding climate resiliency and how the workgroup actions can align with these priorities. This meeting topic is in preparation for the workgroup's next Strategic Review Systems (SRS) cycle that begins in August. SRS helps workgroups better understand what progress has been made toward the actions outlined in the two-year workplan and then helps develop the next two-year workplan. Mark Bennet added that this meeting is to ensure that the workgroup's next two-year plan is capturing the priorities of the workgroup. Additionally, he added that this meeting would be a good opportunity to brainstorm about themed and technical meeting that would be helpful for workgroup members. Julie then set the stage for the meeting discussion.

**1:40 PM**      **Discussion to share and learn about Climate Resiliency Workgroup (CRWG) members & interested parties' climate resiliency priorities and goals**

*As we move into a new SRS cycle, we are hoping to gather information about CRWG members' and interested parties' organizational climate resiliency priorities. This discussion will help inform development of the next 2-yr workplan for the CRWG. Below are some guiding questions for the discussion:*

- *What are your organization's climate resiliency priorities related to water quality, habitats, living resources, and/or communities?*
- *Which ones do you think the Climate Resiliency Workgroup could help support?*

### Summary and Discussion

The workgroup members and interested parties were split into two breakout rooms. During the breakout sessions, the groups were asked to think about two questions: (1) what are your organization's climate resiliency priorities related to water quality, habitats, living resources, and/or communities? And (2) which of these priorities do you think the CRWG could help support? The meeting attendees had 20 minutes to discuss the questions. Responses were recorded in a Jamboard (attached at the end of the minutes).

Results of the Jamboard sessions from both groups are below. Upon the conclusion of the breakout sessions, both groups reported-out their key takeaways from the discussion. The report out aimed to identify the priorities that resonated with attendees. Jamileh shared the key takeaways from group one's discussion (Jamboard Slide 1). During the breakout session, group one identified various organizational priorities that were of interest to many of the attendees. These included helping local governments integrate climate change adaptation into water resource planning, addressing saltwater intrusion into aquifers and salinization, and working on large-scale restoration planning, strategies, and implementation. The attendees from the Department of Defense also shared a number of organizational priorities that could align with workgroup efforts; these include continuing to work on design standards for stormwater and buffering military installations through restoration and conservations (e.g. REPI funding) and working with off-base partners to provide protection to lands adjacent to military installations. In the image of the Jamboard below, asterisks on the priority indicate those that resonated with multiple attendees. Additionally, during group one's discussion, Taryn Sudol highlighted the need for a future CRWG meeting to invite funders in the resiliency/restoration/conservation space to discuss funding opportunities, what types of work they are looking for, and how to increase the chance for success. This would help not only connect workgroup members with funders and funding opportunities, but help them increase the success of submitted proposals.

Jason Dubow then commented on additional ways the workgroup could support the members. He mentioned that there may be an opportunity to bring together government organizations at different scales (e.g. local, state, federal) to share information and expertise and to avoid duplication of efforts. He commented that there could be a way for the workgroup to facilitate these sorts of connections. Julie then posed the idea of having a meeting theme about bringing together representatives from the different scales of government who are working in the same

space to share information and expertise. Mark Bennet added that there could be a meeting that would bring together groups that have been working and have had some success in implementing resiliency projects to share their knowledge. He gave the example of Hampton Roads Planning District Commissions, which has worked alongside many state and local agencies as well as the military bases within that region to coordinate resilience efforts, especially pertaining to flooding. He then added that the workgroup could host another themed meeting that would focus on funding opportunities and to assist with making connections with either funders or people who have been successful in securing similar funding opportunities.

Jessica Rodriguez replied to Jason's point highlighting an example of bringing in different levels of government to the table. The DoD Chesapeake Bay Program is hosting a Commander's Conference, which brings together all the installation commanding officers within the Bay watershed to discuss DoD priorities and their progress on their commitments. This conference will have a session that is focused on bringing in non-DoD participants from federal, state, and local government and non-governmental organization partners. Another portion of the conference will be to take the opportunities for collaboration that were identified and building upon them (e.g. taking planning studies that were conducted and developing actionable recommendations from them) and then connecting these opportunities with funding sources. She posited that this may be a format that the workgroup could adopt.

Julie followed up by mentioning the current efforts that are focused on connecting partners to funding opportunities. This August, the Habitat Goal Implementation Team is hosting a wetland outcome attainability workshop where they will be identifying funding sources to help accelerate the achievement of their outcome in the Chesapeake Bay Watershed Agreement. Julie is also coordinating with other various wetland resiliency efforts to ensure that they are not duplicative of each other. From these conversations, she states that the workgroup can identify what is missing from these conversations; an example includes not looking at these efforts with a climate resiliency lens. She then highlighted the current GIT Funded project addressing Marsh Adaptation and the workshop that is funded through this will be focused on the kinds of conversations that Jessica mentioned earlier. Julie mentioned connecting with Jessica to learn more about the structure of the Commander's Conference, which could be helpful for this marsh adaptation workshop.

Julie then reviewed the main points that Group 2 discussed from their breakout session (Jamboard Slide 2, see below). She said that there were some similar themes around making connections across partners doing similar work. An example highlighted by Molly Hassett discussed potential collaboration with the Forestry Workgroup to assess the vulnerability of urban and non-urban tree species, climate change impacts, increasing forests, and reforestation. She mentioned that there could be potential to work with the Forestry Workgroup on some collaborative projects. There was also talk of integrating our climate adaptation work in different local government plans (e.g. water resource plans). Another comment highlighted connecting with the Mid-Atlantic RISA (Regional Integrated Sciences and Assessments) program who prioritizes climate resiliency projects by connecting data to place-based decisions. Julie mentioned that this might be something the workgroup can reference

when looking at opportunities in particular areas (e.g. using place-based guidance for projects). An example given was connecting place-based analyses in the Middle Peninsula, VA. Lena Easton commented that the RISA program is focusing primarily in coastal VA. The information generated could help inform next steps for climate resiliency projects, potentially in places in the Middle Peninsula, VA.

Julie reminded folks that the CRWG is not a large workgroup and we have limited staff resources, so we need to keep that in mind as we select new actions for the next work plan. Additionally, there is room for collaboration and cross-coordination with other workgroups to help make progress on the workgroup actions. Julie then moved on to talking about emerging meeting themes from the discussions (Jamboard Slide 3). Highlighted multiple times was hosting a meeting to connect funding opportunities with partners working within the climate resiliency space and sharing information about how to successfully apply for funding. Another meeting theme was bringing different scales of government working in the same space together to talk about how they best maximized their resources and to share lessons learned. Workgroup members also mentioned having a meeting focused on technical work or GIT-funding on the development of a standardized method for calculating carbon sequestration from urban BMPs. Mark added to this idea saying that there's a CRWG meeting in the works that will bring in researchers like Neil Ganju (USGS) to talk about the wetlands/marsh mapping project they are currently conducting. Mark mentioned that there might be an opportunity to explore how these tools can be utilized to inform carbon sequestration calculations. Mark stated that the workgroup can invite researchers who have already done this sort of work to a meeting as a means of facilitating information exchange. Mark then asked the meeting attendees if they could provide names of technical experts that the workgroup can invite to future meetings to help with exchanging information on quantifying carbon sequestration of relevant BMPs.

Jason mentioned, in regard to the marsh resiliency work that is being done, that it would be beneficial to understand/determine "what is good enough in terms of marsh migration?" to better understand if the work that is being done is sufficient. Julie responded that this would be like translating the information about marsh migration/resiliency into a goal, addressing what can be realistically accomplished. And in regard to the climate model for the TMDL, does the model meet what is needed for the load reductions to be possible? Julie mentioned that there would need to be some thought put into how to structure these conversations, but would make for an interesting themed meeting. This could be translated into creating adaptation indicators that would help track progress towards the adaptation outcome. Mark mentioned that this type of work considers marsh migration in terms of risk and the cost of doing the work. He mentioned that the maps by Neil Ganju and his team will help determine how this risk varies spatially. There is a need to consider which locations will have the best chances of success. There will be a themed meeting in October that will invite Neil and his team as well as The Nature Conservancy to talk about how they have integrated different data to create resilience metrics.

Julie wrapped up by saying that this is a good first step as the workgroup begins the SRS process

this coming August. The topics discussed today will help inform the workplan actions moving forward. For the August meeting, we will review the progress made on the current workplan actions and discuss what worked and did not work. These conversations will help aide in the development of the next 2-yr workplan.

## **2:25 PM      Wrap-up and announcements**

### *Announcements and Opportunities*

- The Department of Defense (DoD) has announced their [FY2023 Readiness and Environmental Protection Integration Program](#) (REPI) Challenge (\$40 million available). This funding supports land conservation, improvement, or management activities that limit incompatible development in the vicinity of DoD installations, as well as enhancements to military installation resilience to climate change or extreme weather events. Pre-proposals are due July 25, 2022.

NOAA has announced two habitat restoration and coastal resilience [funding opportunities](#) open under the Bipartisan Infrastructure Law:

- [Transformational Habitat Restoration and Coastal Resilience Grants](#) (\$85 million available) - proposals between \$1 million and \$15 million total over award period that focuses on ecosystem restoration, rebuilding fisheries, and natural infrastructure. Proposals due **September 6, 2022**.
- [Coastal Habitat Restoration and Resilience Grants for Underserved Communities](#) (\$10 million available) - proposals between \$250,000 to \$500,000 total over the award period that includes capacity-building activities for regional-scale resilience planning, project planning, feasibility studies, stakeholder engagement, proposal development for future funding, and restoration activities (demonstration projects, engineering and design, permitting, and on-the-ground implementation). Proposals are due **September 30, 2022**

Additionally, check out the [new website](#) - a one stop shop for information - related to infrastructure awards associated with NOAA shared by Sean Corson, Director of the NOAA Chesapeake Bay Office.

## **2:30 PM      Adjourn**

**Upcoming Activities:** Climate Strategic Review System (SRS) kickoff meeting planned for August 15, 2022 - progress review of CRWG's 2021-2022 [workplan](#)

Attendees: Alex Gunnerson, Amy Goldfischer, Cassie Davis, Debbie Herr Cornwell, Elizabeth Andrews, Jackson Martingayle, Jamileh Soueidan, Jason Dubow, Jessica Rodriguez, Jim George,

Julie Reichert-Nguyen, Katie, KC Filippino, Kevin Du Bois, Lena Easton-Calabria, Mark Bennet, Molly Hassett, Sharon Hockenberry, Susan Larcher, Taryn Sudol, Zoe Johnson

Group 1

# What are your organization's climate resiliency priorities related to water quality, habitats, living resources, and/or communities

Climigration (human pops, wildlife, invasive species...)  
(MDSG) \*

Engaging/benefiting underserved communities (MDSG) \*

MD Sea Grant: Hearing from funders for various restoration would be a good meeting too. What are they looking for? How to increase submitters chance of success...

Wetland adaptation planning. Succeeding with wetland migration - Maryland Department of Planning \*

Climate Leadership and Community Protection Act, Climate Justice Working group, climate resilient farming - NYS DEC

DoD Naval Academy: continuing work on design standards for stormwater. issuing new regs with considerations of Climate change

DoD Naval Academy: Priority to buffer military installations. Restoration and conservation through the REPI program. Off base land as well \*

SLR impacts --> land use transitions

Tidal wetlands/marsh migration (MDSG)

Management of floodplain development and flood resiliency - NYS DEC

Saltwater intrusion (aquifers) and salinization (farmland, forest land, wetlands, surface waters) - Maryland Department of Planning \*

Focus on working with other partners. One example of a project is America the Beautiful \* \* \*

"Large-scale" restoration planning/strategies/implementation (MDSG) \*

Move \* next to priorities that you think the CRWG could help support

\* \*

\* \* \*

\* \* \* \* \*

# What are your organization's climate resiliency priorities related to water quality, habitats, living resources, and/or communities

DoD: Updating installation Integrated Natural Resource Management Plans to address climate impacts on natural resources.

Engaging/benefiting underserved communities (MDSG)

Assessing vulnerability of urban and non-urban tree species to climate change impacts to ensure natural habitats stay on the landscape - NYSDEC

Development of standardized method for calculating carbon sequestration from urban BMPs

DoD: addressing climate impacts on stormwater infrastructure capacity, performance, etc.

Consideration of future physical climate risks, guidance on natural resilience measures, management of floodplain development, focus on environmental justice areas - NYS DEC

Increasing afforestation (including riparian buffers), invasive sp. control, reforestation, restoration of degraded habitat, urban tree planting, local land acquisition -NYSDEC

Mid-Atlantic RISA (Regional Integrated Sciences and Assessments) prioritizes climate resiliency through improved data, place-based decision support, and public engagement

DoD: Use of natural and nature based strategies to protect mission operations, assets, transportation corridors, and essential services.

Helping local governments integrate climate change adaptation into water resource planning (e.g., through local comprehensive plans) - Maryland Department of Planning

Identifying opportunities for shared funding, human capital and expertise to meet common climate resiliency goals

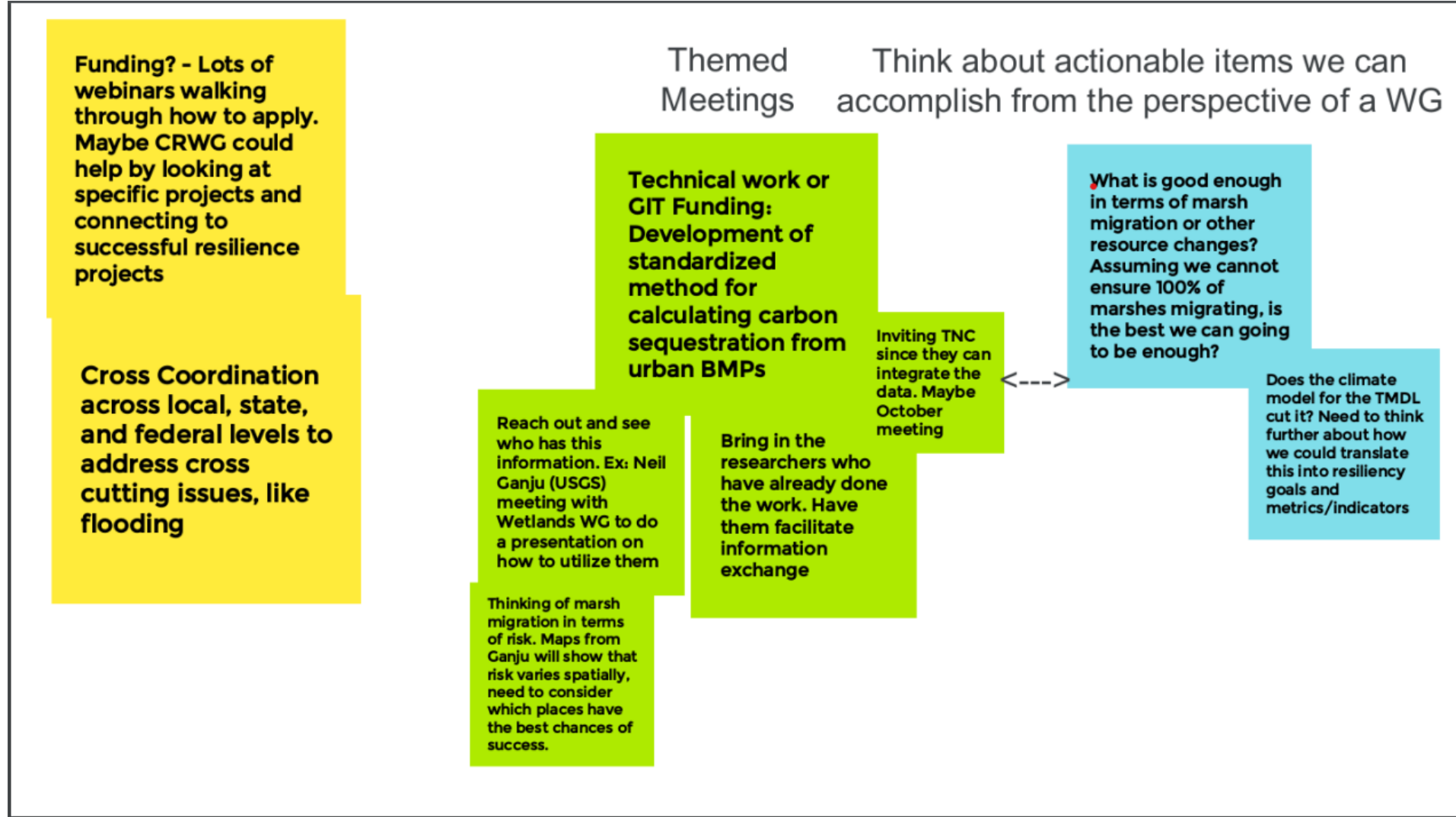
Move \* next to priorities that you think the CRWG could help support

\* \* \* \* \*

\* \* \* \* \*

Jamboard Slide 2 (note: group 2 ran out of time during breakout session to apply asterisks)





Jamboard Slide 3 (ideas for future themed CRWG meetings)