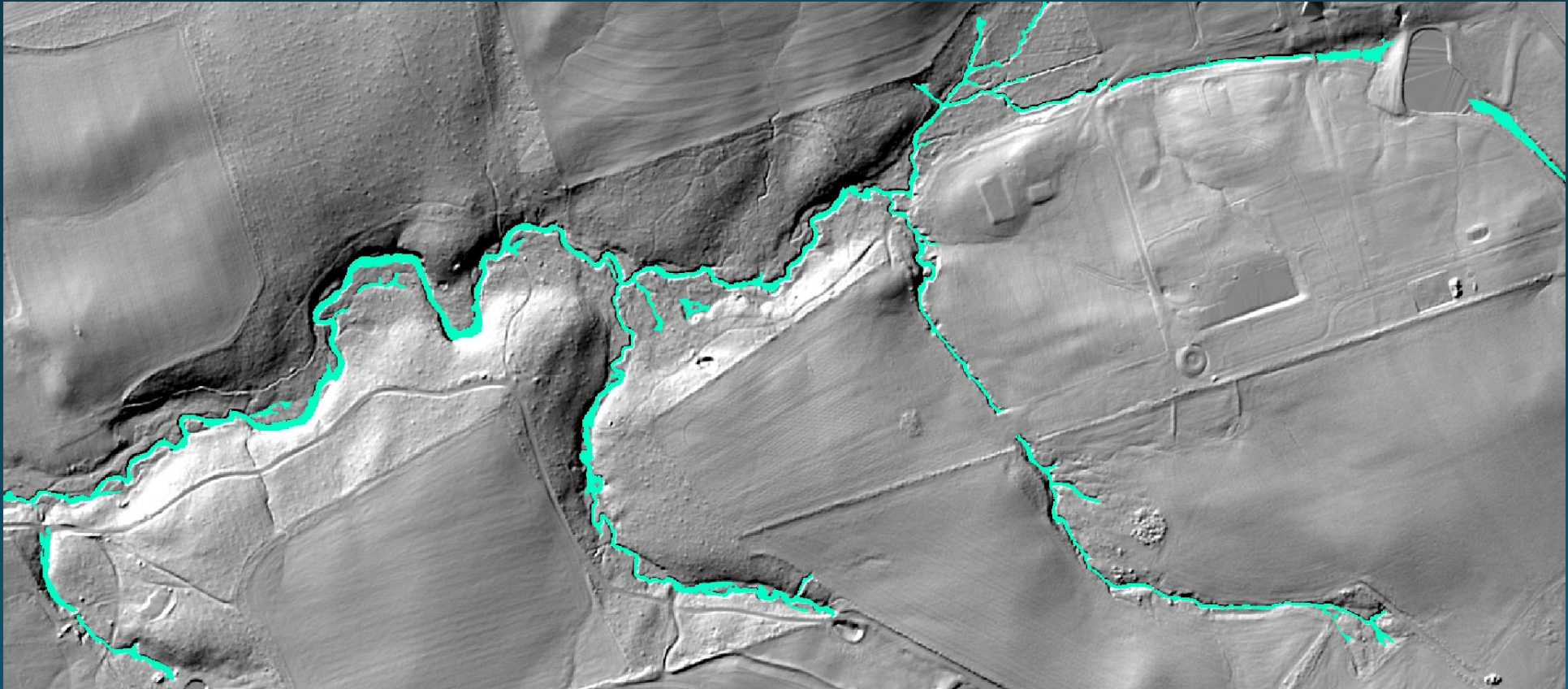


Objective 2: Hydrography updates

David Saavedra – October 2020 LUWG meeting



- UMBC students >95% finished manual classification of channel-like features in Lower Susquehanna
- Matt Baker continues to develop machine learning model to automate feature classification
- Methods for calculating continuous channel width still under development
 - Working methods have been developed as proof-of-concept, scaling methods poses new challenges
- Continuing to share preliminary data upon request
 - PA DCNR Bureau of Geological Survey
 - Howard County MD Dept. of Planning and Zoning

Questions?

dsaavedra@chesapeakeconservancy.org