

# Chesapeake Protected Lands Indicator Progress



**Chesapeake Bay Program**  
*Science. Restoration. Partnership.*



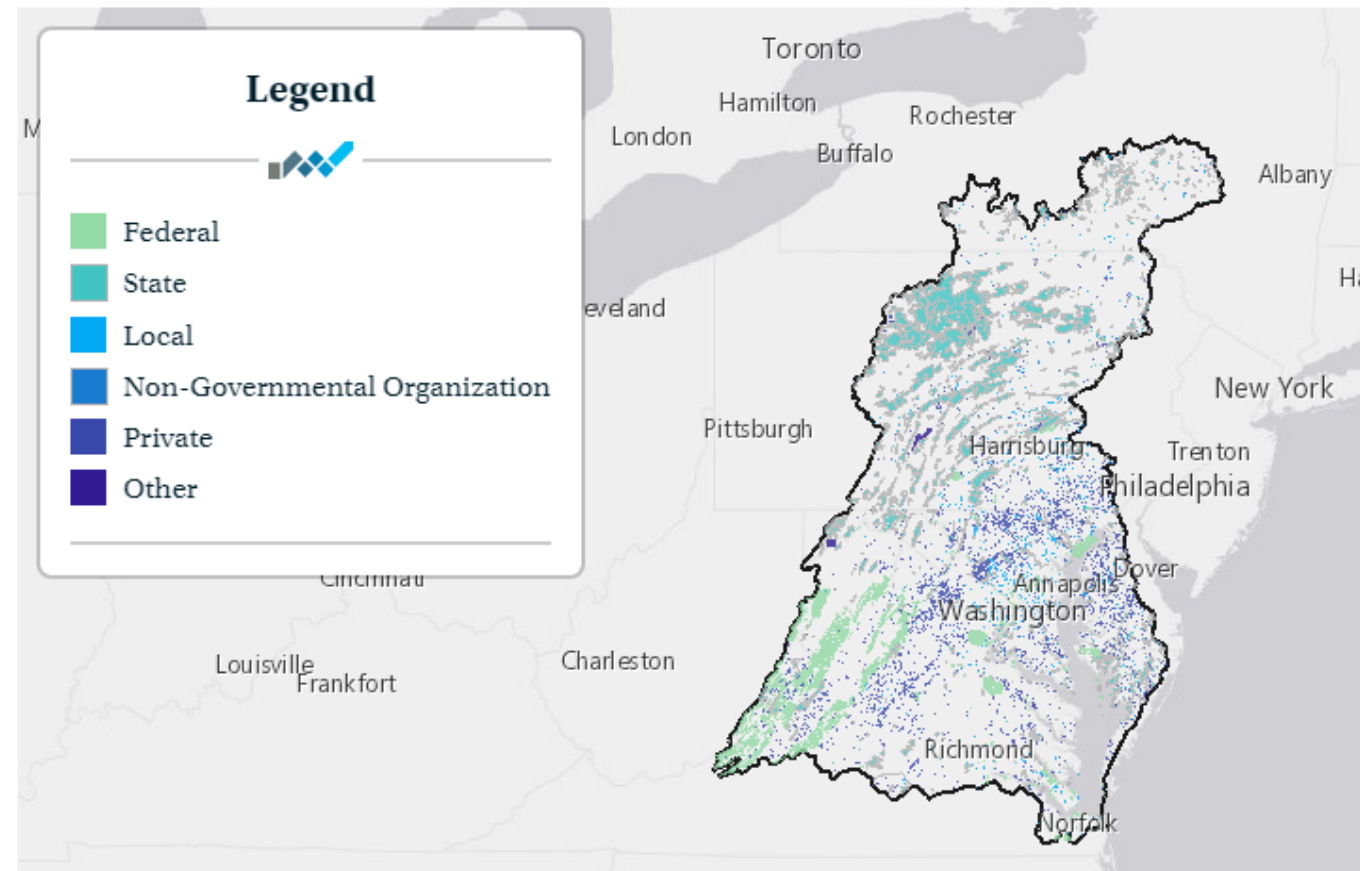
**Jake Leizar**  
Conservation GIS Project Manager  
jleizar@  
chesapeakeconservancy.org

**Renee Thompson**  
Geographer, USGS  
rthompson@chesapeakebay.net

## How Things Used To Be

- Gather multiple sources of data on protected lands from states in the watershed, NGOs, federal sources, individual sources, and more
- Integrate into one finalized dataset, based on a schema decided by the Protected Areas Database of the United States
- Every other year, requires a large amount of manual processing, outreach, and data quality control

## Protected Land Ownership (2018) [↗](#)

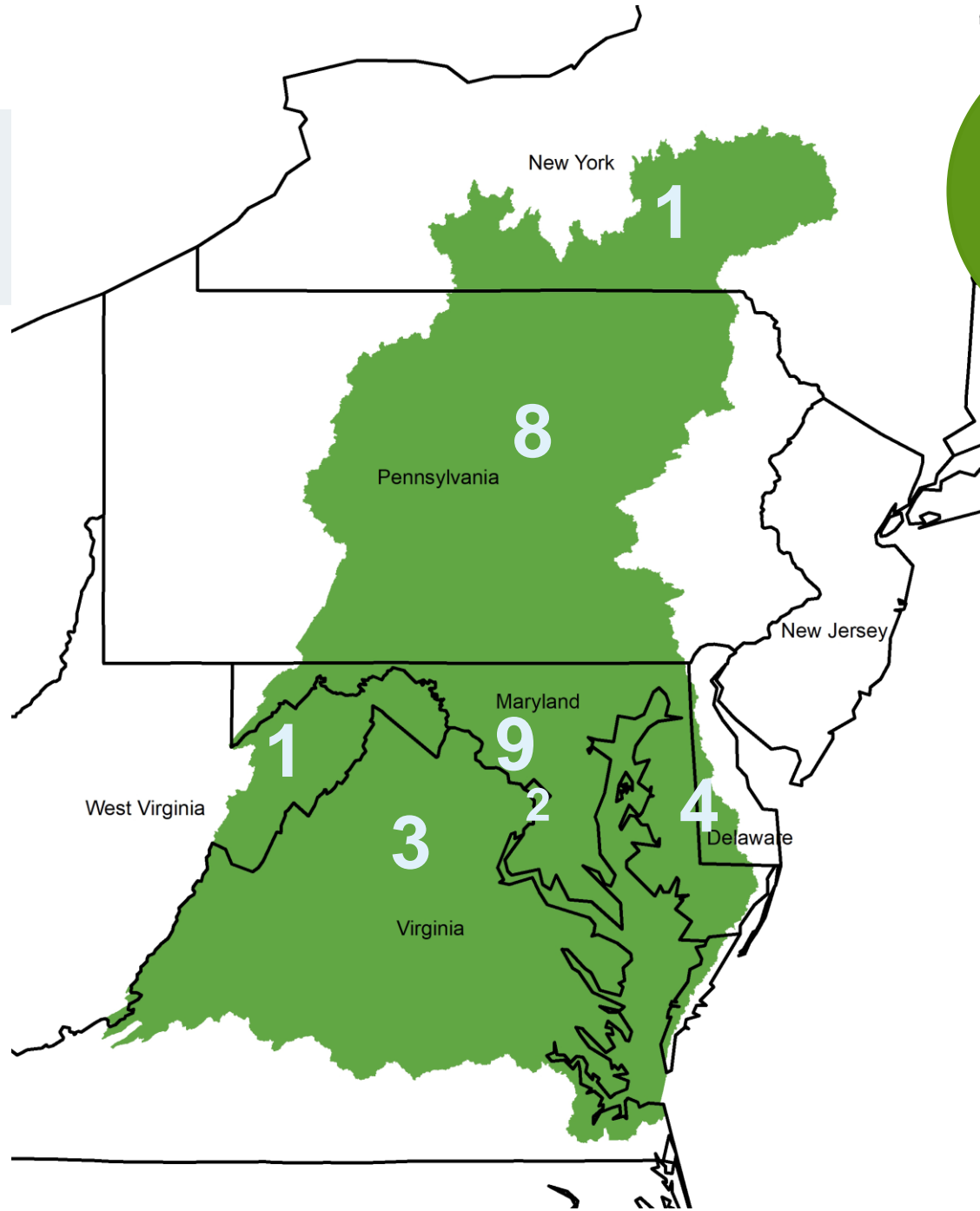


## This Work

- Document and record the specifics of previous manual process
- 2020-2021 Maryland as a pilot state due to the depth and variety of data sets
  - This process can be found in the document “Maryland Protected Lands Data Assimilation and Standardization Guide”
- Once the documentation process was completed, the project team then worked to find places to automate this process of assimilation, as well as automate the next steps of acreage calculations
- These automations were placed into four separate Python Scripts and ArcGIS Toolboxes, for use CBP or other protected land’s data practitioners
- Maryland piloted and with the **Support** of USGS and NPS project expanded to the whole watershed (2021-2022) completion in June 2022

## Partners in Data and Coordination

- 1 general dataset for New York
- 8 datasets for Pennsylvania
- 9 datasets for Maryland
- 4 datasets for Delaware
- 1 dataset for West Virginia
- 3\* datasets for Virginia
- 2 datasets for DC
- 1 national dataset



1 dataset from the Protected Areas Database of the United States

## Partners in Data and Coordination

- We have worked with over 50 partners across the bay jurisdictions to present the project, compile data, identify missing data, and get input on interim product.
- ALL 7 bay jurisdictions have been engaged, active and helpful!
- Working actively with CCP leadership, CBP Communications and Indicators/Web team and USGS to communicate the roll out of the 2022 dataset.

## Where is the Team at now?

### ■ Review

- Reviewing state polygons as compiled and transformed

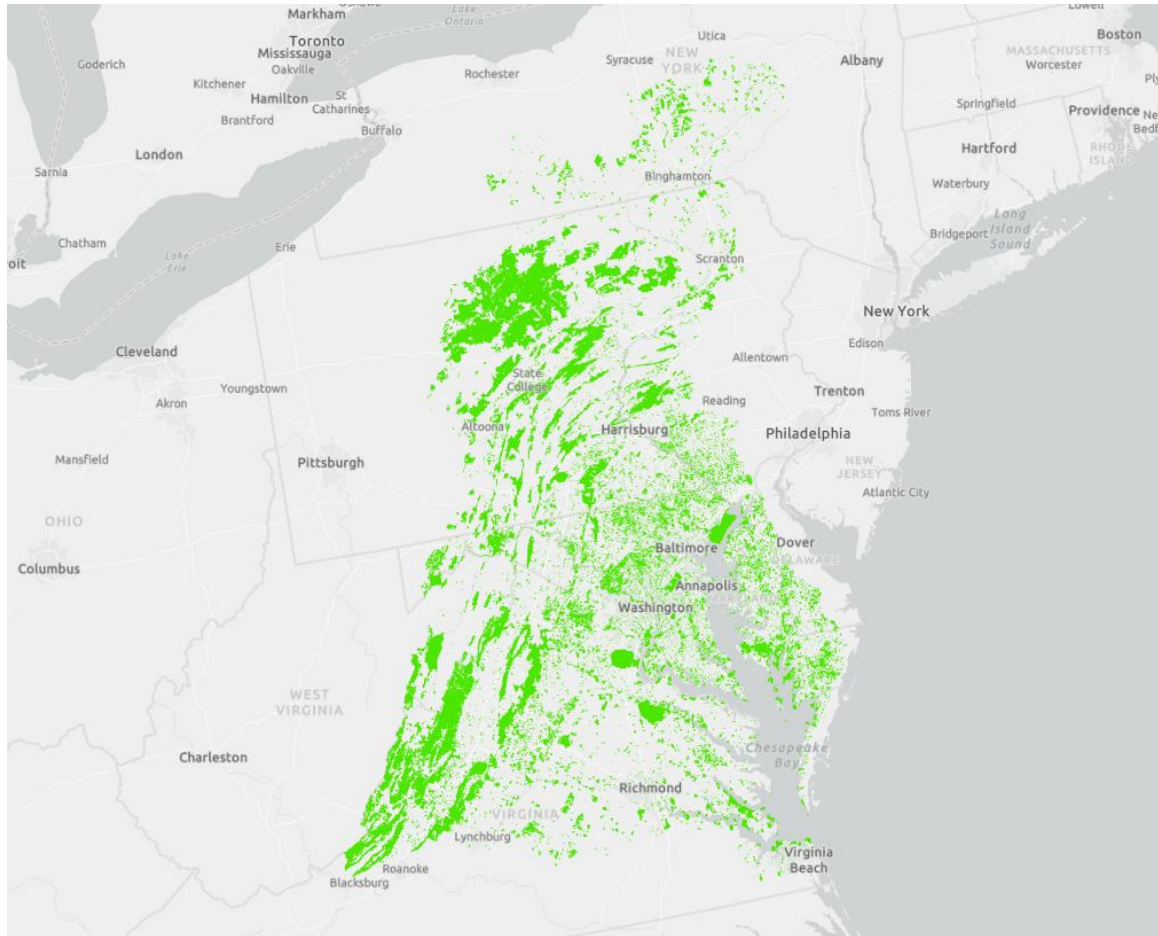
### ■ Confirm

- Reach out to partners for data confirmation

### ■ Publication

- Update indicator documentation and websites on Chesapeake Progress
- Communication and roll out

## Preliminary Findings



- Initial analyses on the overall combined dataset has commenced
- We're finding gaps in datasets, but these aren't indicative of a decrease in conserved lands, more so indicative of datasets changing or not being represented
  - For example, Delaware has completely restructured their protected lands dataset, while West Virginia has not been able to update theirs since the last collection
- With the increased speed of this process, we can run review analyses much faster

**Preliminary (provisional) data, information, or software:**  
The data have not received final approval by data providers and are provided on the condition that neither the USGS nor CBP shall be held liable for unauthorized use of the data.