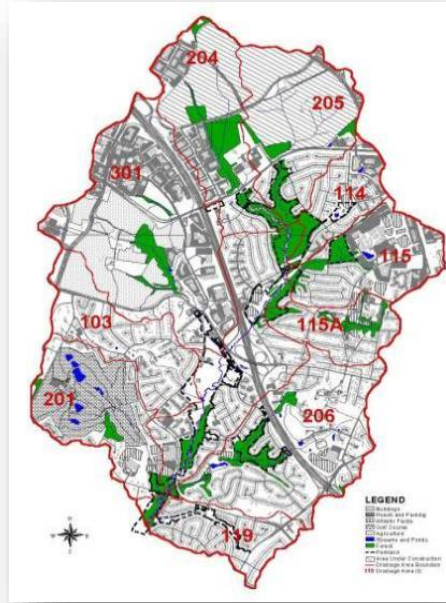


Welcome and Introductory Remarks



Neely Law and Matthew Meyers,
Co-Chairs, Stream Health Work Group

Norm Goulet Chair
Urban Stormwater Work Group

Agenda for Today

10:15 to 11:15 **Panel 1:**

Technical Issues with Crediting Protocols

11: 15: 12:00 **Panel 2:**

Post-Permit Project Inspection and Verification

12:00 to 12:30 LUNCH BREAK

12:30 to 1:30 **Panel 3:**

Key Permit Issues to Resolve

1:30 to 2:30 **Panel 4:**

Integrating Functional Uplift in TMDL Projects

2:30 to 3:00 **Next Steps**

Objectives for Workshop

- Provide forum for practitioners, regulators and local government to share insights on best practice
- Identify priority technical and policy issues to resolve to ensure high quality projects that produce verifiable pollutant reduction and functional uplift
- Establish action teams to recommend solutions to address these priority issues
- Report to Bay managers later in 2018

Opportunities for Interaction/Feedback

1. Respond to Poll Questions After Each Panel Session
2. Provide Pithy Comments in Chat Box
3. E-Mail Comments/Resources on Each Panel to include in Workshop Recommendations Report
4. Provide Comments on Verification Protocol
5. Serve as a Sage Advisor on Post Workshop Action Teams

Ground Rules for Today

- No whining
- No wind-bagging
- No long guitar solos
- No mud-slinging on other design approaches
- No discussion of outfall stabilization protocol today

History of CBP Stream Restoration Crediting

- Expert Panel Report approved in 2013
- Report was revised after a “test-drive” period in 2014
- Changes in how streams and sediment are simulated in Phase 6 watershed model in 2017
- USWG approves SR Protocol FAQ document in 2018
- February forum calls for more guidance on this topic



Stream Health Work Group

- Continually improve stream health and function throughout the watershed.
- Improve health and function of 10% of stream miles above the 2008 baseline for the Chesapeake Bay watershed



Stream Health SHWP

Management Strategy

2015–2025, v.1



Stream Health Workplan

Management Approach 1

- Identify an appropriate suite of metrics to measure the multiple facets of stream health to complement the baywide Chessie BIBI

Management Approach 2

Provision of adequate funding and technical resources to support functional life in stream restoration projects, in addition to nutrient and sediment reductions.

Permitting

Management Approach 3

- Active and engaged participation by local communities with Federal and State partners is central to Bay restoration

Stream functions

Management Approach 4

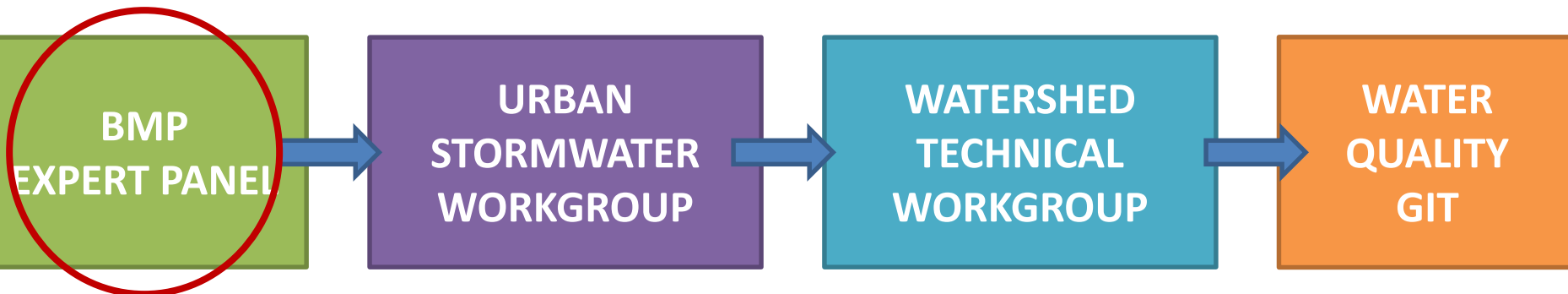
- Develop and Promote holistic stream restoration design guidelines that identify the level of degradation and improvement of stream functions and key stressors/factors limiting potential uplift.

Management Approach 5

- Work with CB partners to include the Enhancing Partnering, Leadership and Management GIT to enhance the capacity of local governments, organizations and landowners of beneficial stream restoration and maintenance practices.

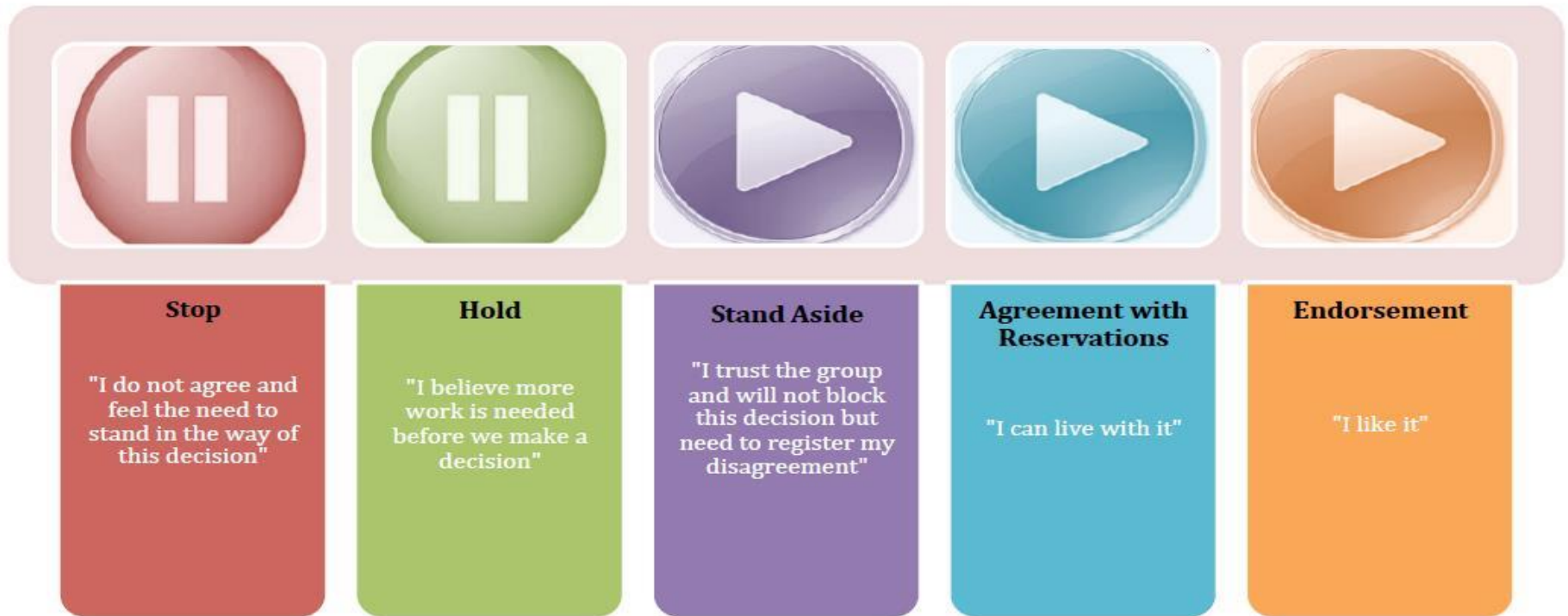
Expert Panel Process

- Detailed Review Protocol for all BMPs
- Experts include researchers/practitioners and program administrators (10 to 15)
- Development of definitions and protocols to derive nutrient/sediment removal rates
- Take about 9-12 months each
- Further state and EPA review before approval





Consensus Continuum



Questions and Comments

