

Building local water quality stories

Providing information to help focus local planning efforts

Emily Trentacoste

EPA Chesapeake Bay Program Office

LGEI Meeting 1/16/2018

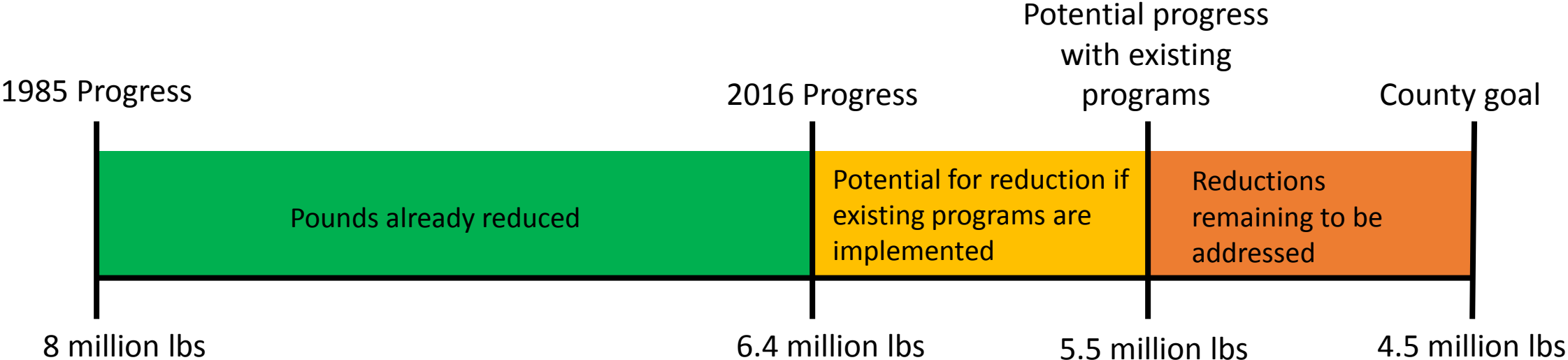
Trentacoste.Emily@epa.gov

410-267-5797

Providing technical information for local areas

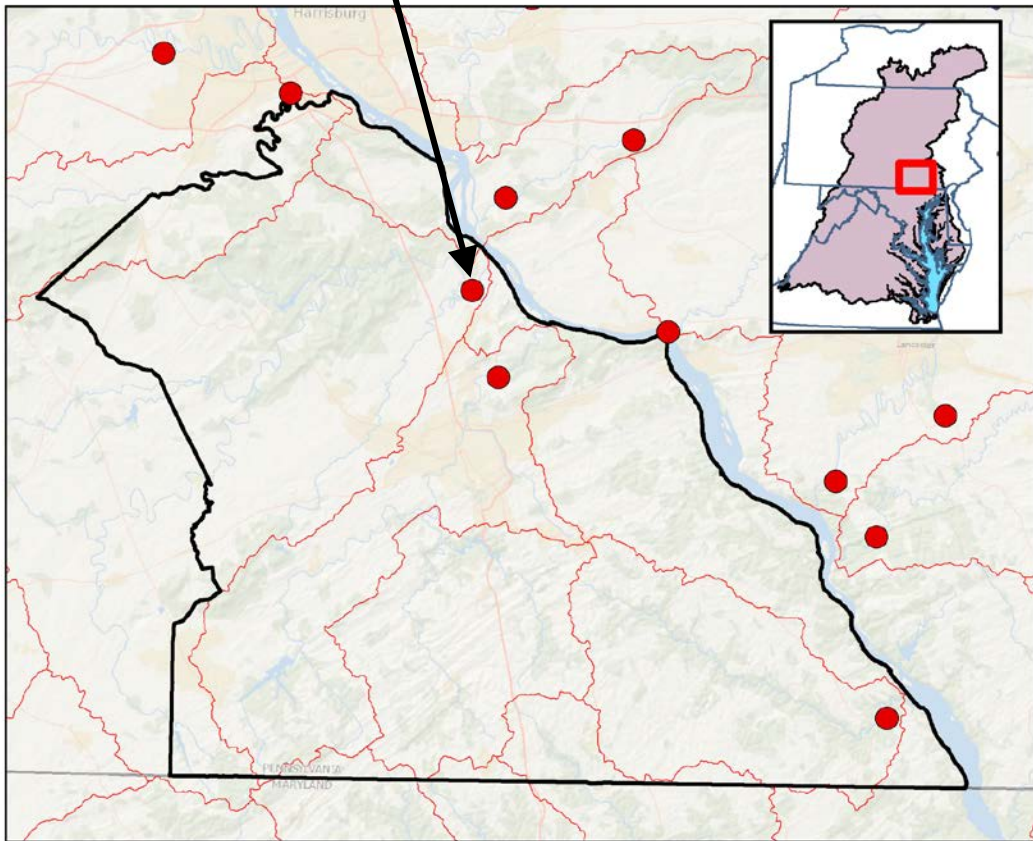
- Technical information provided by Bay Program is meant to supplement local knowledge
- Road to planning goal (see next slide)
- Current water quality story
 - Monitoring and trends data
 - TMDL locations and overlap
 - Impaired streams locations
- Important/useful information for focusing efforts
 - Land use map
 - Groundwater contribution and data
 - Most vulnerable, sensitive, and effective areas
 - Sources of nutrients and sediment
- BMP implementation information
 - Current BMP implementation levels
 - Top cost-effective BMPs for addressing specific local issues
 - Geographic areas with remaining opportunity to implement

Hypothetical journey to a county goal

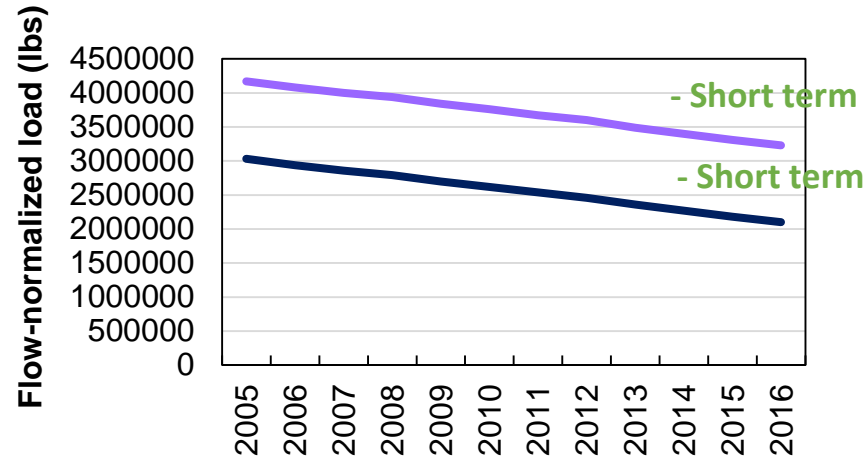


Water Quality Monitoring

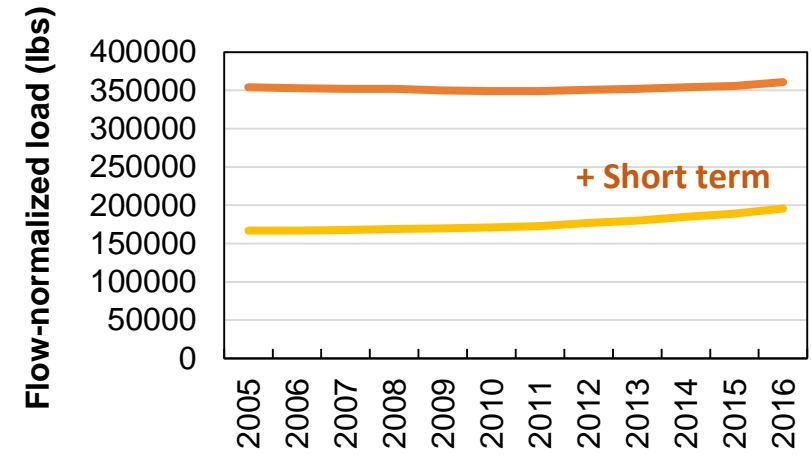
West Conewago Creek monitoring station



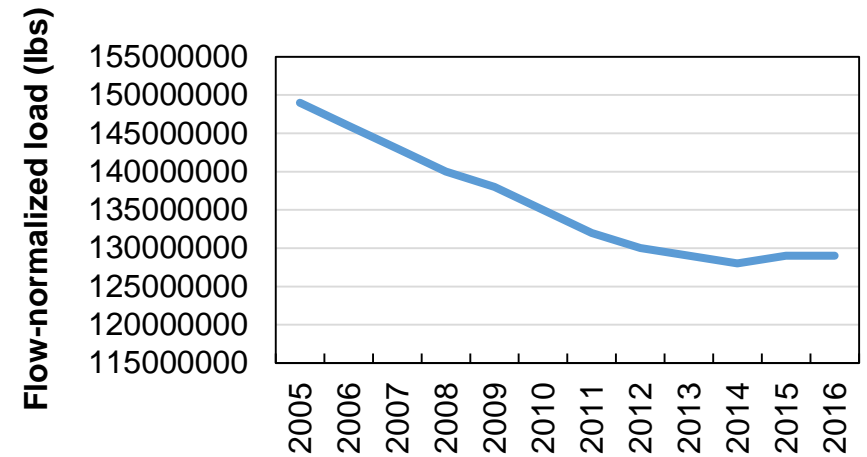
West Conewago Nitrogen



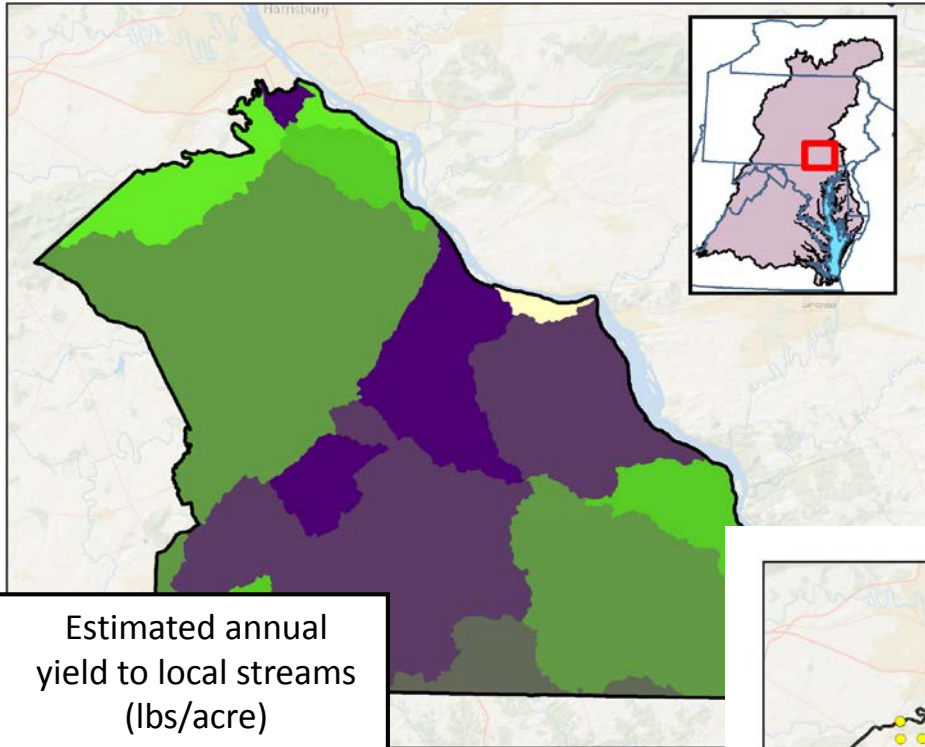
West Conewago Phosphorus



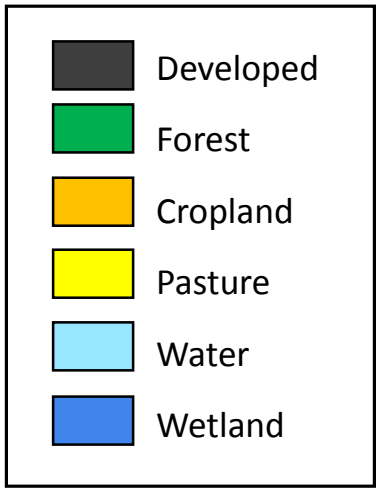
West Conewago Sediment



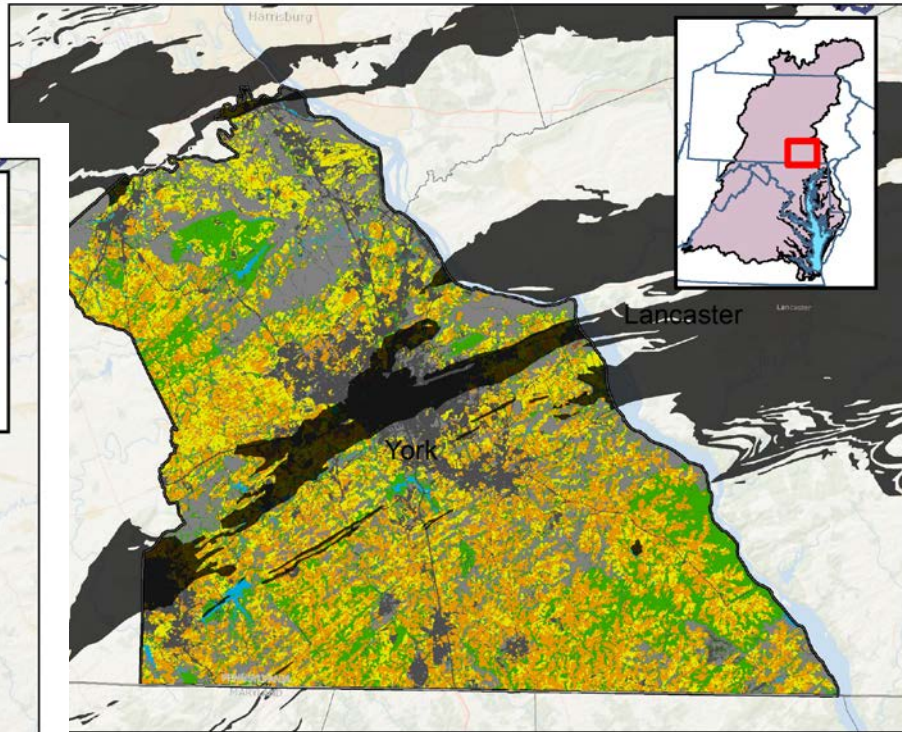
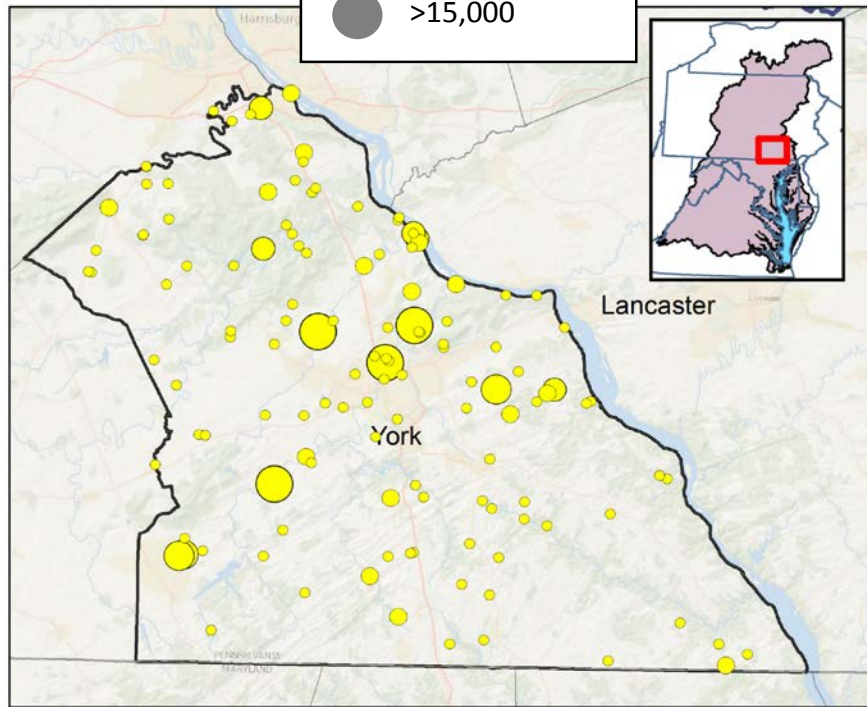
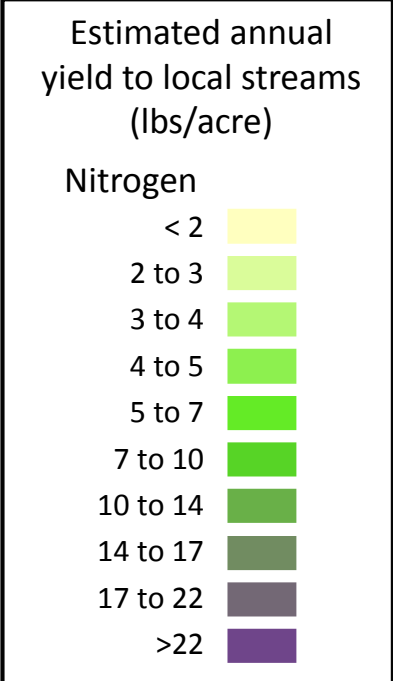
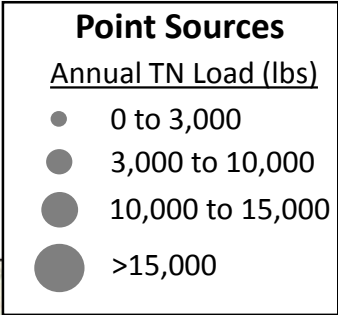
Information helpful for focusing efforts



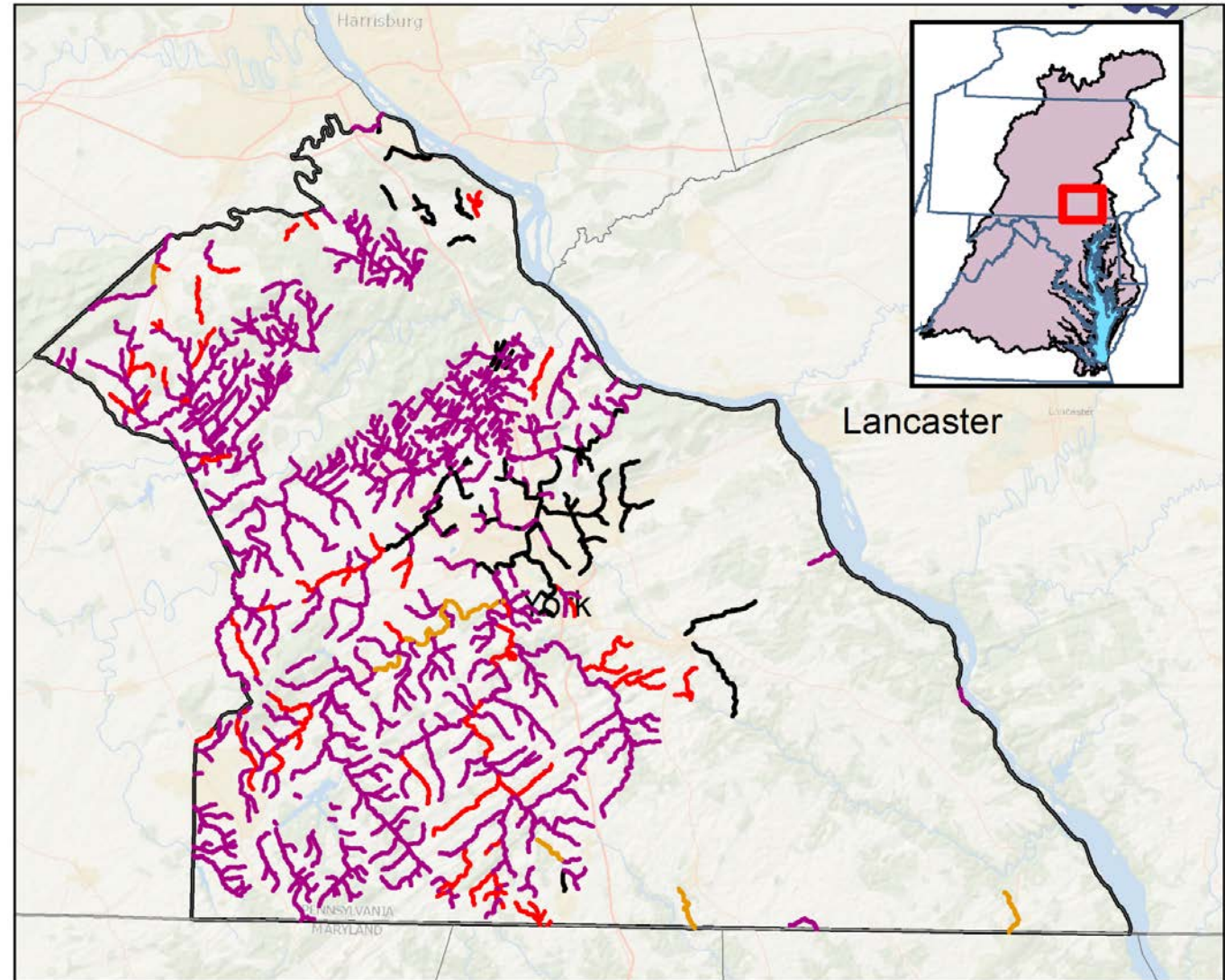
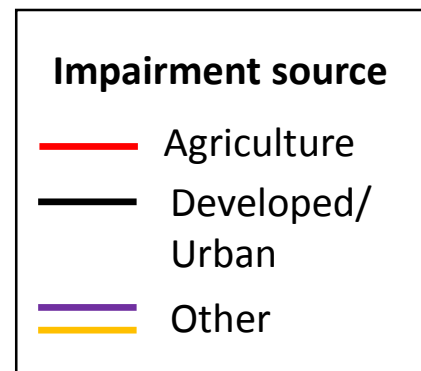
Vulnerable geology
(Areas underlain by carbonate geology)



Map modified from Jimmy Webber, USGS, using Brakebill, JW 2000 and Ator, S. et al. 2005.

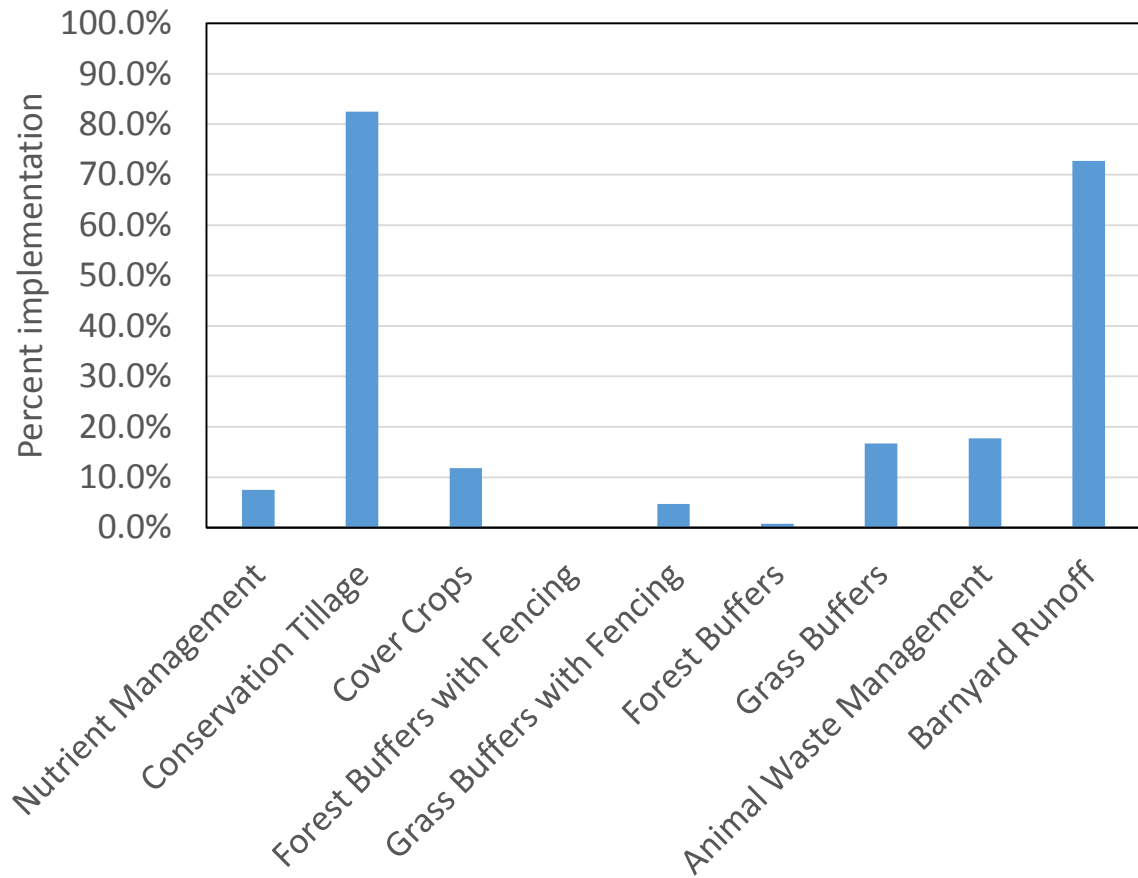


Local impaired streams information



Current BMP implementation

Agricultural Practice Implementation 2016



Developed Land BMP implementation

