

Objective 1 Updates

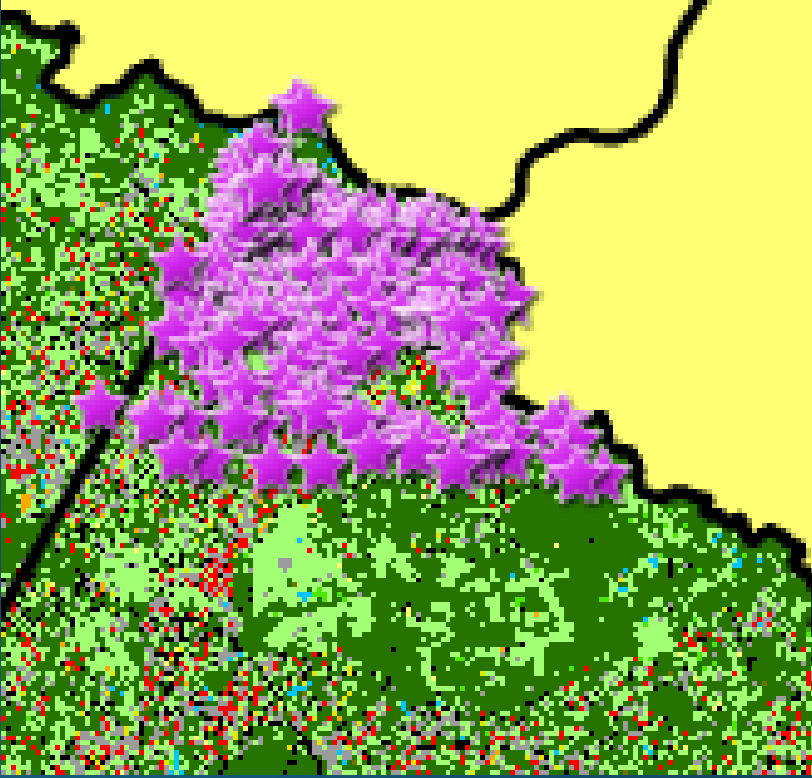
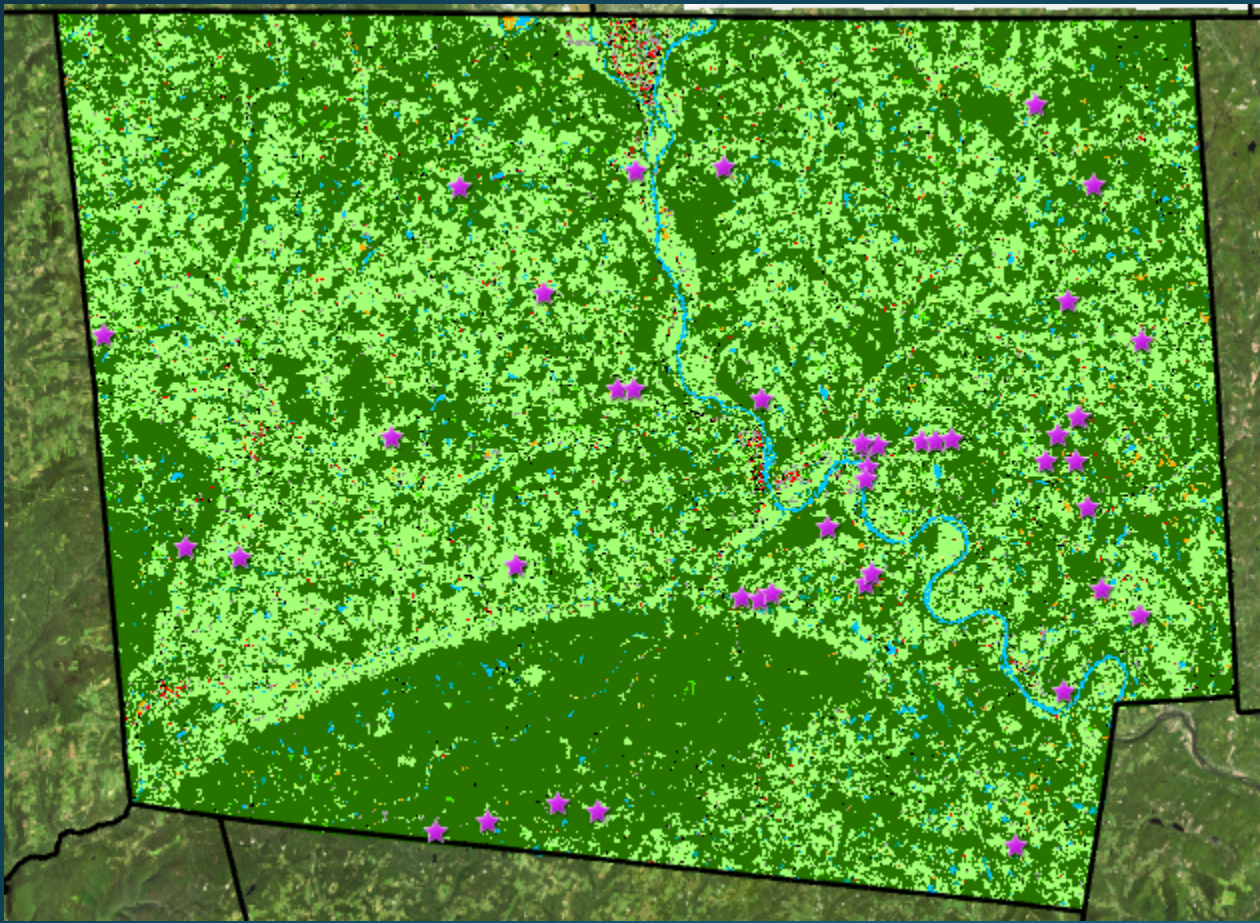
November 4, 2020: LUWG

Rachel Soobitsky

rsoobitsky@chesapeakeconservancy.org

Versioning of the LC/LU Products

- To incorporate all local feedback, we are creating 2 versions of the datasets
- June 2021 – CBP internal deadline
 - V1 2017/18 LC and LU
 - V2 2013/14 LC and LU
 - V1 of 2013/14 – 2017/18 LC and LU Change
- December 2021- published version (winter 2021/22)
 - V2 2017/18 LC and LU
 - V3 2013/14 LC and LU
 - V2 of 2013/14 – 2017/18 LC and LU Change
 - Wetlands incorporated



V1 of 2017/18 LC and LU: June 2021

- What will be fixed in LC product:
 - Tile line/seam line errors
 - Systematic errors and large mistakes
 - Impervious - barren errors
 - Larger building errors
 - Multiple building errors in one location
 - Large water errors
 - False impervious that you find in new neighborhoods



V2 of LC and LU: December 2021

- What will be fixed in LC product:
 - Wetlands incorporation bay wide
 - Other edits captured by local review (and by UVM's QAQC team)
 - Parking lots wrongly classified as roads
- This will be the final, published data!!
 - Need to announce push-back of published data from Summer 2021 to Winter 2021/22
 - We will allow certain projects to acquire draft or V1 data prior to the final V2 data release- with caveat that this data is not final and make sure they understand the differences between versions.

Questions?

rsoobitsky@chesapeakeconservancy.org