



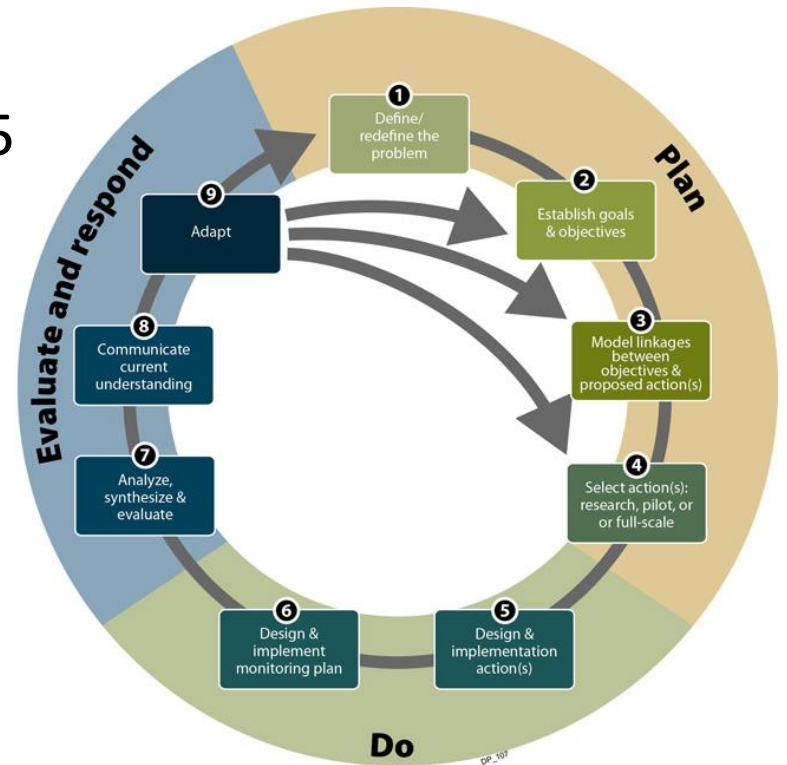
NFWF

# Chesapeake Bay Business Plan Update

*Jake Reilly, Chesapeake Bay Program Director  
Habitat Goal Implementation Team— June 19, 2018*

# NFWF Chesapeake Bay Business

- Goals and outcomes, investment strategies, and monitoring plans for NFWF's CB investments through 2025
- Our own "Midpoint Assessment":
  - Better align with 2014 Agreement
  - Incorporate new data/information
  - Adopt new goals, as appropriate
  - Establish monitoring plans
- Process to date:
  - Initial consult with GIT, work group and action teams summer 2017
  - Ongoing consultation with members and SME through spring 2018



# Conservation Outcomes – Overarching Goal

“An environmentally and economically sustainable Chesapeake Bay watershed” as set forth in the 2014 Chesapeake Bay Watershed Agreement.

NFWF’s Chesapeake Bay Business Plan has been developed to provide measurable contributions to goals and outcomes of the Chesapeake Bay Watershed Agreement, specifically those associated with:

1. Water quality improvement through nutrient and sediment reduction to serve the foundation for healthy fisheries, habitats and communities across the Chesapeake Bay region.
2. Restoring and protecting key Chesapeake bay species and their habitats, and
3. Building an engaged and diverse citizen and stakeholder presence that will build upon and sustain progress.

# Eastern Brook Trout

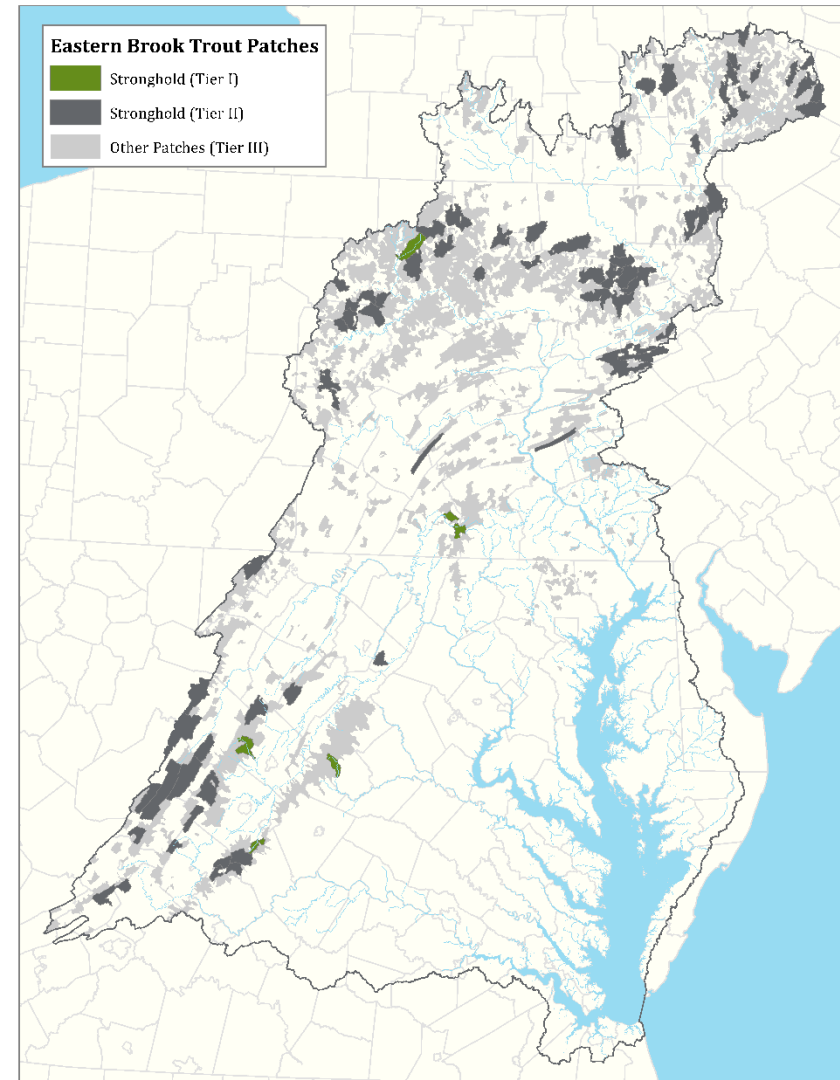
**Outcome:** Maintain and increase EBT populations in 6 stronghold patches

**Strategies:**

- Patch-level habitat and population assessment
- Manage polluted runoff
- Restore and conserve riparian and freshwater habitats
- Increase connectivity within and between patches

**Monitoring and Evaluation:**

- Independent, tiered monitoring of patch-scale distribution, project and reach-scale abundance



# American Black Duck

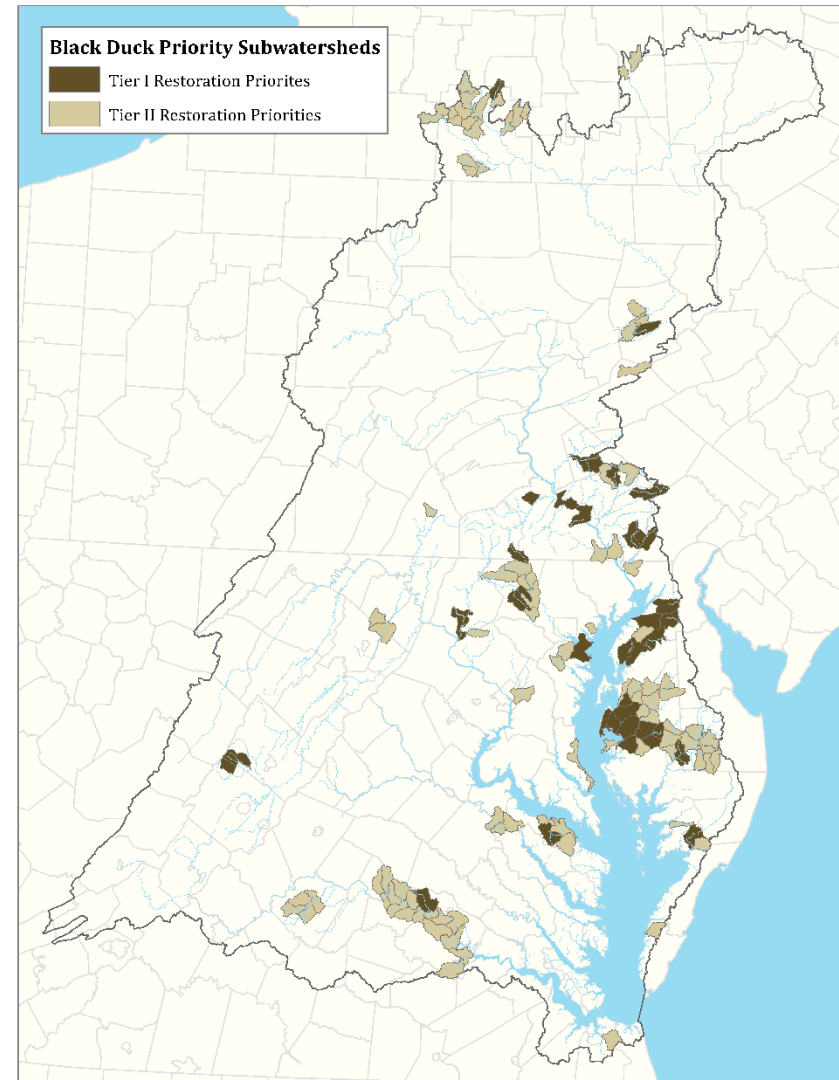
**Outcome:** Increase wetland habitat and available food to support 5,000 wintering black ducks

**Strategies:**

- Restore and conserve tidal and non-tidal wetland marsh habitat
- Facilitate marsh migration corridors
- Manage shoreline erosion and marsh loss

**Monitoring and Evaluation:**

- Independent monitoring of duck use at wetland restoration sites



# River Herring

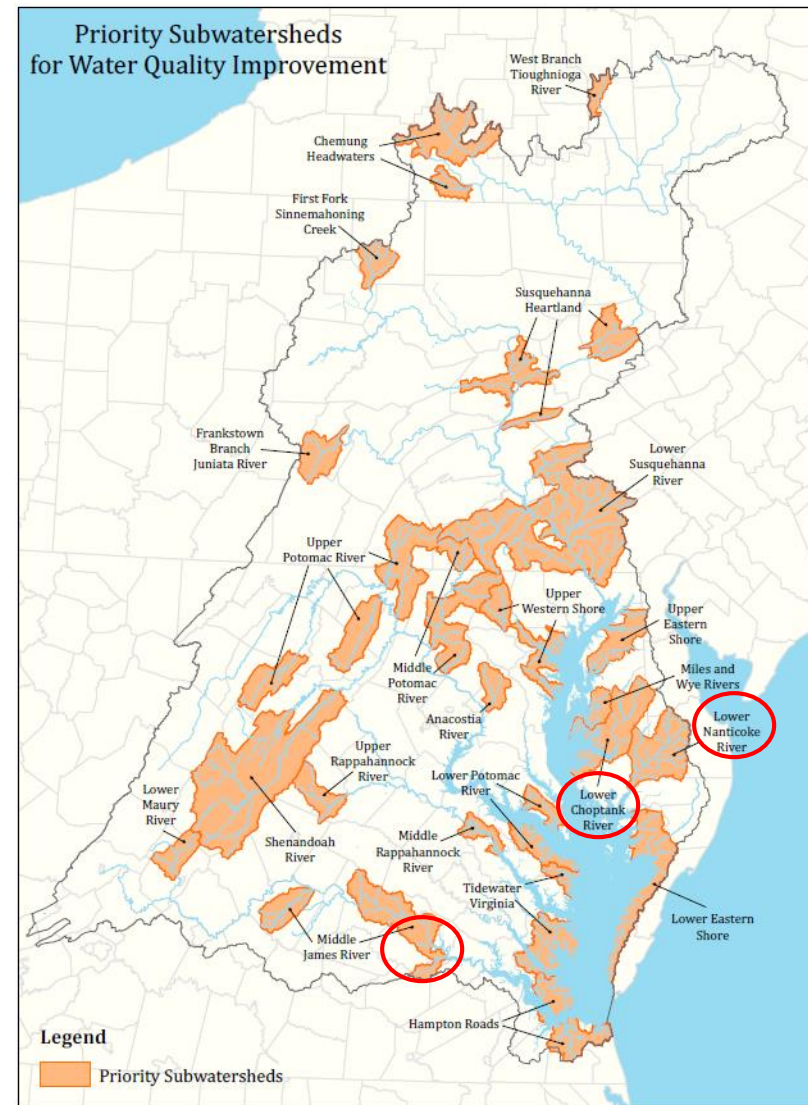
**Outcome:** Restore access and use of 200 additional miles of high quality migratory habitat

**Strategies:**

- Culvert assessment in priority rivers
- Increase connectivity through low-cost fish passage improvements

**Monitoring and Evaluation:**

- Independent monitoring of presence/absence and relative abundance up/downstream of passage improvements



# River Herring

**Outcome:** Restore access and use of 200 additional miles of high quality migratory habitat

**Strategies:**

- Culvert assessment in priority rivers
- Increase connectivity through low-cost fish passage improvements

**Monitoring and Evaluation:**

- Independent monitoring of presence/absence and relative abundance up/downstream of passage improvements

