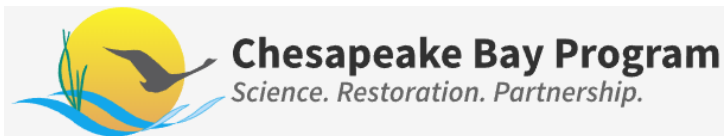


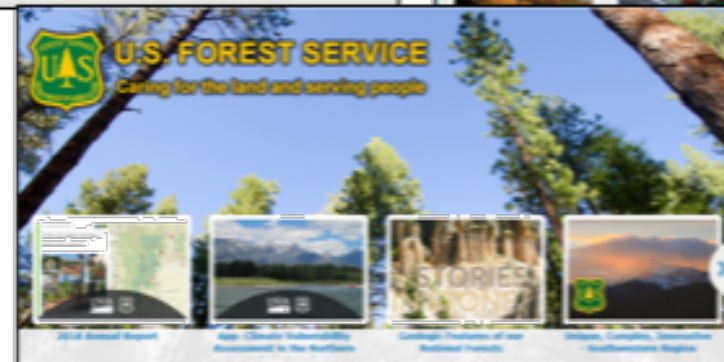
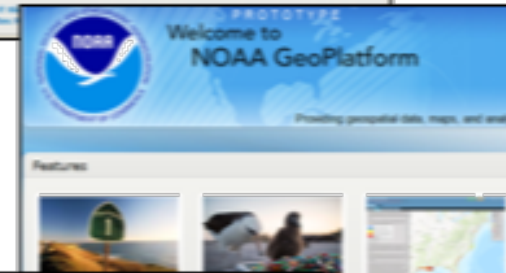
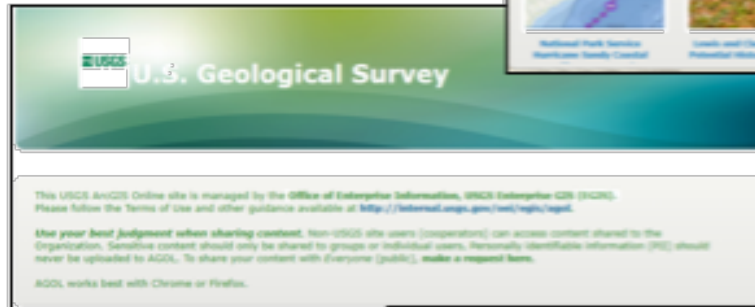
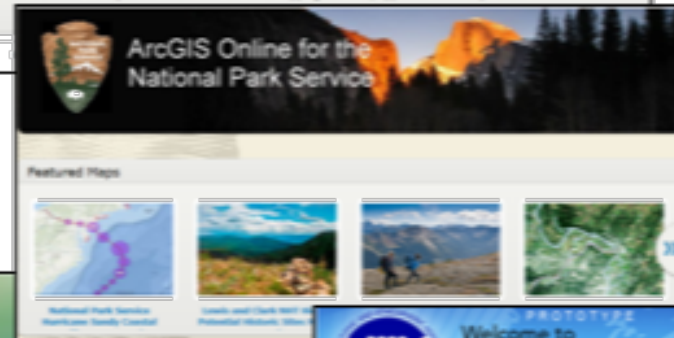
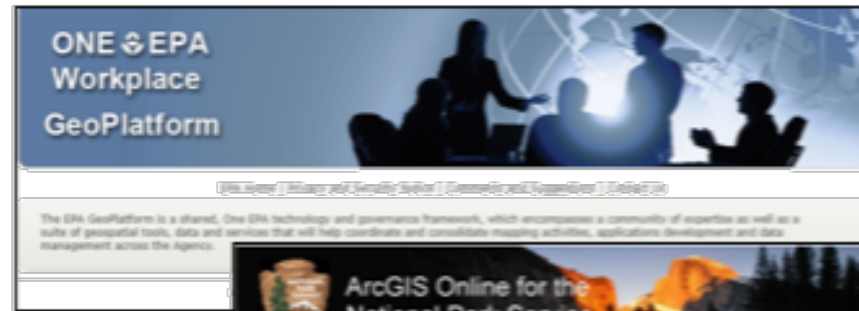
# Chesapeake Bay Open Data Portal

STAR meeting March 28

**John Wolf (USGS)**  
**Angie Wei (UMCES)**  
**Andy Fitch (USGS)**  
**Dave Strong (USGS)**



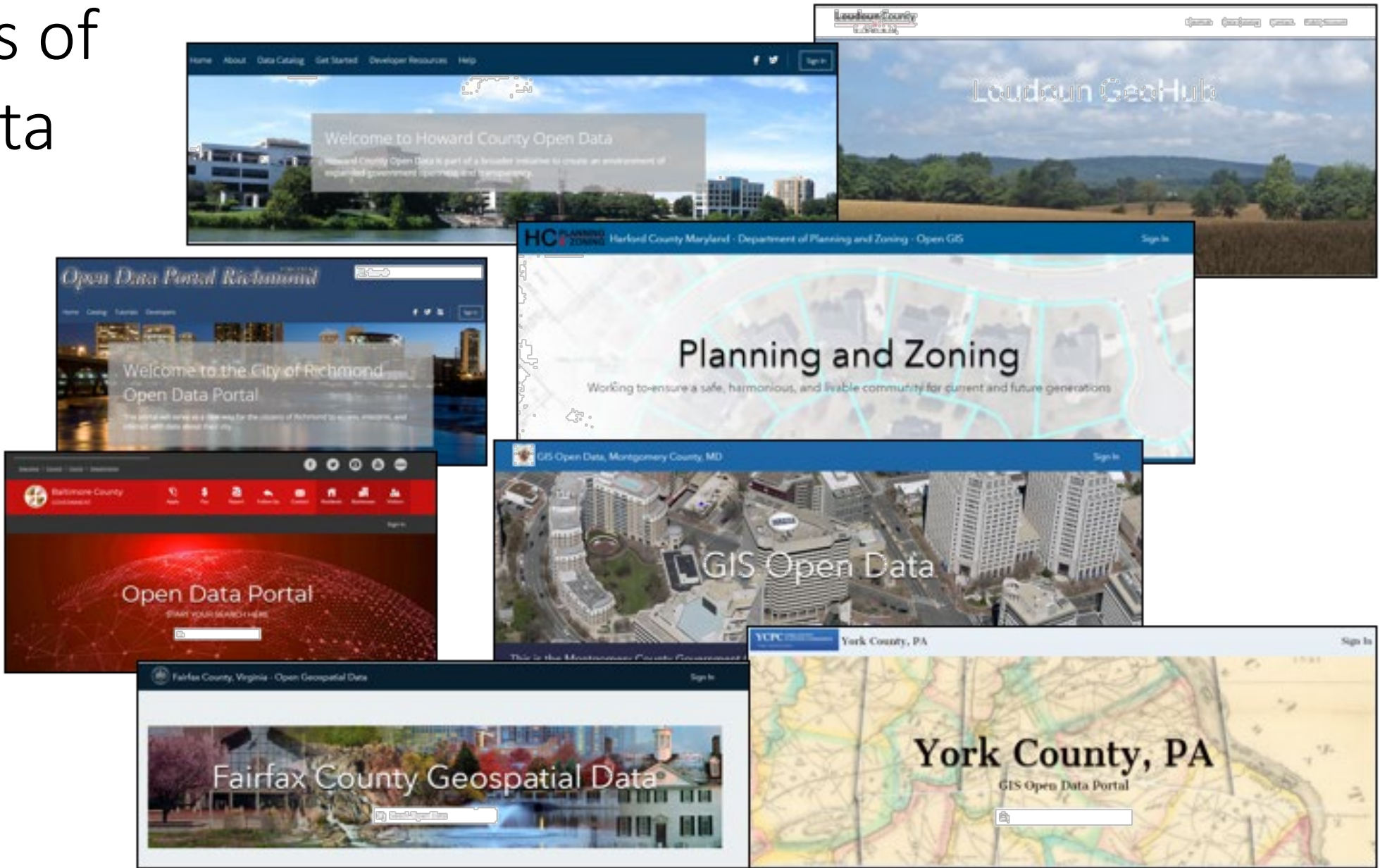
# Examples of Open Data Sites - Federal



# Examples of Open Data Sites - State



# Examples of Open Data Sites - Local



# Overview

- Provide web-based access to CBP and partner data and application resources
- A “one-stop shopping” solution
- For users who seek data/maps/apps/docs to answer questions of their interest in the Chesapeake Bay watershed

# Proposed Scope

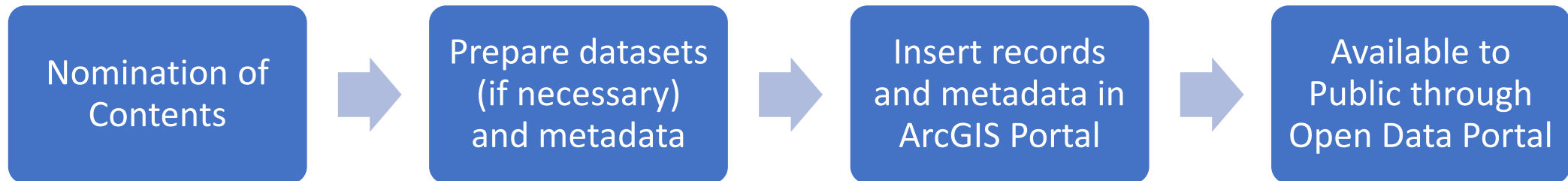
- Chesapeake Progress indicator data, methods documents
- Data products and applications developed as a result of GIT funded projects  
*e.g. Climate Data Repository, Healthy Watersheds Vulnerability, EJ Screen*
- Geospatial data products developed to support CBP Modeling, Monitoring, Cross-GIT Mapping
- Reference to key datasets that are used by GITs and Workgroups  
*e.g. Datahub, CAST, WIP Dashboard*
- Chesapeake Conservation Partnership data and application content referencing
- USGS Science products *e.g. Science Base*

# Potential Roles

- GIS Team Data Librarian - Angie
- Content nomination for inclusion
  - Coordinators/Staffers
- Monitoring Portal content for usefulness to GITs and Workgroups
  - Coordinators/Staffers
- Liaison to science data and applications providers
  - STAR

# Workflow

- Internal review between each step
- GIS team will develop data/metadata standards and review process





# Content

- <https://data-chesbay.opendata.arcgis.com/pages/data>
- Organization: 10 Goals and Science Oriented Groups
- Explore entire Data Catalog
- Track usage analytics of datasets

**Open Data Portal**  
Sharing Chesapeake Bay Data and Tools

Search for Data, Maps, Stories & Apps...

Discover Chesapeake Bay data by **Category**, or [Explore the entire Data Catalog.](#)

|                   |                    |                        |                       |                    |
|-------------------|--------------------|------------------------|-----------------------|--------------------|
|                   |                    |                        |                       |                    |
| Boundaries        | Modeling           | Monitoring             | Land Resources        | BMP                |
|                   |                    |                        |                       |                    |
| Water Quality     | Toxic Contaminants | Healthy Watersheds     | Sustainable Fisheries | Vital Habitats     |
|                   |                    |                        |                       |                    |
| Land Conservation | Public Access      | Environmental Literacy | Stewardship           | Climate Resiliency |

# Discussion

- What to include
  - Source data, excel tables, map services, or web maps...
- Ways to organize content
  - Take into account different users when organizing and developing groups and tags.



Thank you