



Pennsylvania's Cover Crop Enhancement Project



UNIVERSITY OF
MARYLAND

EXTENSION

Solutions in your community



Chesapeake Bay Program

A Watershed Partnership

Mark Dubin
Senior Agricultural Advisor

University of Maryland Extension-College Park
College of Agriculture and Natural Resources

**Department of Environmental Science &
Technology**

mdubin06@umd.edu

EPA Chesapeake Bay Program Office
mdubin@chesapeakebay.net



Project Team

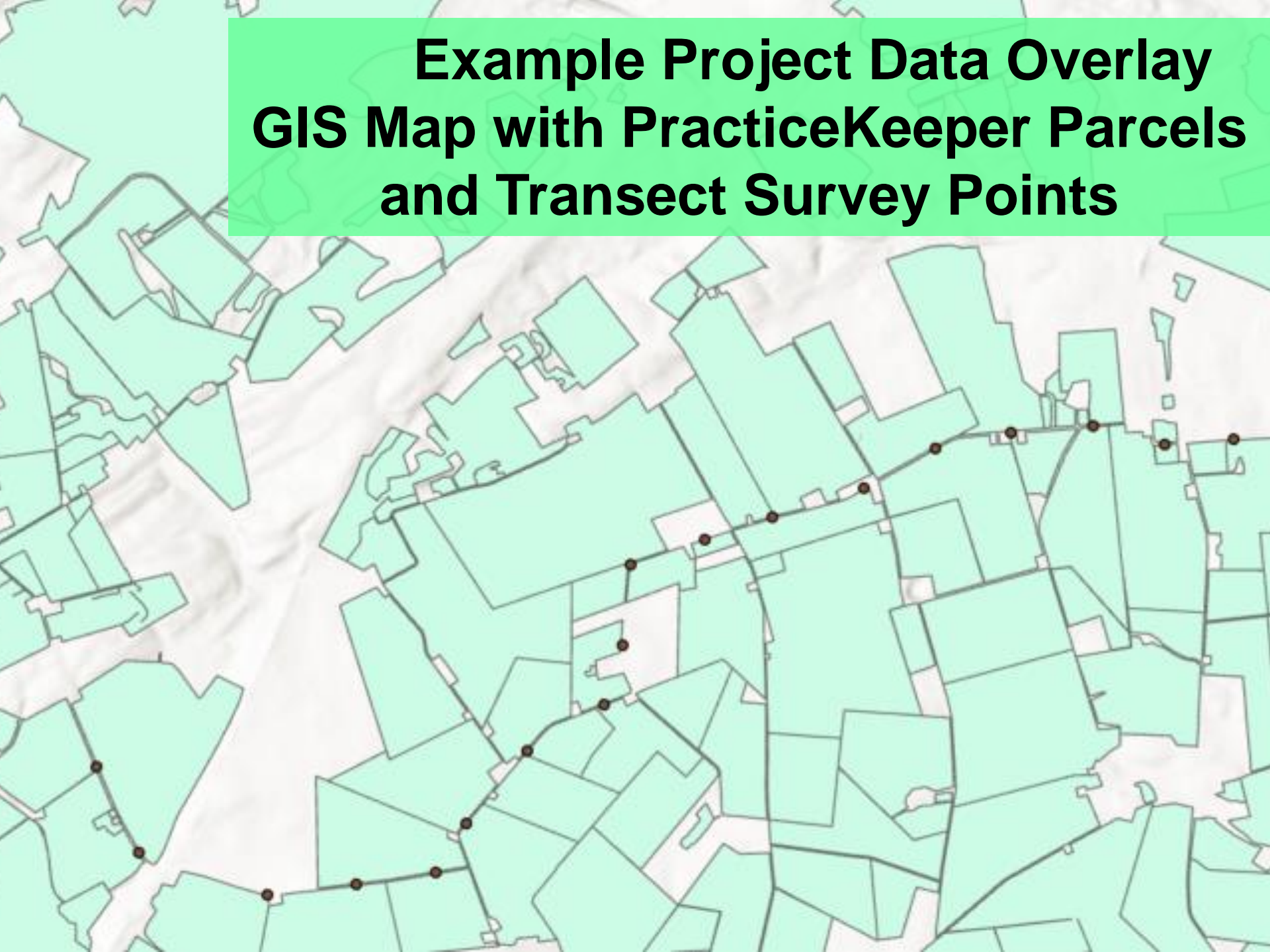
Matt Royer & Aaron Cook – PSU

Ted Tessler – PADEP

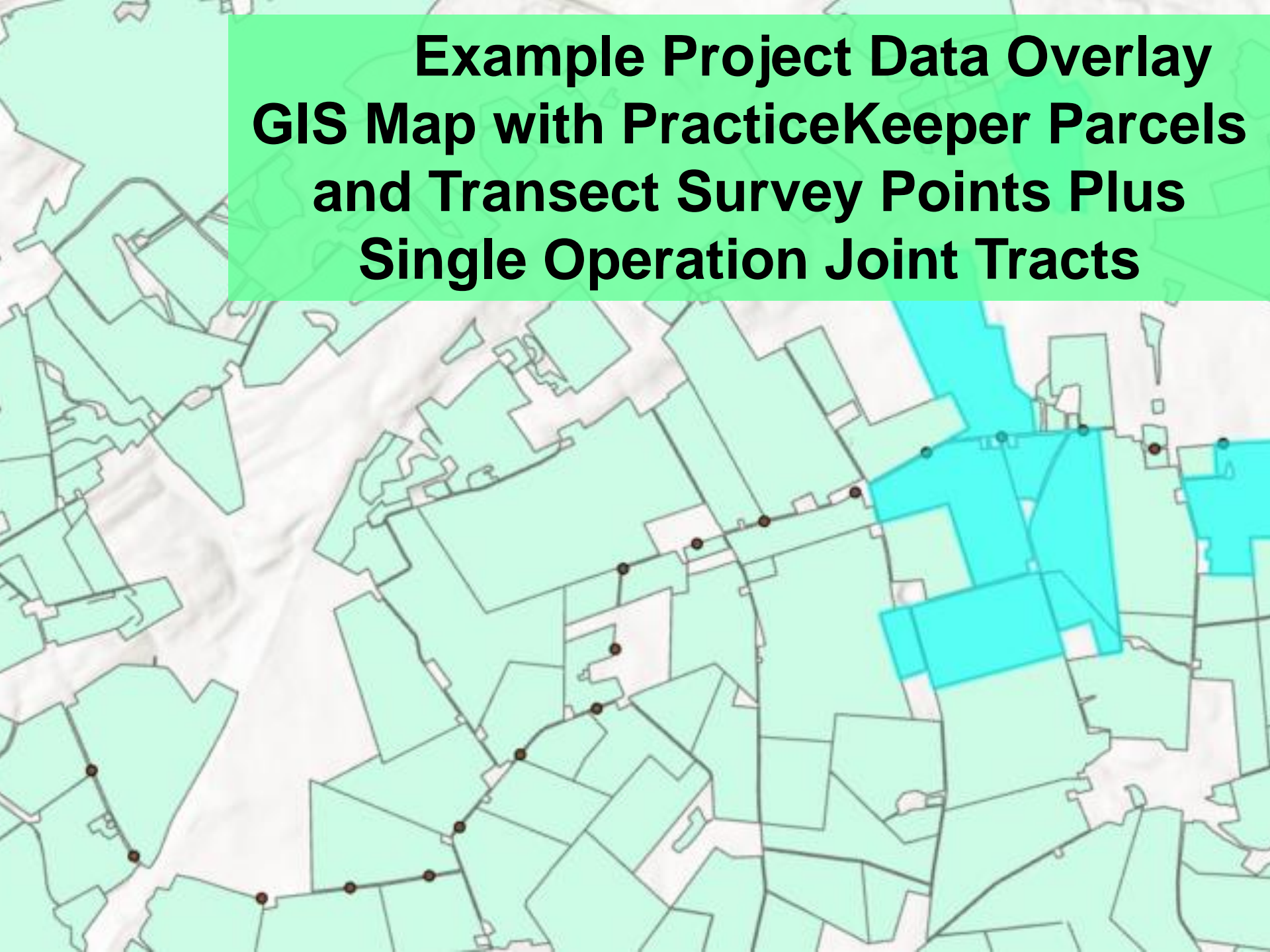
Susan Richards – Capital RC&D

Mark Dubin – UME/CBPO

Example Project Data Overlay GIS Map with PracticeKeeper Parcels and Transect Survey Points



Example Project Data Overlay GIS Map with PracticeKeeper Parcels and Transect Survey Points Plus Single Operation Joint Tracts



A scenic view of a farm with a pond, barns, and a house, with text overlay. The image shows a peaceful rural landscape. In the foreground, there is a grassy bank with some reeds and lily pads near a calm pond. The pond reflects the sky and the buildings. In the middle ground, there are several white farm buildings, including a large barn and a silo. A two-story white house is visible on a slight rise in the background. The sky is blue with some light clouds. The overall scene is bright and clear.

**More Information Coming for
September AgWG Meeting**