

Phase 7 Watershed and Tidal Water Model Boundaries

Modeling Workgroup Quarterly Review

July 12, 2022

Andy Fitch - USGS VA-WV WSC / Chesapeake Bay Program

Previous Actions and Decisions

- The decision was made to use the NOAA 0' (Mean Higher High Water) Sea Level Rise dataset.
- In low-lying, flat areas, the MHHW shoreline covers many wetlands and some areas that are clearly not water, due to the accuracy limitations of the underlying elevation data.
- The CBP GIS Team recommended addressing this issue with the 2017 land use data.

MHHW shoreline in Blackwater NWR



Land Use Issue

- Some docks were classified as wetlands, resulting in small, incorrect peninsulas and islands
- Due to this issue, the GIS Team decided against using the land use to modify the shoreline

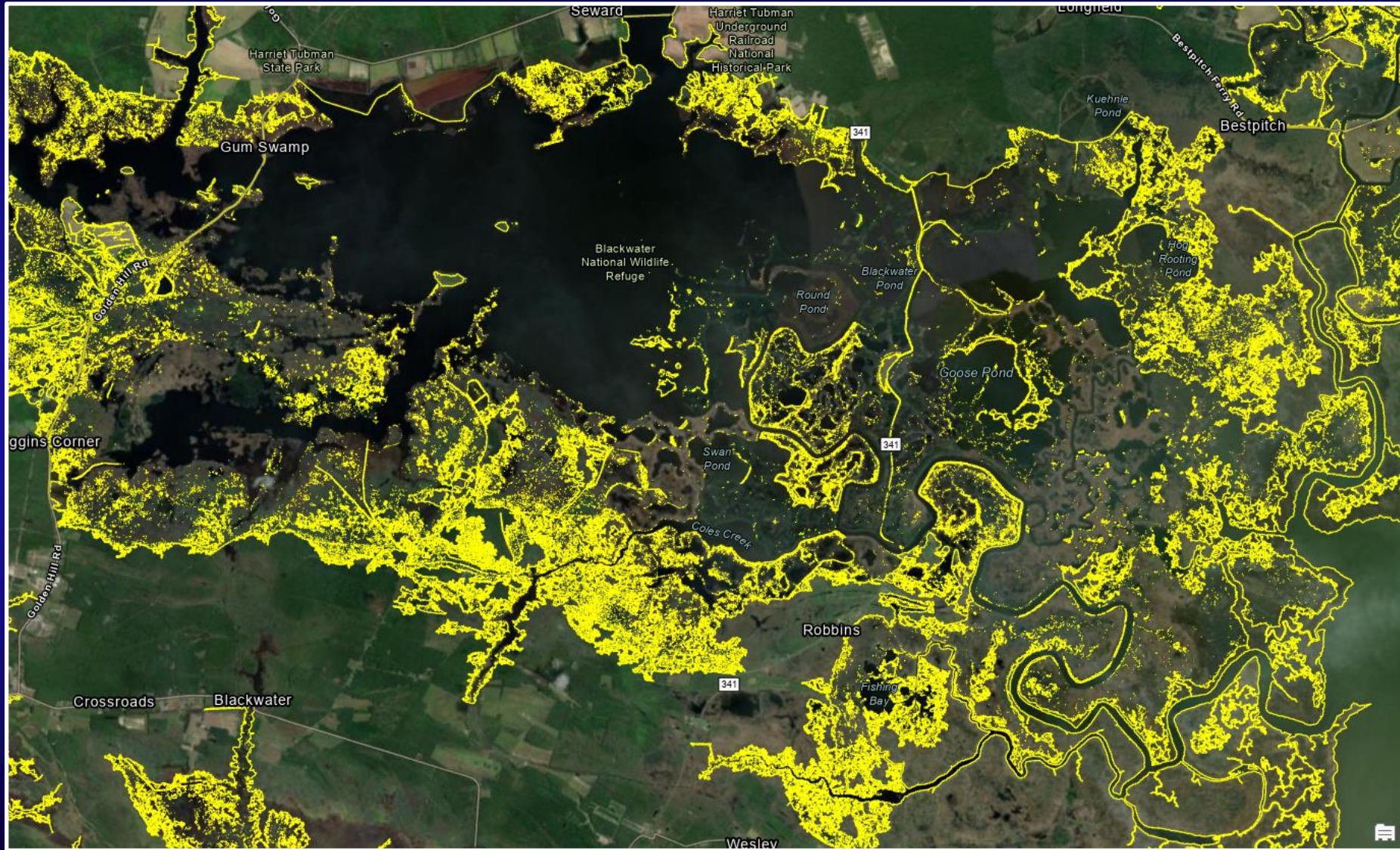


VIMS Shoreline

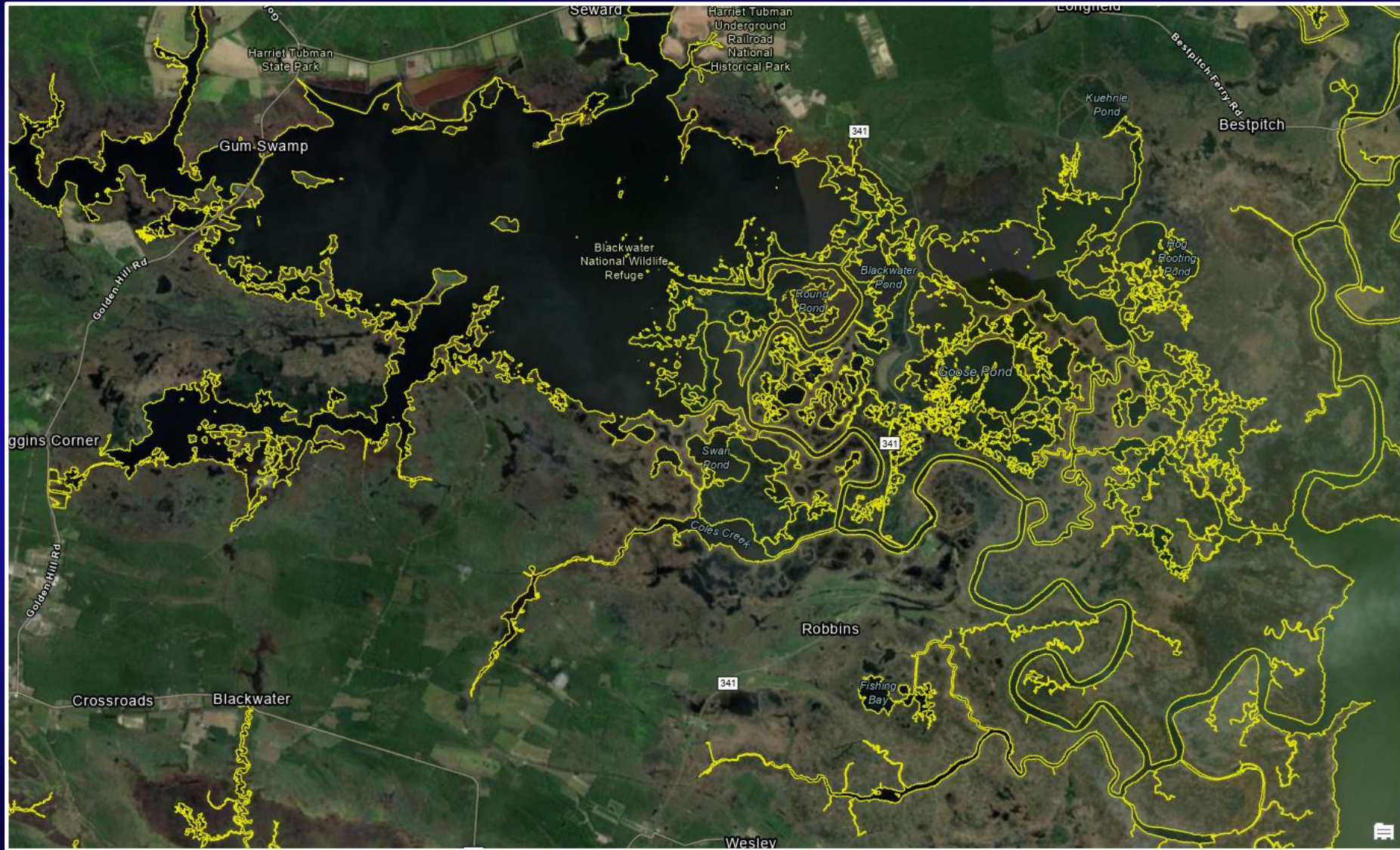
- Developed a shoreline layer from data recently acquired from VIMS
- Required relatively few modifications to align with our needs
- VIMS will provide future updates



NOAA MHHW Shoreline in Blackwater area



Modified NOAA MHHW Shoreline in Blackwater area



Contact

Andy Fitch (afitch@chesapeakebay.net)