



Stream Restoration Forum: A Contractor's Perspective

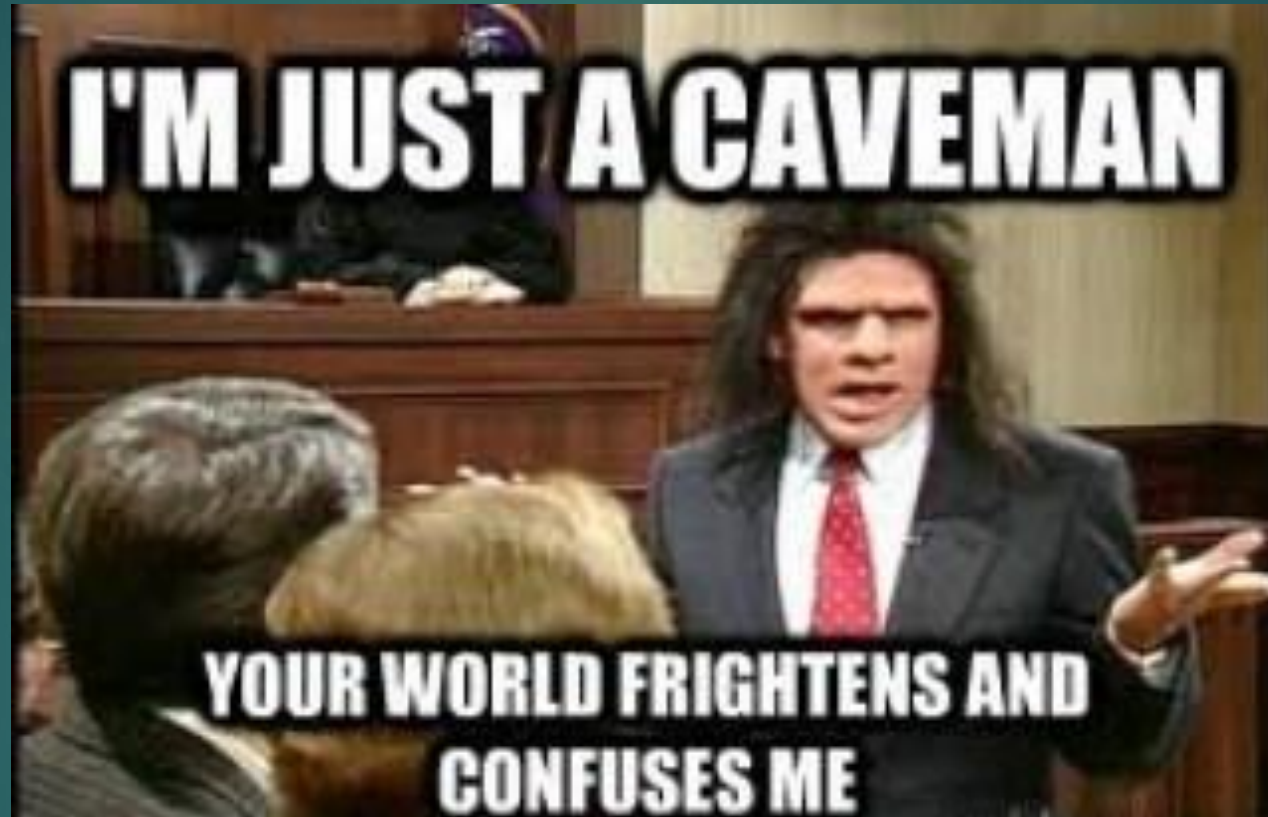
LIAM O'MEARA
PRESIDENT
EQR, LLC

Points of discussion:

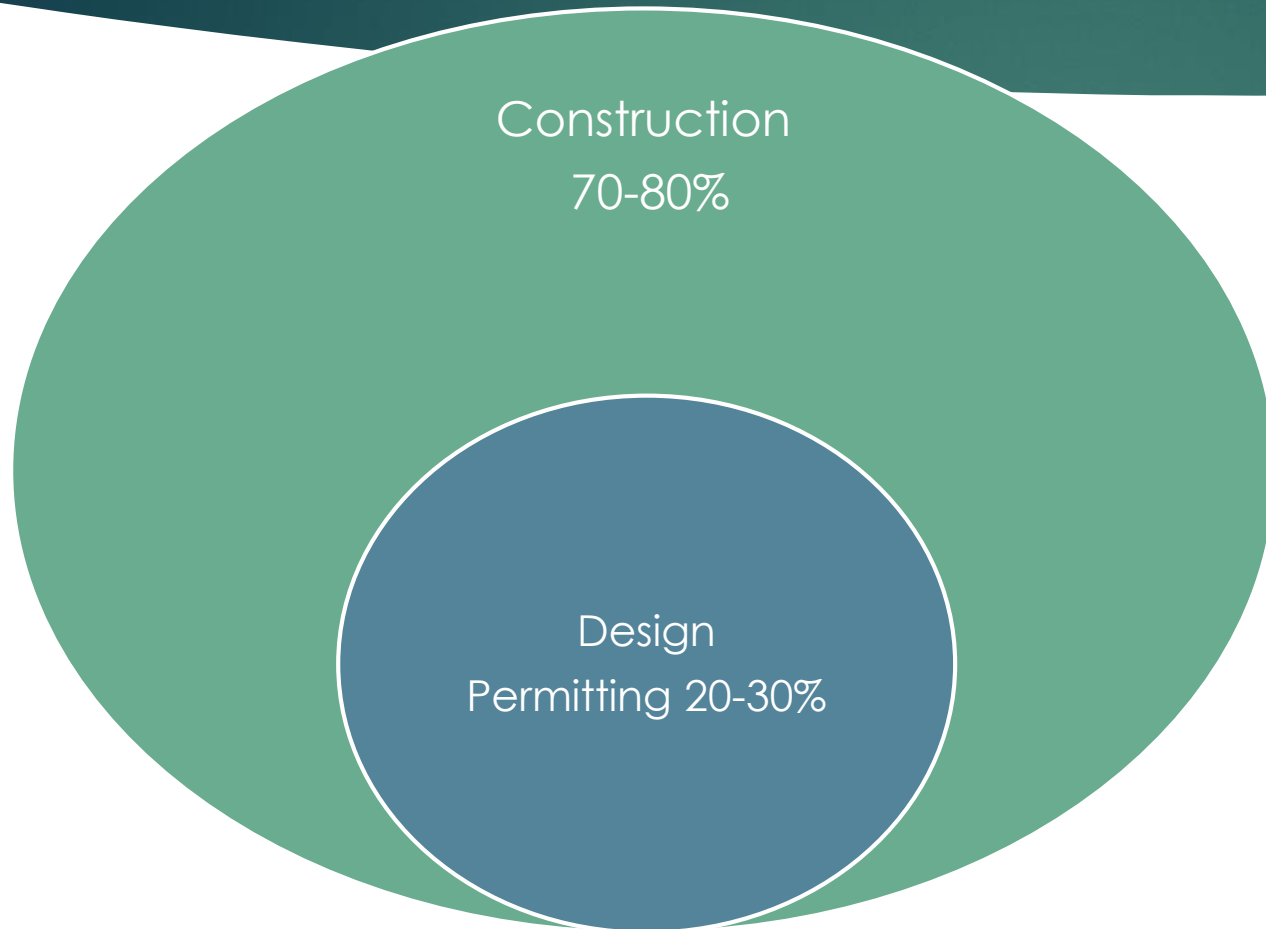
- ▶ Why do you care what I think?
- ▶ Key cost drivers
- ▶ Incentives for project siting relevant to construction
- ▶ Inspection and verification relevant to construction



Why do you care what I think?



Typical Stream Restoration Costs:

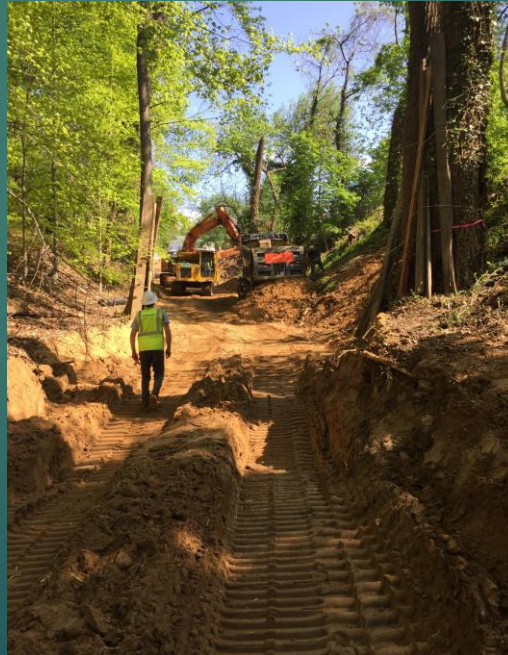


Key “Non-stream” Cost Drivers:

- Access, access, access!
- Off-channel Earthwork
- Stockpile Areas
- Materials- i.e. ROCK

Cost per credit disincentives:

- Discourages complexity
- Discourages urban streams
- Discourages projects with heavy earthwork



Cost per credit incentives:

- Favors the “barely permittable” stream
- Favors rural over urban
- Favors projects with no heavy earthwork



Project verification:

- Ease up on grade tolerances!
- Soil composition and compaction
- More feedback to the contractor as to actual ecological benefits.
- Let us know what is working and what is not.





Questions?

