

CBP Management Board Update – February 14, 2019



Land Use Methods & Metrics Development Outcome

*Peter Claggett, USGS
LUWG Coordinator*

Through the Chesapeake Bay Watershed Agreement, the Chesapeake Bay Program has committed to...



- 1. Measure rate of farmland, forest and wetland conversion, and the extent and rate of change in impervious surface coverage.*
- 2. Quantify the potential impacts of land conversion to water quality, healthy watersheds and communities.*
- 3. Launch a public awareness campaign to share this information with citizens, local governments, elected officials and stakeholders.*



What We Want



Photos: Will Parson

To have Management Board:

1. Delegate updating of jurisdiction-specific datasets to the jurisdictions (e.g., MS4s, protected lands, sewer service areas, and zoning). This will help free-up resources to work on this outcome.
2. Adjust the outcome language to extend the completion date to December 2021.

MS4 progress since November

- Discussed MS4 mapping issues with EPA Region 3 GIS Team Leader.
- Need to request assistance from Region 3 MS4 Lead, Elizabeth Ottinger.

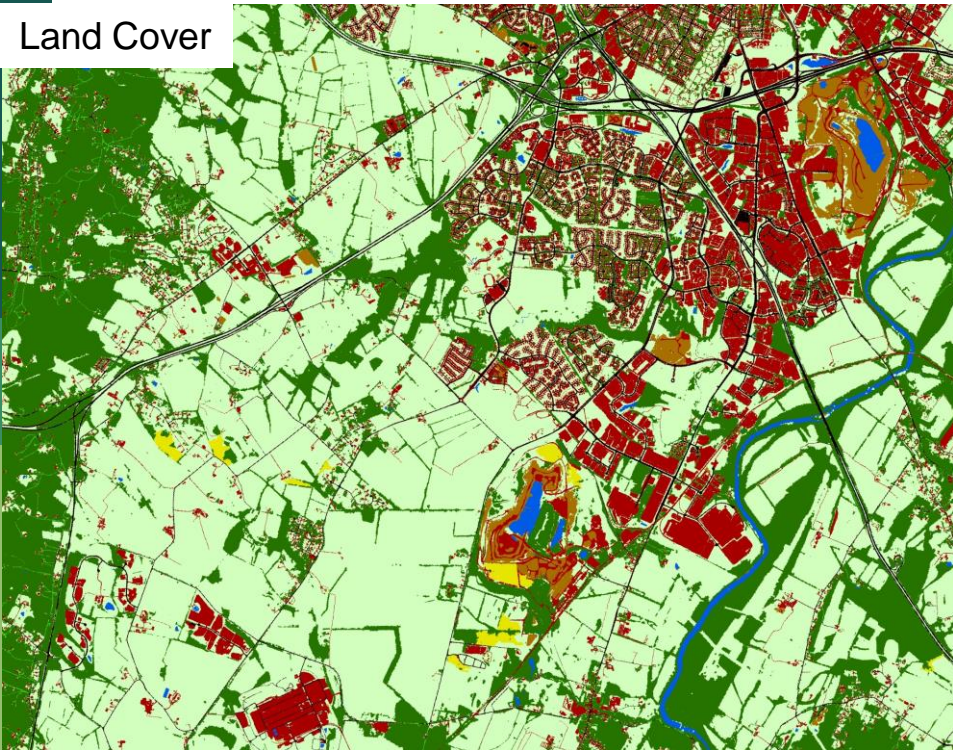
Extension of Deadline to 2021

- Why was it not completed by 2016?

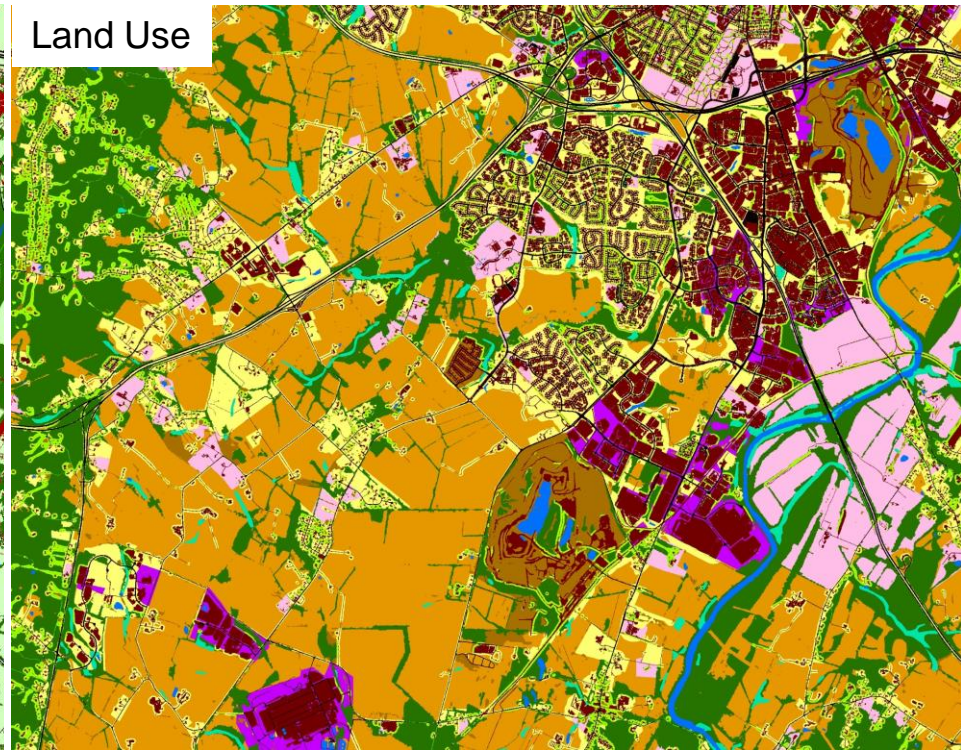


Phase 6 Land Use and Land Policy BMPs

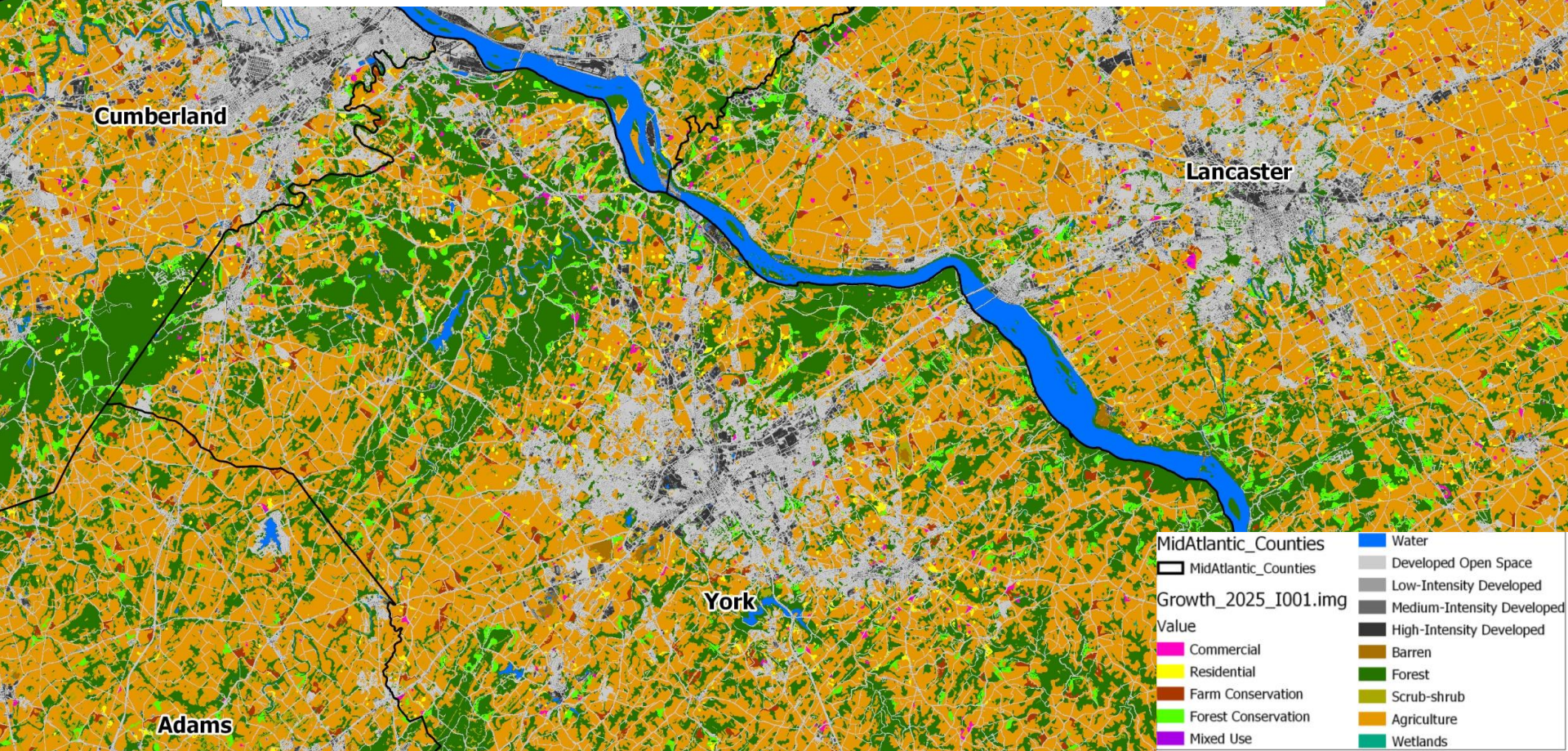
Land Cover



Land Use



Year 2025 Results: Custom Scenario (with land protection)



Extension of Deadline to 2021

- Why was it not completed by 2016?
- OMG! Why is it now going to take 5 years, instead of 2.

Extension of Deadline to 2021

- USGS Lead for this Outcome was let go due to budget cuts in 2017.
- 2018 Cooperative Agreement with Chesapeake Conservancy provides opportunity for a new, and improved approach for assessing land change.

Extension of Deadline to 2021

Product schedule:

- Summer 2019: Annual “hot spot” change from 1985 – 2017
Analysis of complementary data from FIA, NRCS,
and USGS-NLCD
Begin assessment of impacts
- Summer 2020: High-res change from 2013 – 2017
Initiate public awareness campaign
- Summer 2021: “Hot spot” change from 2017 – 2019
Complete assessment of impacts
- Summer 2023: High-res change from 2017 - 2021