



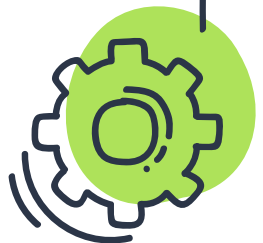
UMBC ICARE

BROADENING CONNECTIONS OF CBP SCIENCE NEEDS WITH ACADEMIA

BRECK SULLIVAN, STAR COORDINATOR
STAR MEETING 11/15/21

ICARE

- x Interdisciplinary Consortium for Applied Research in the Environment
- x Master's program committed to increasing the diversity of the environmental workforce
- x Committed to incorporating and engaging the local community
- x Environmental research in and around the Baltimore Harbor



THE RESEARCH TEAM

- X UMBC Faculty member
- X A non-academic scientist from a government agency, non-profit, or industry
- X One or more community members with a stake in the research

UMBC Faculty is interested in working with CBP members and addressing our science needs.



RESEARCH INTERESTS

Policy

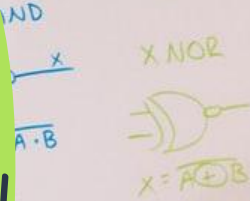
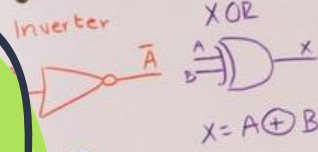
Conservation Biology

Environmental
Engineering

Socio-environmental
systems

Urban Ecology &
Hydrology

④ Digital Logic



⑥



INTERESTED SCIENCE NEEDS

Outcome	Science Need	Interested Faculty
Forage Fish/Fish Habitat	Needed to determine local impacts of climate change on coastal fisheries and how management can respond.	Tamra Mendelson
Toxics Policy/Prevention	Improved understanding of PCB sources and fate in the environment to better inform PCB mitigation	Kevin Sowers
Diversity	Identify measures of success toward outcome beyond diversity indicator	Dawn Biehler



PARTNER MENTOR REQUIREMENTS

- X Meet with the trainee (at least) monthly
- X Prefer mentor with PhD
- X Participate in two concept-mapping exercises
- X Participate in two virtual mentor training modules

Help strengthen the environmental pipeline while supporting your science need.



IMPORTANT DATES

December 2021

Student applications are due January 1, 2022. ICARE would like to have a partner research example before applications are due.

Fall 2022

Need to confirm mentors by Fall 2022.



WANT TO BE A MENTOR?

Any questions?

If interested, please
contact me at:

X bsullivan@chesapeakebay.net

