

2017 Land Use Review for CAST-21

Peter R. Claggett¹, Labeeb Ahmed², Jacob Czawlytko³, Sean MacFaden⁴, Jarlath O'Neil-Dunne⁴, and Rachel Soobitsky³

¹ Presenting Author, Lower Mississippi-Gulf Water Science Center, U.S. Geological Survey, Annapolis, MD 21403

² Attain LLC, Annapolis, MD 21403

³ Chesapeake Conservancy, Annapolis, MD 21403

⁴ University of Vermont Spatial Analysis Laboratory, Burlington, VT 05405

Water Quality Goal Implementation Team (WQGIT) Meeting
March 22, 2021

Chesapeake Bay Program Land Use Classification (64 classes)

1. Water (8)

1.1 Lentic

1.1.1 Estuary (tidal)

1.1.2 Lakes & Ponds

1.2 Lotic

1.2.1 Streams

1.2.1.1 Open Channel

1.2.1.2 TC over Channel

1.2.1.3 Culverted/ Buried Channel

1.2.2 Ditches

1.2.2.1 Open Ditch

1.2.2.2 TC over Ditch

1.2.2.3 Culverted/ Buried Ditch

2. Developed (13)

2.1 Impervious

2.1.1 Roads

2.1.2 Structures

2.1.3 Other Impervious (Parking lots, driveways)

2.2 Pervious

2.2.1 Turf Grass

2.2.2 Bare Developed

2.2.3 Suspended Succession (rights-of-way)

2.2.3.1 Barren

2.2.3.2 Herbaceous

2.2.3.3 Scrub-shrub

2.3 Tree Canopy (TC)

2.3.1 TC over Roads

2.3.2 TC over Structures

2.3.3 TC over Other Impervious

2.3.4 TC over Turf Grass

2.3.5 TC in Agriculture

3. Forest (6)

3.1 Forest (≥ 1 acre, 240-ft width)

3.2 Harvested Forest (≤ 3 years)

3.2.1 Barren

3.2.2 Herbaceous

3.3 Natural Succession (> 3 years)

3.3.1 Barren

3.3.2 Herbaceous

3.3.3 Scrub-shrub

4. Production (13)

4.1 Agriculture

4.1.1 Cropland

4.1.1.1 Barren

4.1.1.2 Herbaceous

4.1.2 Pasture

4.1.2.1 Barren

4.1.2.2 Herbaceous

4.1.3 Orchard/vineyard

4.1.3.1 Barren

4.1.3.2 Herbaceous

4.1.3.3 Scrub-shrub

4.1.4 Idle/Fallow

4.1.4.1 Barren

4.1.4.2 Herbaceous

4.1.4.3 Scrub-shrub

4.2 Solar fields

4.2.1 Barren

4.2.2 Herbaceous

4.2.3 Scrub-shrub

4.2.4 Impervious

4.3 Extractive (active mines)

4.3.1 Barren

4.3.2 Impervious

5. Wetlands and Water Margins (21)

5.1 Tidal

5.1.1 Barren

5.1.2 Herbaceous

5.1.3 Scrub-shrub

5.1.4 Tree Canopy

5.1.5 Forest

5.2 Non-tidal

5.2.1 Riverine

5.2.1.1 Barren

5.2.1.2 Herbaceous

5.2.1.3 Scrub-shrub

5.2.1.4 Tree Canopy

5.2.1.5 Forest

5.2.2 Headwater

5.2.2.1 Barren

5.2.2.2 Herbaceous

5.2.2.3 Scrub-shrub

5.2.2.4 Tree Canopy

5.2.2.5 Forest

5.2.3 Terrene / Isolated

5.2.3.1 Barren

5.2.3.2 Herbaceous

5.2.3.3 Scrub-shrub

5.2.3.4 Tree Canopy

5.2.3.5 Forest

5.3 Bare shore

Chesapeake Bay Program Land Use Classification (64 classes)

1. Water (8)

- 1.1 Lentic
 - 1.1.1 Estuary (tidal)
 - 1.1.2 Lakes & Ponds
- 1.2 Lotic
 - 1.2.1 Streams
 - 1.2.1.1 Open Channel
 - 1.2.1.2 Culverted/ Buried Channel
 - 1.2.2 Ditches
 - 1.2.2.1 Open Ditch
 - 1.2.2.2 TC over Ditch
 - 1.2.2.3 Culverted/ Buried Ditch

Wetlands Workgroup
Stream Health Workgroup

3. Forest (6)

- 3.1 Forest (≥ 1 acre, 240-ft width)
- 3.2 Harvested Forest (≤ 3 years)
 - 3.2.1 Barren
- 3.3 Natural Succession (> 3 years)
 - 3.3.1 Barren
 - 3.3.2 Herbaceous
 - 3.3.3 Scrub-shrub

Forestry Workgroup

4. Production (13)

- 4.1 Agriculture
 - 4.1.1 Cropland
 - 4.1.1.1 Barren
 - 4.1.1.2 Herbaceous
 - 4.1.2 Pasture
 - 4.1.2.1 Barren
 - 4.1.2.2 Herbaceous
 - 4.1.3 Orchard/vineyard
 - 4.1.3.1 Barren
 - 4.1.3.2 Herbaceous
 - 4.1.3.3 Scrub-shrub
 - 4.1.4 Idle/Fallow
 - 4.1.4.1 Barren
 - 4.1.4.2 Herbaceous
 - 4.1.4.3 Scrub-shrub
- 4.2 Solid fields
 - 4.2.1 Barren
 - 4.2.2 Herbaceous
 - 4.2.3 Scrub-shrub
 - 4.2.4 Impervious

Agriculture Workgroup
Federal Facilities Workgroup

Land Use Workgroup
Urban Stormwater Workgroup

4.3 Extractive (active mines)

Land Use Workgroup
4.3.2 Impervious

5. Wetlands and Water Margins (21)

- 5.1 Tidal
 - 5.1.1 Barren
 - 5.1.2 Herbaceous
 - 5.1.3 Scrub-shrub
 - 5.1.4 Tree Canopy
 - 5.1.5 Forest
- 5.2 Non-tidal
 - 5.2.1 Riverine
 - 5.2.1.1 Barren
 - 5.2.1.2 Herbaceous
 - 5.2.1.3 Scrub-shrub
 - 5.2.1.4 Tree Canopy
 - 5.2.1.5 Forest
 - 5.2.2 Headwater
 - 5.2.2.1 Barren
 - 5.2.2.2 Herbaceous
 - 5.2.2.3 Scrub-shrub
 - 5.2.2.4 Tree Canopy
 - 5.2.2.5 Forest
 - 5.2.3 Terrene / Isolated
 - 5.2.3.1 Barren
 - 5.2.3.2 Herbaceous
 - 5.2.3.3 Scrub-shrub
 - 5.2.3.4 Tree Canopy
 - 5.2.3.5 Forest
- 5.3 Bare shore

Wetlands Workgroup

2. Developed (13)

- 2.1 Impervious
 - 2.1.1 Roads
 - 2.1.2 Structures
 - 2.1.3 Other Impervious (Parking lots, driveways)
- 2.2 Pervious
 - 2.2.1 Turf Grass
 - 2.2.2 Bare Developed
 - 2.2.2.1 Open (rights-of-way)
 - 2.2.3 Tree Canopy
 - 2.2.3.1 Barren
 - 2.2.3.2 Herbaceous
 - 2.2.3.3 Scrub-shrub
- 2.3 Tree Canopy (TC)
 - 2.3.1 TC over Roads
 - 2.3.2 TC over Structures
 - 2.3.3 TC over Other Impervious
 - 2.3.4 TC over Turf Grass
 - 2.3.5 TC in Agriculture

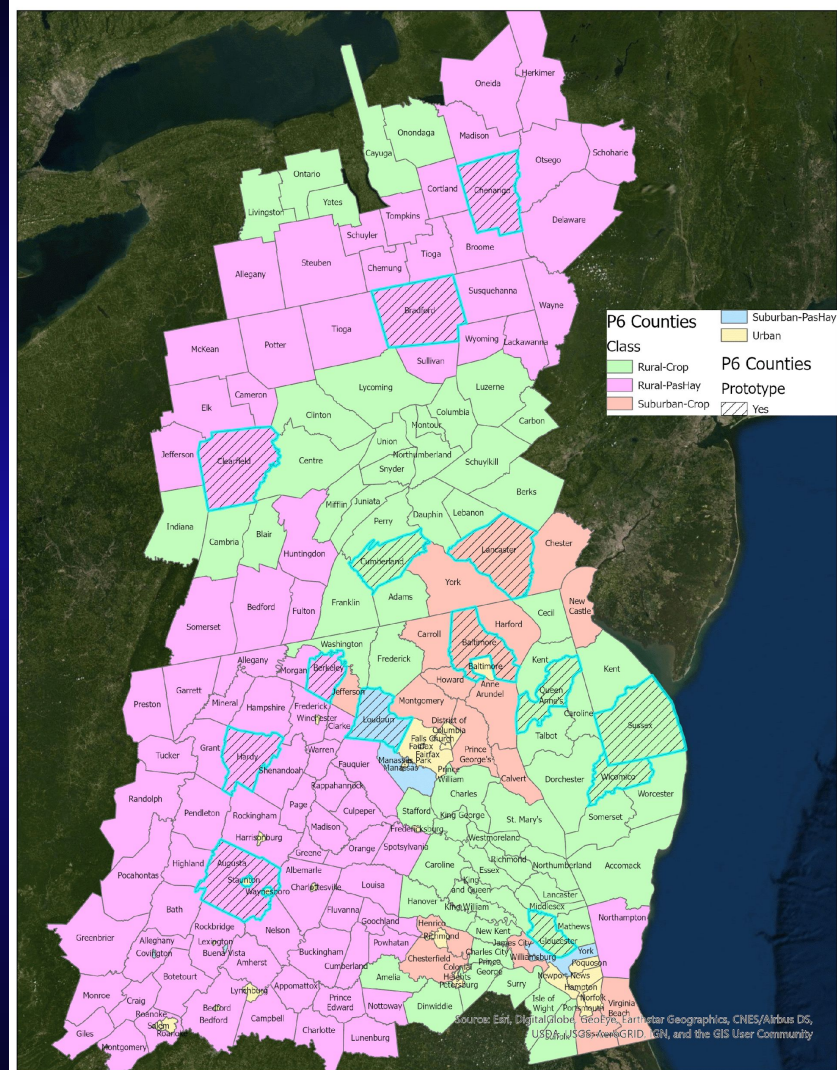
Land Use Workgroup
Urban Stormwater Workgroup

Land Use Production for CAST-21

2017 Land Use Production Schedule		2020			2021											
Order	Task	OCT	NOV	DEC	JAN	FEB	MAR	APR	MAY	JUN	JUL	AUG	SEP	OCT	NOV	DEC
1	Local review of 2017 Land Cover Data	University of Vermont Spatial Analysis Laboratory														
2	Draft Hyper-resolution Hydrography	UMBC, Chesapeake Conservancy Conservation Innovation Center (CIC)														
3	Cropland, Pasture, Orchards, and Turf Grass	AGWG		AGWG	AGWG	AGWG	LUWG	AGWG, LUWG	AGWG, LUWG							
4	Suspended Succession, Bare Shore, and Solar Fields	LUWG				LUWG	USWG	USWG, LUWG	LUWG							
5	Tidal & NonTidal Wetlands	WWG		WWG		WWG		WWG, LUWG	WWG, LUWG							
6	Forests, Tree Canopy, Timber Harvests, and Natural Succession			FWG		FWG		FWG, LUWG	FWG, LUWG							
7	Bare Construction, P6 Roll-up Decision Rules, FedFac Land Uses				LUWG		USWG, FedFac	LUWG	LUWG							
8	Prototype Land Use in 14 counties	Chesapeake Conservancy (CIC)														
9	Approve 2017 LU Mapping and P6 Roll-up Methods (14 counties)								LUWG, WQGIT							
10	Complete 2017 Land Use Dataset (all 206 counties)						CIC									
11	Revise 2013 Land Use (to match 2017 for all counties)						CIC		LUWG	CIC						
12	Update MS4s, Sewer, Zoning, and Population Projections						CBP Land Data Team									
13	Revise Agricultural Forecast Methodology	AGWG					AGWG		AGWG							
14	Update Land Policy BMPs (future LULC scenarios)										LUWG					
15	Update 2013, 2017, and 2025 data for CAST-21										LUWG	WQGIT				
16	Public release- with streams, potential wetlands, minor fixes													WWG	LUWG	WQGIT

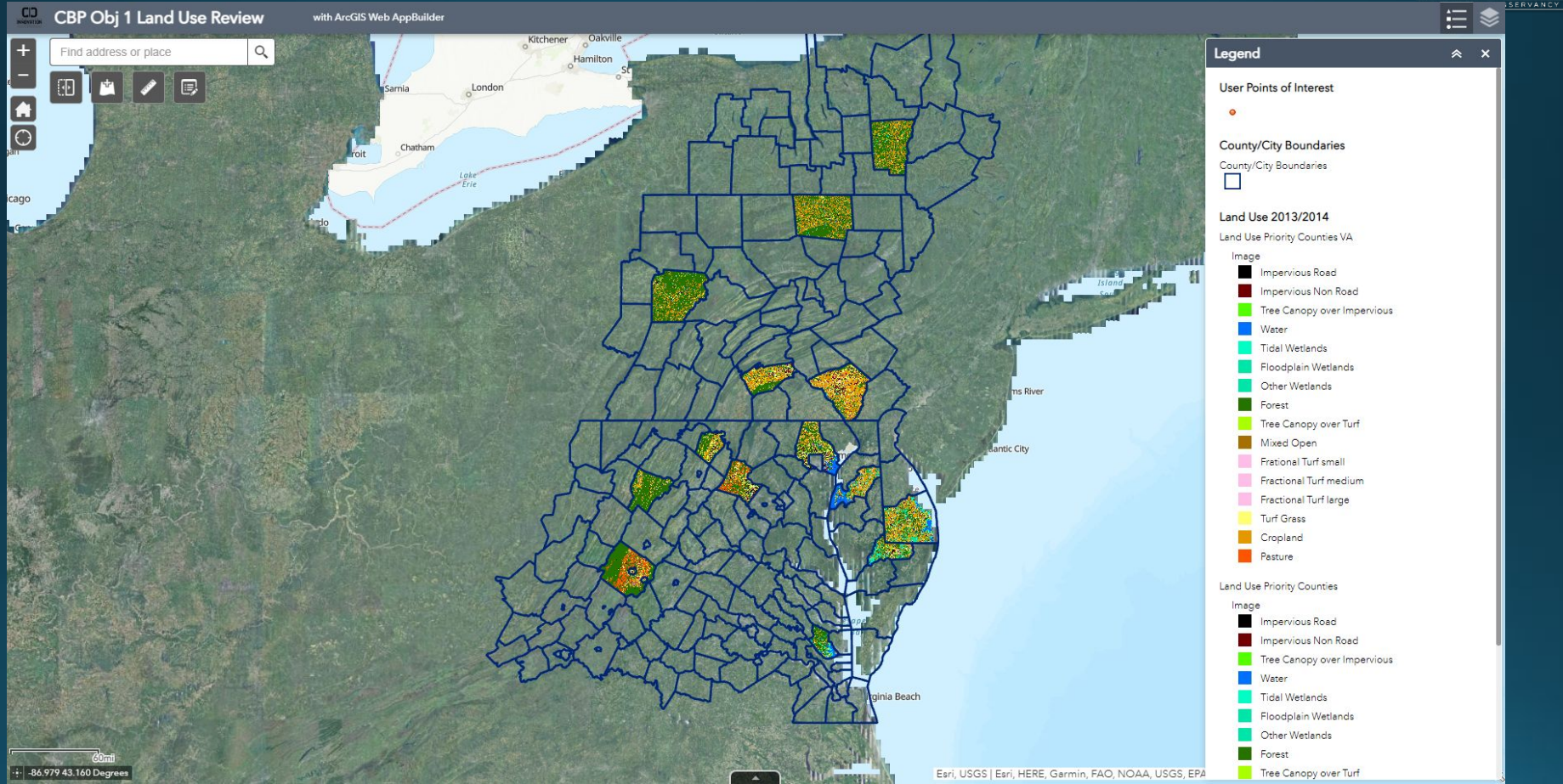
Fourteen Counties Selected to Prototype Development of the 2017 High-res Land Use Data

FIPS	CNTY_NAME	P_Crop	P_Dev	Class
10005	SUSSEX	97.4%	18.8%	Rural-Crop
24005	BALTIMORE	66.7%	38.6%	Suburban-Crop
24035	QUEEN ANNES	96.3%	14.2%	Rural-Crop
24045	WICOMICO	94.5%	20.6%	Rural-Crop
36017	CHENANGO	28.3%	5.8%	Rural-PasHay
42015	BRADFORD	39.2%	5.7%	Rural-PasHay
42033	CLEARFIELD	42.0%	8.1%	Rural-PasHay
42041	CUMBERLAND	65.8%	24.6%	Rural-Crop
42071	LANCASTER	68.2%	29.2%	Suburban-Crop
51015	AUGUSTA	27.1%	9.3%	Rural-PasHay
51073	GLOUCESTER	85.1%	12.6%	Rural-Crop
51107	LOUDOUN	33.1%	27.7%	Suburban-PasHay
54003	BERKELEY	33.1%	23.8%	Rural-PasHay
54031	HARDY	22.2%	6.4%	Rural-PasHay



Land Use Viewer

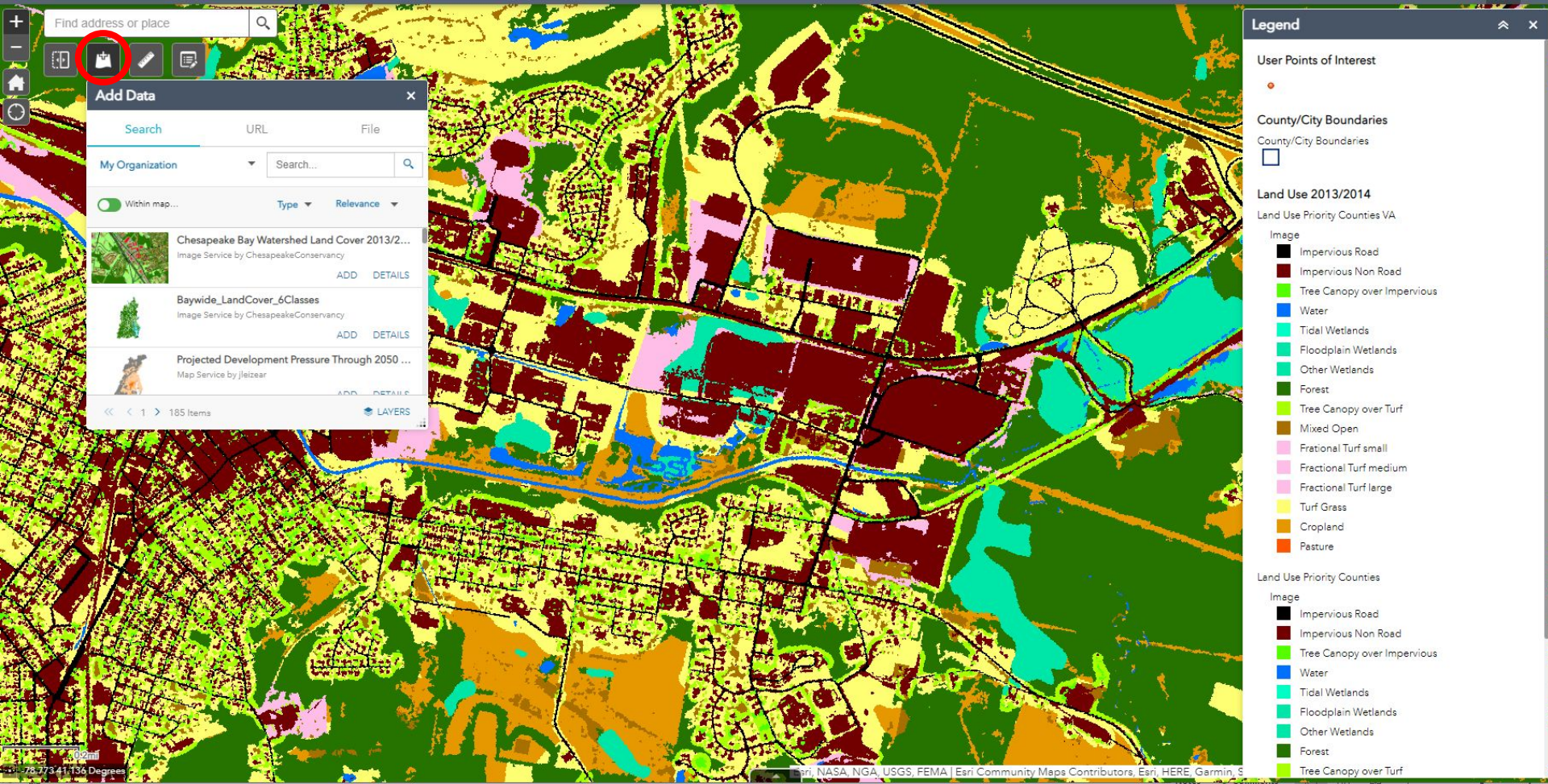
When all 14 counties 2017/2018 draft land use is complete, will send out the web viewer link and log-in information.





Legend

- User Points of Interest
 -
- County/City Boundaries
 -
- Land Use 2013/2014
 - Land Use Priority Counties VA
 - Image
 - Impervious Road
 - Impervious Non Road
 - Tree Canopy over Impervious
 - Water
 - Tidal Wetlands
 - Floodplain Wetlands
 - Other Wetlands
 - Forest
 - Tree Canopy over Turf
 - Mixed Open
 - Fractional Turf small
 - Fractional Turf medium
 - Fractional Turf large
 - Turf Grass
 - Cropland
 - Pasture
- Land Use Priority Counties
 - Image
 - Impervious Road
 - Impervious Non Road
 - Tree Canopy over Impervious
 - Water
 - Tidal Wetlands
 - Floodplain Wetlands
 - Other Wetlands
 - Forest
 - Tree Canopy over Turf



Find address or place



Add Data

Search URL File

My Organization Search...

Within map... Type Relevance

- Chesapeake Bay Watershed Land Cover 2013/2...
Image Service by ChesapeakeConservancy
- Baywide_LandCover_6Classes
Image Service by ChesapeakeConservancy
- Projected Development Pressure Through 2050 ...
Map Service by jleizar

<< < 1 > 185 Items LAYERS

Legend

- User Points of Interest
- County/City Boundaries
- Land Use 2013/2014
- Land Use Priority Counties VA
- Impervious Road
- Impervious Non Road
- Tree Canopy over Impervious
- Water
- Tidal Wetlands
- Floodplain Wetlands
- Other Wetlands
- Forest
- Tree Canopy over Turf
- Mixed Open
- Fractional Turf small
- Fractional Turf large
- Turf Grass
- Cropland
- Pasture
- Land Use Priority Counties
- Impervious Road
- Impervious Non Road
- Tree Canopy over Impervious
- Water
- Tidal Wetlands
- Floodplain Wetlands
- Other Wetlands
- Forest
- Tree Canopy over Turf

US

ES



science for a changing world