



# Proposed Reductions in Turf Grass

Peter Claggett, Coordinator, Land Use Workgroup

CBP WQGIT Call  
August 28, 2017

## **Problem:**

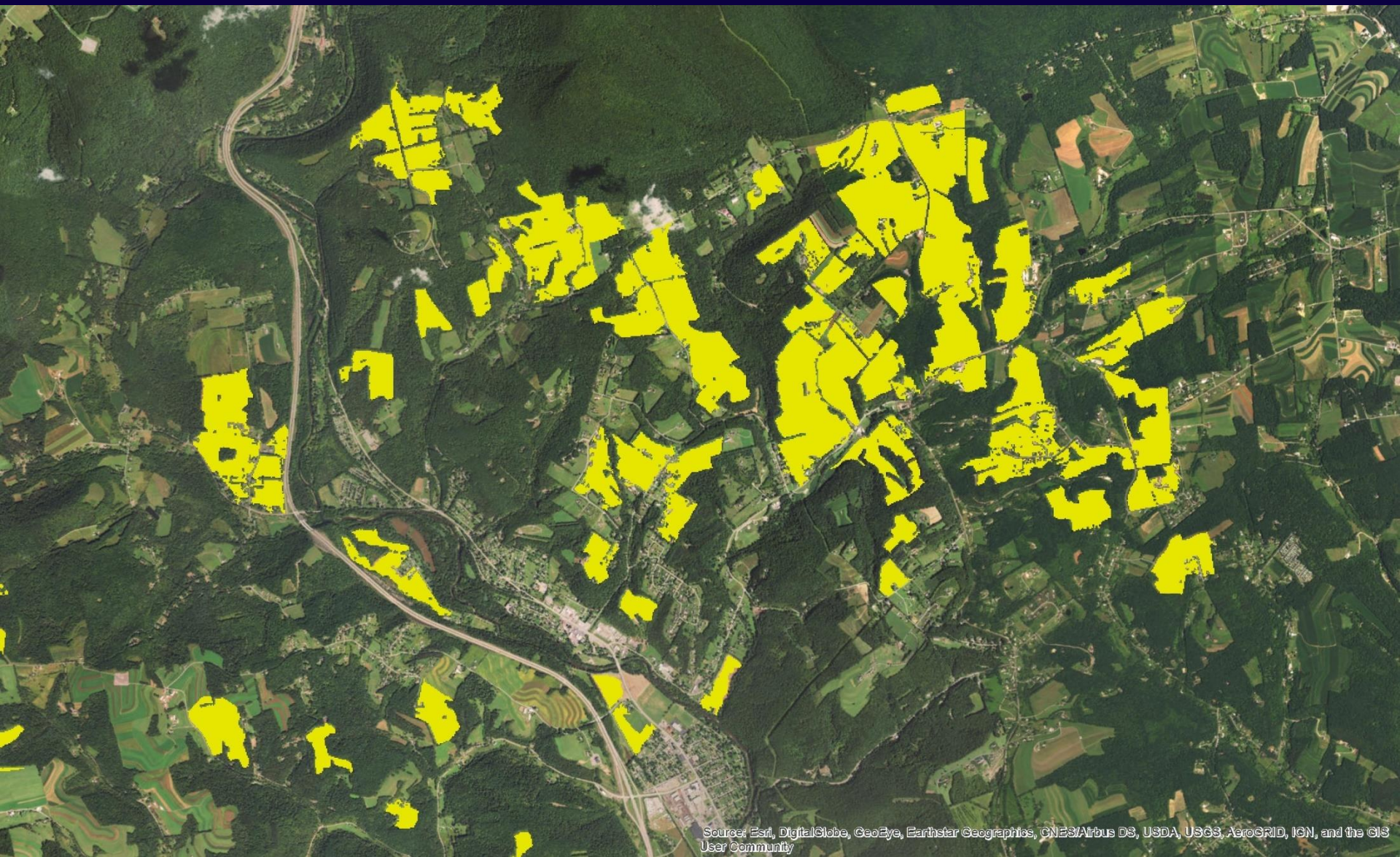
**Turf Grass appears to be over-classified in areas that appear to be cropland, pasture, or mixed open.**

## **Causes:**

- 1. Phase 6 land use decision rules on the handling of herbaceous vegetation within federal lands, parks, and residential/commercial land uses.**
- 2. Over-generalized local land use classifications.**



# Over-classification of Turf Grass: PA example



Sources: Esri, DigitalGlobe, GeoEye, Earthstar Geographics, CNES/Airbus DS, USDA, USGS, AeroGRID, IGN, and the GIS User Community



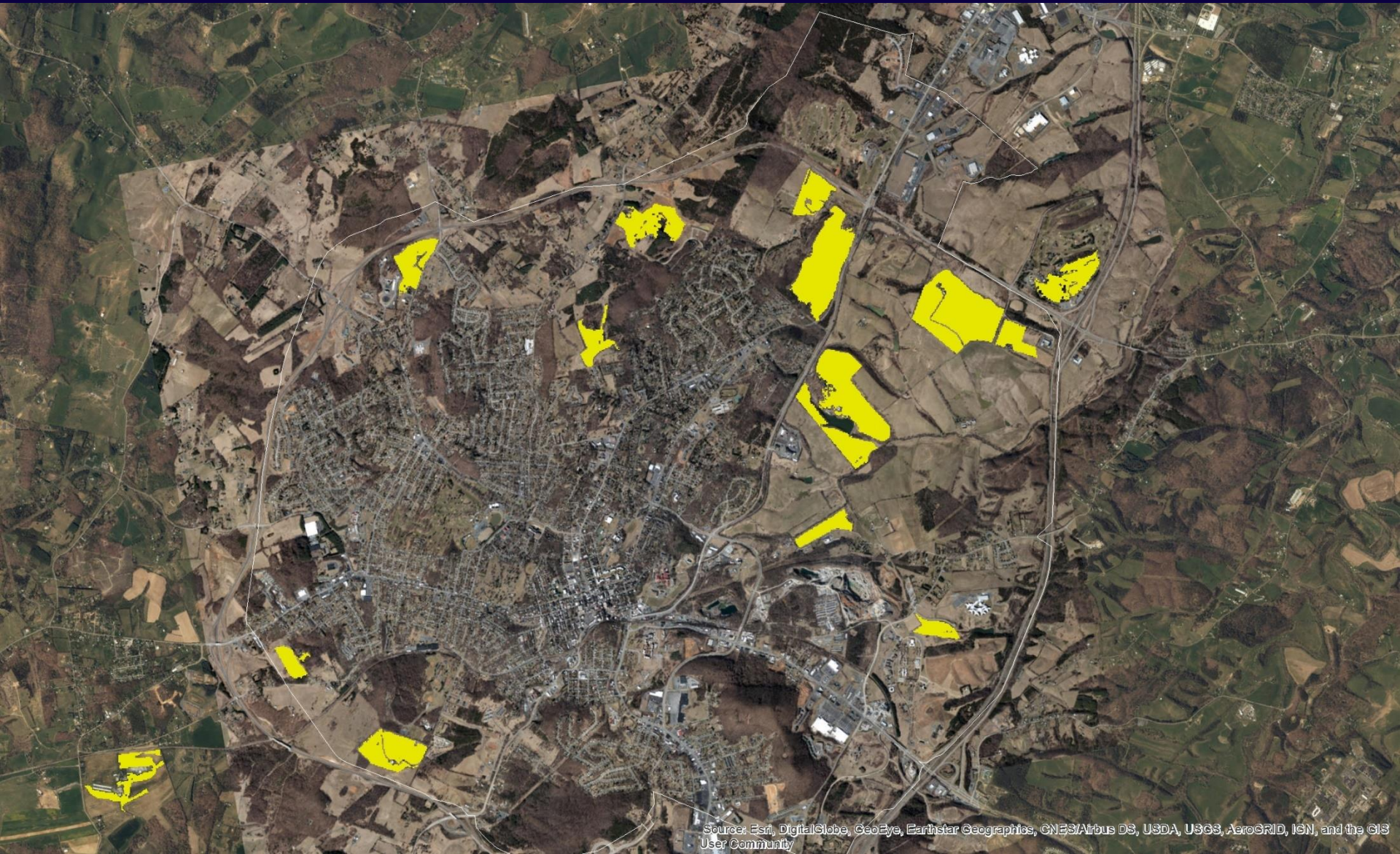
# Over-classification of Turf Grass: VA example



Source: Esri, DigitalGlobe, GeoEye, Earthstar Geographics, CNES/Airbus DS, USDA, USGS, AeroGRID, IGN, and the GIS User Community



# Over-classification of Turf Grass: Staunton, VA



Source: Esri, DigitalGlobe, GeoEye, Earthstar Geographics, CNES/Airbus DS, USDA, USGS, AeroGRID, IGN, and the GIS User Community



# Solutions:

## Old Rules

1. Herbaceous lands within developed land uses = turf grass.

## New Rules

1. Herbaceous lands (currently classed as 70% or 100% turf grass) in patches greater than 20-25 acres within developed land uses, Census Urbanized Areas (excluding golf course, airports, etc.), and with NASS Cropland Data Layer values = cropland and/or pasture; else = mixed open.
  - Outside Census Urbanized Areas, acreage threshold applies to herbaceous lands in patches greater than 5-7 acres.

Notes:

Affected Acres ~ TBD (likely less than 5% of turf grass in Bay watershed)

# Solutions:

## Old Rules

2. Herbaceous lands within large federal lands and parks = 30% turf grass; 60% mixed open; 5% crop; 5% pasture.

## New Rules

2. Herbaceous lands within large federal lands and parks = 5% turf grass; 85% mixed open; 5% crop; 5% pasture.

Notes:

Affected Acres ~ TBD (likely less than 5% of turf grass in Bay watershed)

“Large” federal lands and parks are >1000 acres.

These changes do not apply to entries made via the Federal Facility Editor Tool.

# Solutions:

## Old Rules

3. Herbaceous lands within medium federal lands and parks = 50% turf grass; 50% mixed open.

## New Rules

3. Herbaceous lands within large federal lands and parks = 30% turf grass; 70% mixed open.

Notes:

Affected Acres ~ TBD (likely less than 2% of turf grass in Bay watershed)

“Medium” federal lands and parks are  $>10$  and  $\leq 1000$  acres.

These changes do not apply to entries made via the Federal Facility Editor Tool.



# Final notes:

- Total turf grass acreage impacted is relatively small.
- While some commission errors (reclassification of herbaceous lands within large-lot subdivisions as cropland, pasture, or mixed open) will occur, they are small compared to the current over-classification of turf grass.
- Most of the lands classed by WSI as “turf grass” in VA will be unaffected.